

Asia Pacific Region Only

H **PARTS LIST**
BRAKE SYSTEMS & COMPONENTS

LIT NO: 97114-097

DATE: December 2022

REVISION: N

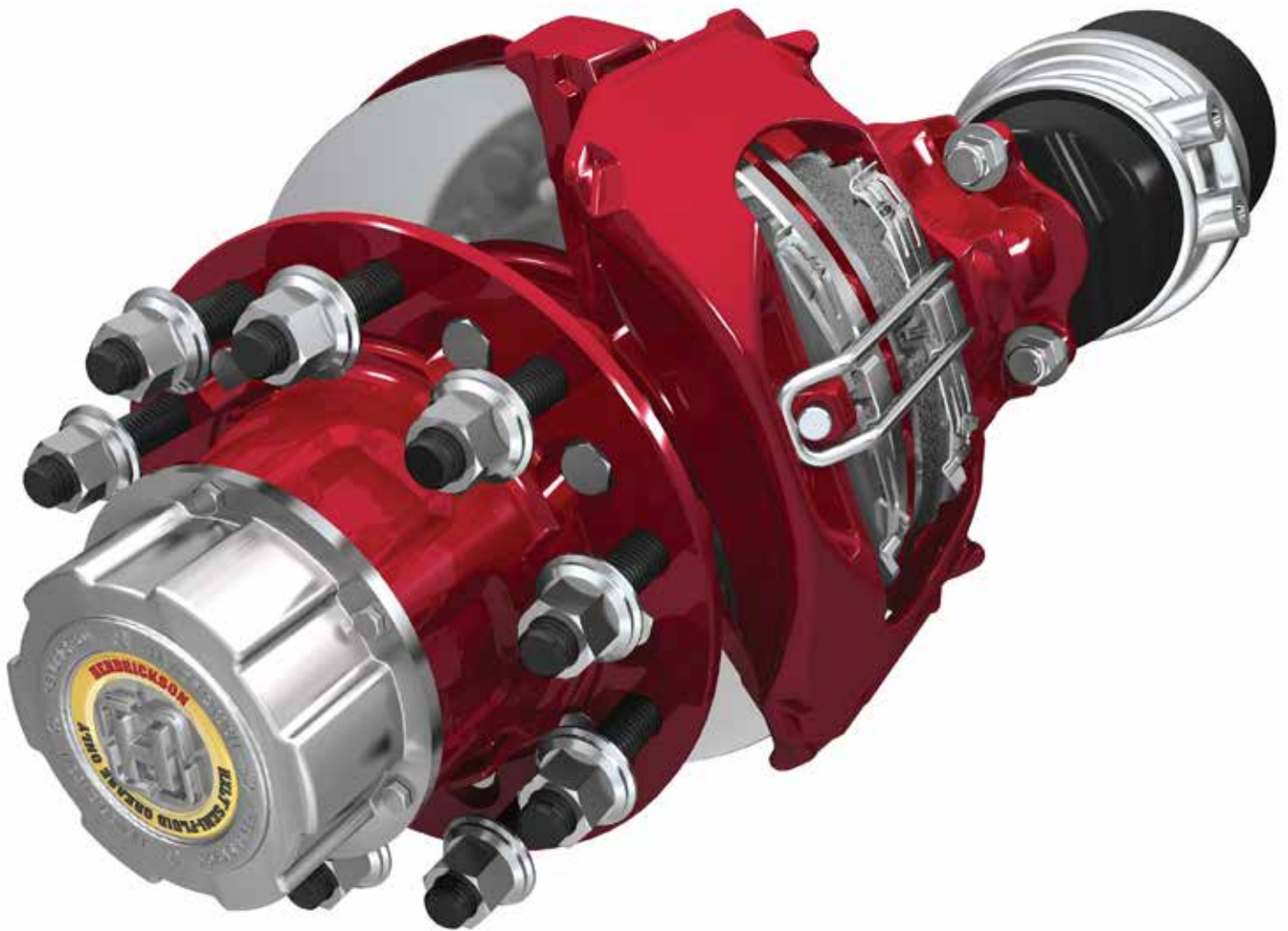




TABLE OF CONTENTS

| | |
|--|----|
| INTRODUCTION | 3 |
| ABBREVIATIONS | 3 |
| DRUM BRAKES | 4 |
| 15" & 16.5" DRUM FOUNDATION BRAKE | 5 |
| HXS™ Brakes..... | 5 |
| P-TYPE DRUM FOUNDATION BRAKE | 7 |
| INTRAAX® ENCLOSED S-CAM, EARLY TYPE (PRE-2000) | 8 |
| INTRAAX® NON-ENCLOSED S-CAM EARLY TYPE (PRE-2000) | 9 |
| INTRAAX® 15" SEVERE DUTY CAM TUBE | 10 |
| INTRAAX® 16.5" SEVERE DUTY CAM TUBE | 11 |
| DRUM BRAKE CHAMBER GENERAL INFORMATION | 12 |
| INTRAAX® Drum Brake Chamber Application..... | 12 |
| DRUM BRAKE CHAMBERS | 12 |
| Common Drum Brake Chambers..... | 13 |
| BRAKE ADJUSTERS | 14 |
| DISC BRAKES | 15 |
| CALLIPER IDENTIFICATION | 15 |
| MAXX22T HDT-415 Calliper..... | 15 |
| Wabco HDT-377 & -430 Calliper..... | 15 |
| Knorr-Bremse SN7 Calliper..... | 15 |
| Knorr-Bremse SB7 Calliper..... | 15 |
| CONMET BRAKE ROTOR IDENTIFICATION | 16 |
| Early Type Parallel Brake Rotor..... | 16 |
| Late Type Offset Brake Rotor..... | 16 |
| TOOWOOMBA IRON HUB ROTOR KIT | 17 |
| WABCO HTD-377™ SYSTEM – 19.5 [CTA-044547 SARN 44547 FB] | 18 |
| WABCO HTD-377™ CALLIPER – 19.5 [CTA-044547 SARN 44547 FB] | 19 |
| MAXX22T HTD-415™ SYSTEM – 22.5 [CTA-047436 SARN 47436 FB] | 20 |
| MAXX22T HTD-415™ CALLIPER – 22.5 [CTA-047436 SARN 47436 FB] | 21 |
| WABCO HTD-430™ SYSTEM – 22.5 [CTA-044548 SARN 44548 FB] | 22 |
| WABCO HTD-430™ CALLIPER – 22.5 [CTA-044548 SARN 44548 FB] | 23 |
| KNORR-BREMSE HTD-430™ SYSTEM – 22.5 [SARN 29348 FB] | 24 |
| KNORR-BREMSE HTD-430™ CALLIPER – 22.5 [SARN 29348 FB] | 25 |
| DISC BRAKE CHAMBERS | 26 |
| ABS TONE RINGS – 430 MM | 27 |
| SPECIAL TOOLS | 29 |

Document Interactivity

The interactive **Table of Contents** allows users to quickly navigate to the appropriate page with a single mouse click. The **INDEX** button at the bottom of each page returns you to the **Table of Contents**. Other links within the document are identified by black underlined text, whereas links to external websites are identified by blue underlined text.



INTRODUCTION

The purpose of this parts list is to document the repair parts, accessories and special tools available for the disc and drum brake systems installed to the Hendrickson INTRAAX® and TRLAXLE® families of axles as follows:

- Knorr-Bremse Disc Brake
- Hendrickson Extended Service™ (HXS™) and conventional drum brake
- HTD-377™ 377 mm and HTD-430™ 430 mm Wabco Disc Brake
- MAXX22T HTD-415™ 415 mm Hendrickson Disc Brake
- P-Type Drum Brake

However, due to their unique nature, S-cams and associated components for CONNEX™ ST and TRLAXLE® loose axles are detailed separately. For more details regarding wheel end components or the aforementioned axles refer to:

- [97114-072](#) TRLAXLE® Loose Axle Parts Bulletin
- [97114-100](#) Wheel End Parts Bulletin
- [97114-127](#) CONNEX™ ST Top Mount Part Bulletin
- [97114-130](#) CONNEX ST Underslung Part Bulletin

ABS PULSE RING NOTE:

ABS pulse rings that are attached to wheel end hubs vary according to hub type and design. Therefore, hub-attached tone rings are listed in the Hendrickson Trailer Wheel End [Parts List 97114-100](#), along with other wheel end components.

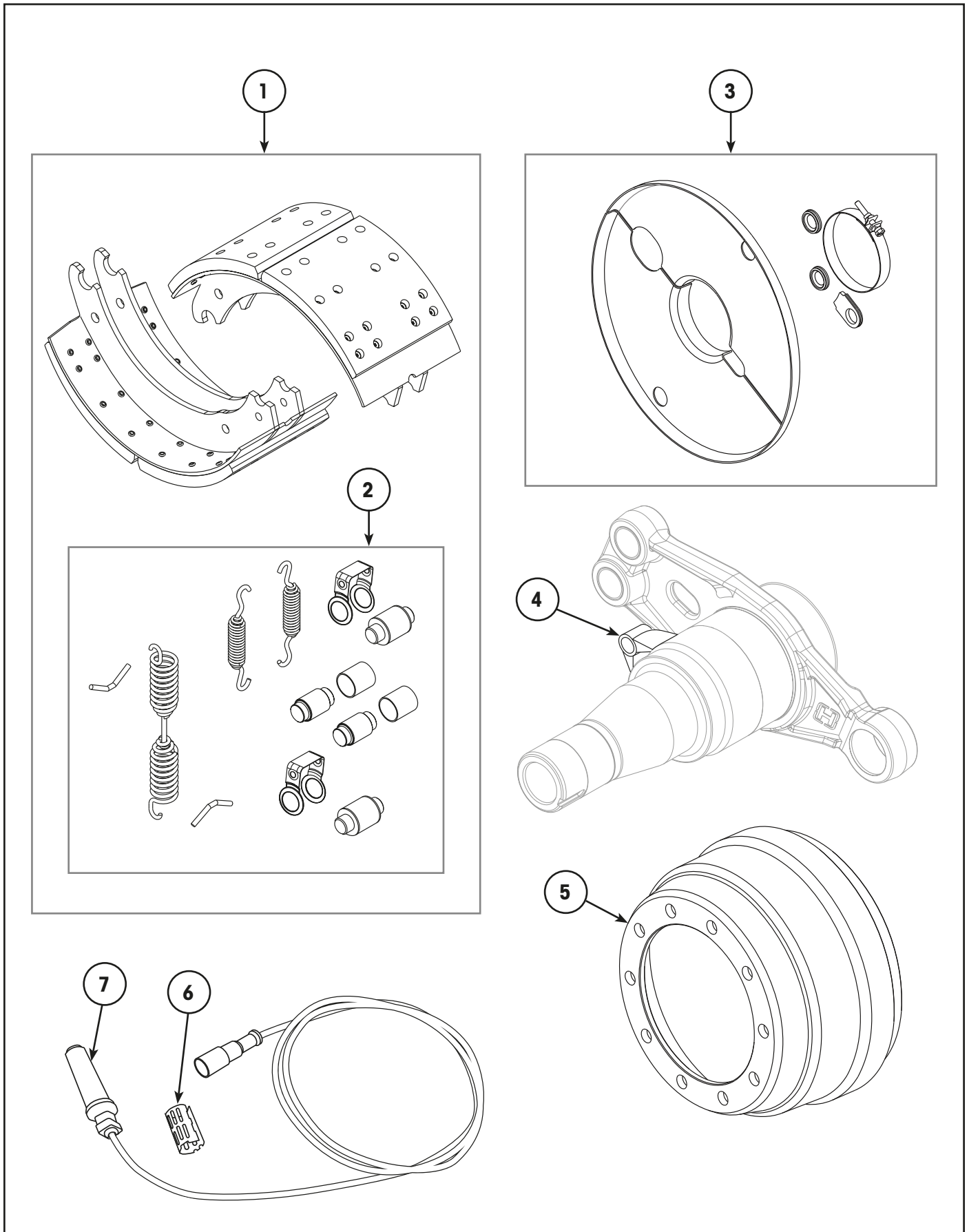
NOTICE: All quantities listed within this parts list are as applicable for one axle assembly.

ABBREVIATIONS

Abbreviations used in this document include the following terms:

- AR – As Required
- ADI – Austempered Ductile Iron
- DDSB – Double Diaphragm Spring Brake
- Exc – Except
- HXS – Hendrickson Extended Service brakes
- NLA – No Longer Available
- NSS – Not Serviced Separately
- PCD – Pitch Circle Diameter

DRUM BRAKES





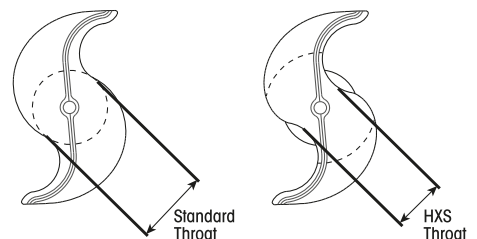
15" & 16.5" DRUM FOUNDATION BRAKE

| Item | Part Number | Description | Qty | Notes |
|------|--------------|---|-----|--|
| 1 | S-27783-1 | Brake Overhaul Kit, 15" x 8-5/8" – HXS™ | 2 | CTA-033672 (SARN 33672 FB) See box "HXS™ Brakes". Includes item 2. |
| | S-23753-1 | Brake Overhaul Kit, 16.5" x 7" – HXS (Exc CONNEX-ST) | 2 | CTA-016549 (SARN 16549 FB) See box "HXS™ Brakes". Includes brake hardware – item 2. |
| | S-37632-1 | Brake Overhaul Kit, 16.5" x 7" – CONNEX™-ST HXS | 2 | |
| | 98881-042 | Brake Overhaul Kit, 16.5" x 8-5/8" – HXS | 2 | |
| 2 | S-23752 | Kit, Brake Hardware – 15" & 16.5" (Exc kits listed below) | 2 | Includes springs, rollers, bushes, pins & clips. Included in item 1. |
| | S-37633 | Kit, Brake Hardware – CONNEX-ST 16.5" | 2 | |
| | 98881-043 | Kit, Brake Hardware – 16.5" x 8-5/8" | 2 | |
| 3 | S-28500-1550 | 15" Brake Dust Shield Kit 5" Axle | 2 | Includes dust shield, clamp, grommet & inspection plugs. (Refer to website for CONNEX™ ST) |
| | S-28500-1650 | 16.5" Brake Dust Shield Kit 5" Axle | 2 | |
| | S-28500-1657 | 16.5" Brake Dust Shield Kit 5.75" Axle | 2 | |
| 4 | S-27117 | Bracket, ABS Sensor Mounting – 5" Axle | 2 | Suits 127 mm (5") axle. |
| | S-28757 | Bracket, ABS Sensor Mounting – 5.75" Axle | 2 | Suits 146 mm (5.75") axle. |
| 5 | S-27826 | Brake Drum, 15" x 8-5/8" – 8 Stud 275 PCD | 2 | Lightweight. |
| | S-26390 | Brake Drum, 15" x 8-5/8" – 10 Stud 285 PCD | 2 | Lightweight. |
| | E38176 | Brake Drum, 16.5" x 7" – 10 Stud 285 PCD | 2 | Lightweight Hendrickson. |
| | D-30114 | Brake Drum, 16.5" x 7" – 10 Stud 285 PCD | 2 | Cast. |
| | C-31699 | Brake Drum, 16.5" x 7" – 10 Stud 335 PCD | 2 | Cast. |
| | 98815-028 | Brake Drum, 16.5" x 7" – 5 Spoke | 2 | Drum only. Included in 98792-013. |
| | 98792-013 | | 2 | HN hub & drum assembly. |
| | 98815-025 | Brake Drum, 16.5" x 8-5/8" – 10 Stud 285 PCD | 2 | Cast. |
| | E39848 | Brake Drum, 16.5" x 8-5/8" – 10 Stud 285 PCD | 2 | Lightweight Hendrickson. |
| | C-30652 | Brake Drum, 16.5" x 8-5/8" – 10 Stud 335 PCD | 2 | Cast. |
| 6 | 99008-001 | Clip, ABS Sensor Retainer | 2 | |
| 7 | 98831-001 | Sensor, Straight ABS with 1.7m lead | 2 | |
| | A-23619-3 | Sensor, 90° ABS with 1m lead (Not Illustrated) | 2 | Suits steer axles axle. |

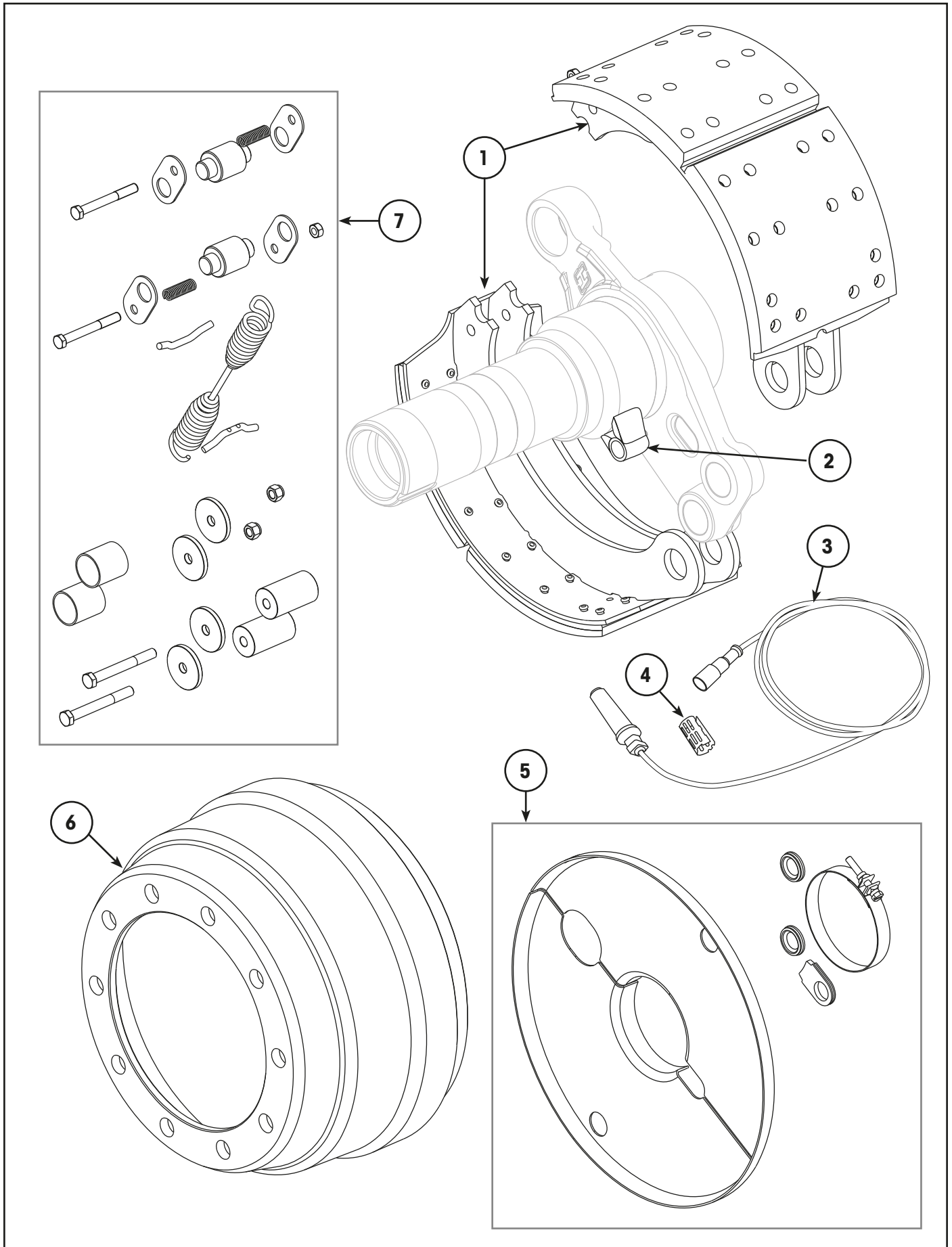
HXS™ Brakes

Hendrickson Extended Service™ (HXS™) brakes use thicker lining blocks, which extends the distance travelled between brake services. They can only be fitted to HXS S-cams because the throat is smaller to allow for the thicker linings. Older standard thickness brake linings are no longer available from Hendrickson.

HXS S-cams have been standard on all Hendrickson axles since 14 March 2000 and are standard for replacement camshafts. They can be identified by the letters HXS stamped into the spine end of the S-cam. HXS brake shoes are prominently stamped with the letters HXS. Standard brake shoes can be fitted to Hendrickson HXS S-cams.



The end of the S-cam will be marked with the letters HXS.



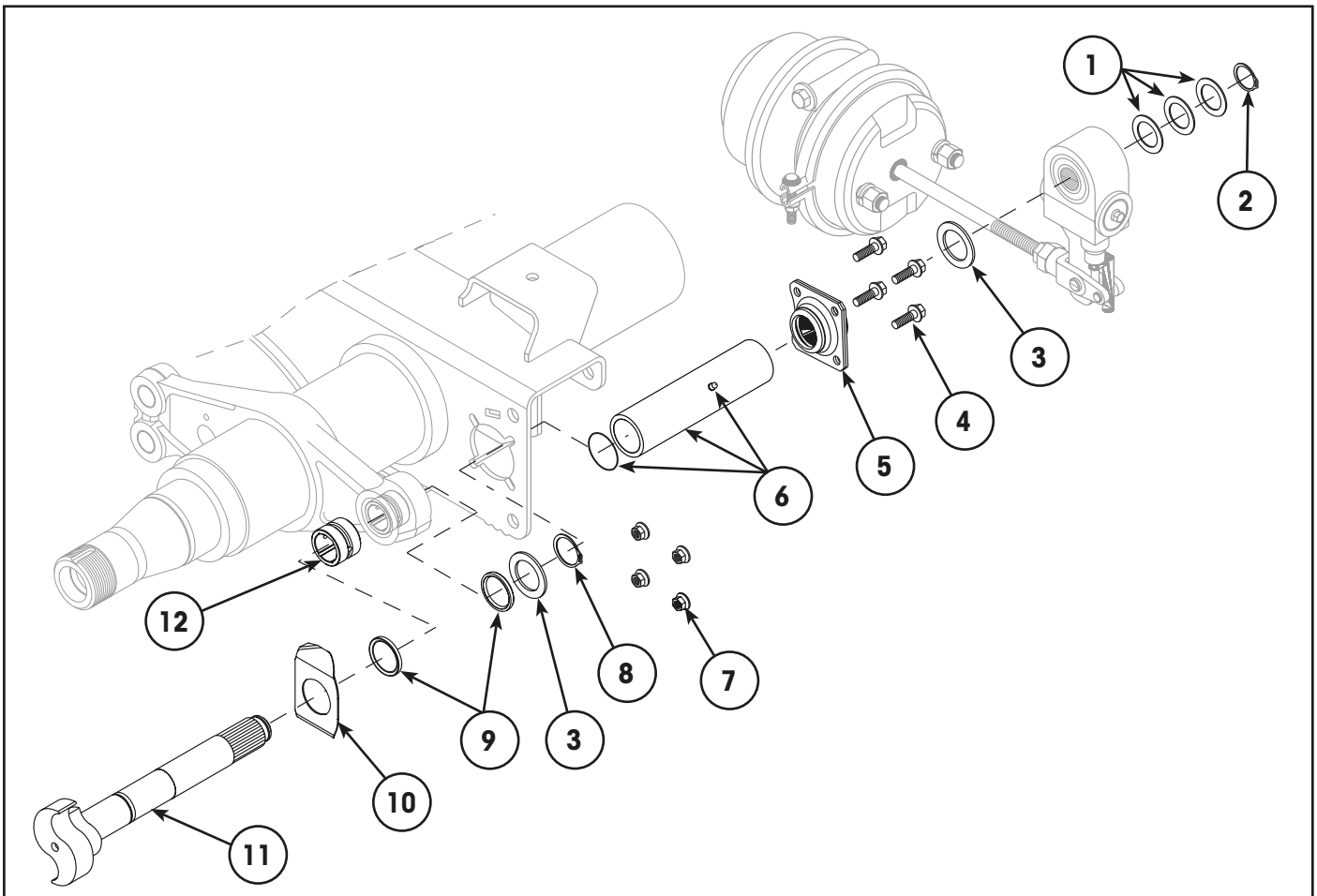


P-TYPE DRUM FOUNDATION BRAKE

| Item | Part Number | Description | Qty | Notes |
|------|--------------|---|-----|---|
| 1 | 98881-029 | Brake Shoe, P-Type – 16.5" x 7" HXS – H20 Lining | 4 | CTA-01 6549 (SARN 16549 FB) See box "HXSTM Brakes" on page 5. Shoe assemblies only, use with brake hardware – item 7. |
| | 98881-007 | Brake Shoe, P-Type – 16.5" x 7" HXS – MB21 Lining | 4 | SARN 16550 FB. See box "HXSTM Brakes" on page 5. Shoe assemblies only, use with brake hardware – item 7. |
| 2 | S-27117 | Bracket, ABS Sensor Mounting – 5" Axle | 2 | Suits 127 mm (5") axle. |
| | S-28757 | Bracket, ABS Sensor Mounting – 5.75" Axle | 2 | Suits 146 mm (5.75") axle. |
| 3 | 98831-001 | Sensor, Straight ABS with 1.7m lead | 2 | |
| 4 | 99008-001 | Clip, Retaining – ABS Sensor | 2 | |
| 5 | S-28500-1650 | Kit, Dust Shield – 16.5" Brake with 5" Axle | 2 | Includes dust shield, clamp, grommet & inspection plugs. |
| | S-28500-1657 | Kit, Dust Shield – 16.5" Brake with 5.75" Axle | 2 | |
| 6 | D-30114 | Brake Drum, 16.5" x 7" – 10 Stud 285 PCD | 2 | Cast. |
| | E38176 | Brake Drum, 16.5" x 7" – 10 Stud 285 PCD | 2 | Lightweight Hendrickson. |
| | C-31699 | Brake Drum, 16.5" x 7" – 10 Stud 335 PCD | 2 | Cast. |
| 7 | 98881-039 | Kit, Brake Hardware | 2 | Includes springs, pins, rollers, bushes, bolts, nuts, washers, plates & spacers. |



INTRAAX® ENCLOSED S-CAM, EARLY TYPE (PRE-2000)

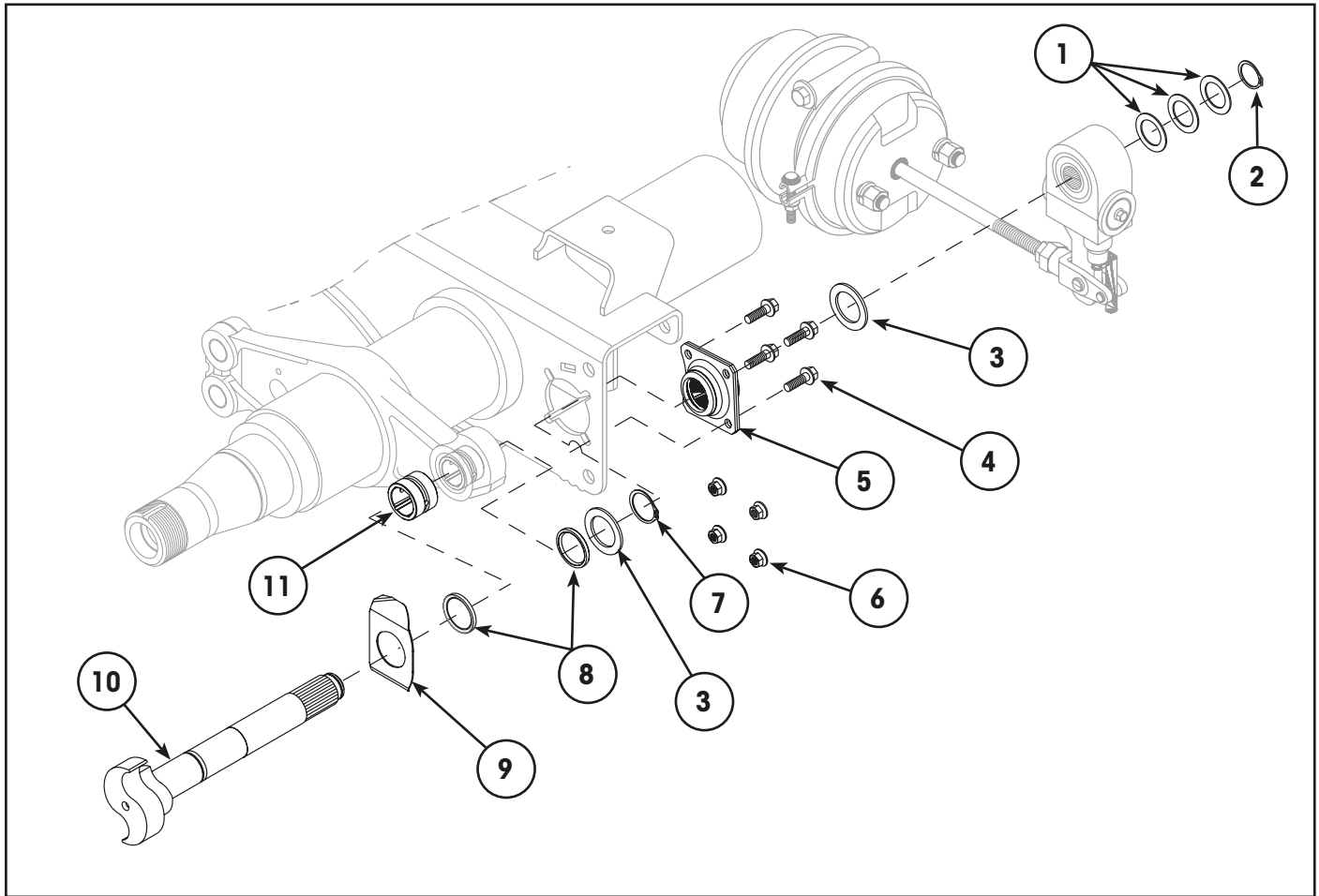


| Item | Part Number | Description | Qty | Notes |
|------|-------------|------------------------------------|-----|--|
| 1 | A-20812 | Washer, Outer – Brake Adjuster | 6 | |
| 2 | A-20811 | Ring, Retaining – Brake Adjuster | 2 | |
| 3 | A-31650 | Washer, Inner - S-Cam Shaft | 4 | |
| 4 | SA-6900-5 | Screw, Flanged – 3/8" x 1.25" | 8 | |
| 5 | S-25440 | Support Bushing Assembly, S-Cam | 2 | |
| 6 | 98933-011 | Kit, S-Cam Tube – Nylon | 2 | Includes grease nipple and O-ring. |
| 7 | SA-7000-3 | Nut, Prevailing Torque – 3/8" | 8 | |
| 8 | A-20808 | Ring, Retaining – S-Cam Shaft | 2 | |
| 9 | A-20807 | Seal, Brake Spider – S-Cam Journal | 4 | [1] Suits 1-7/8" journal. |
| 10 | C-32017 | Washer, S-Cam – Under Head | 2 | |
| 11 | S-25024-1L | S-Cam, Brake – LH. HXS™ profile. | 1 | 15" brake with HXS S-cam profile. See box "HXS™ Brakes" on page 5. |
| | S-25024-1R | S-Cam, Brake – RH. HXS profile. | 1 | |
| | S-24636-1L | S-Cam, Brake – LH. HXS profile. | 1 | 16.5" brake with HXS S-cam profile. See box "HXS™ Brakes" on page 5. |
| | S-24636-1R | S-Cam, Brake – RH. HXS profile. | 1 | |
| 12 | S-20823 | Bush, Brake Spider – S-Cam Journal | 4 | *See Note. Suits 1-7/8" journal. |

[1] NOTE: Enclosed S-Cam system is only suitable for INTRAAX® axles with 1-7/8" journal and is not available for INTRAAX axles with 2" journals.



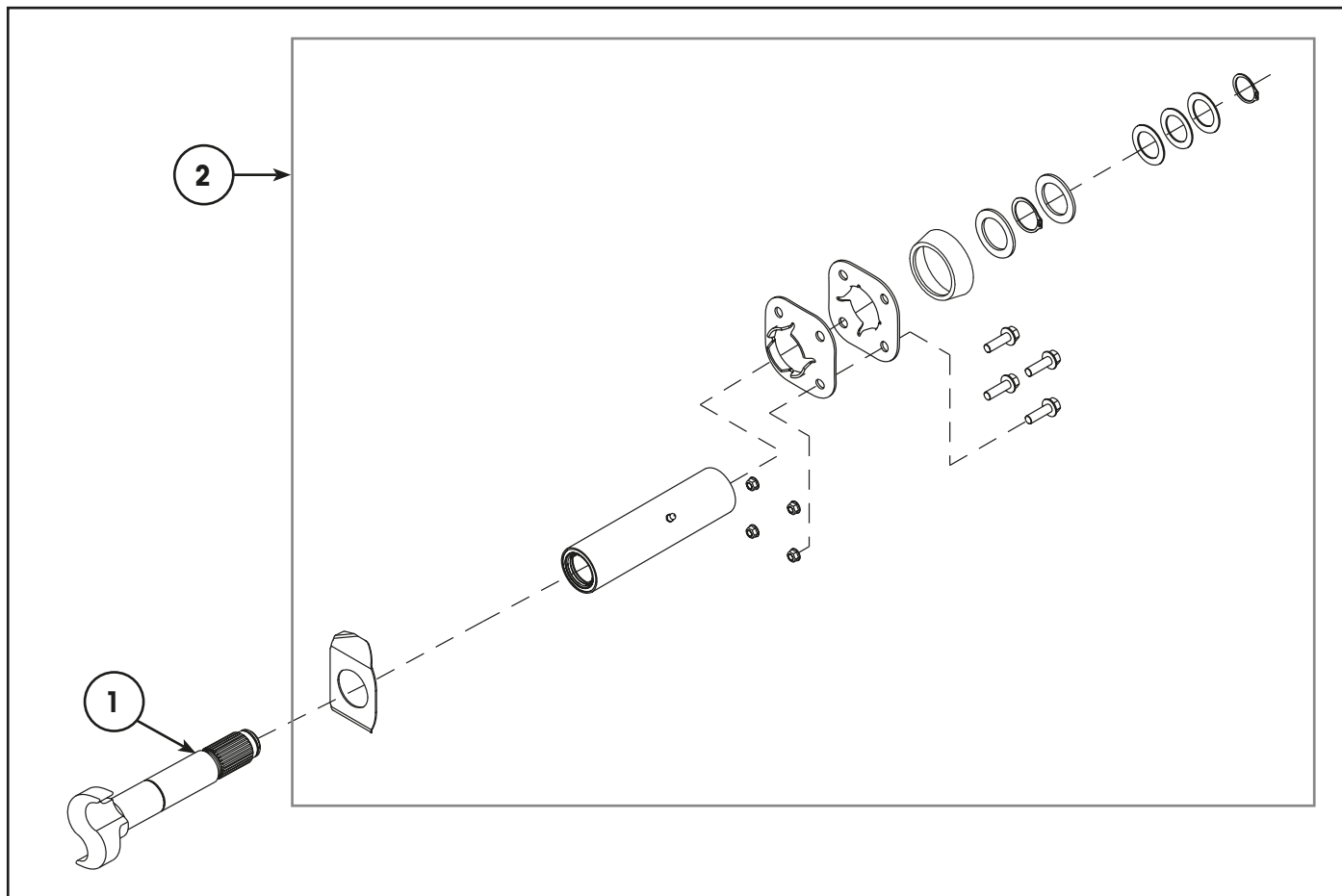
INTRAAX® NON-ENCLOSED S-CAM EARLY TYPE (PRE-2000)



| Item | Part Number | Description | Qty | Notes |
|------|-------------|------------------------------------|-----|--|
| 1 | A-20812 | Washer, Outer – Brake Adjuster | 6 | |
| 2 | A-20811 | Ring, Retaining – Brake Adjuster | 2 | |
| 3 | A-31650 | Washer, Inner - S-Cam Shaft | 4 | |
| 4 | SA-6900-5 | Screw, Flanged – 3/8" x 1.25" | 8 | |
| 5 | S-25440 | Support Bushing Assembly, S-Cam | 2 | |
| 6 | SA-7000-3 | Nut, Prevailing Torque – 3/8" | 8 | |
| 7 | A-20808 | Ring, Retaining – S-Cam Shaft | 2 | |
| 8 | A-20807 | Seal, Brake Spider – S-Cam Journal | 4 | Suits 1-7/8" journal. |
| | S-22885 | Seal, Brake Spider – S-Cam Journal | 4 | Suits 2" journal. |
| 9 | C-32017 | Washer, S-Cam – Under Head | 2 | |
| 10 | S-25024-1L | S-Cam, Brake – LH. HXS™ profile. | 1 | 15" brake with HXS S-cam profile. See box "HXS™ Brakes" on page 5. |
| | S-25024-1R | S-Cam, Brake – RH. HXS profile. | 1 | |
| | S-24636-1L | S-Cam, Brake – LH. HXS profile. | 1 | 16.5" brake with HXS S-cam profile. See box "HXS™ Brakes" on page 5. |
| | S-24636-1R | S-Cam, Brake – RH. HXS profile. | 1 | |
| 11 | S-20823 | Bush, Brake Spider – S-Cam Journal | 4 | Suits 1-7/8" journal. |
| | S-22898 | Bush, Brake Spider – S-Cam Journal | 4 | Suits 2" journal. |



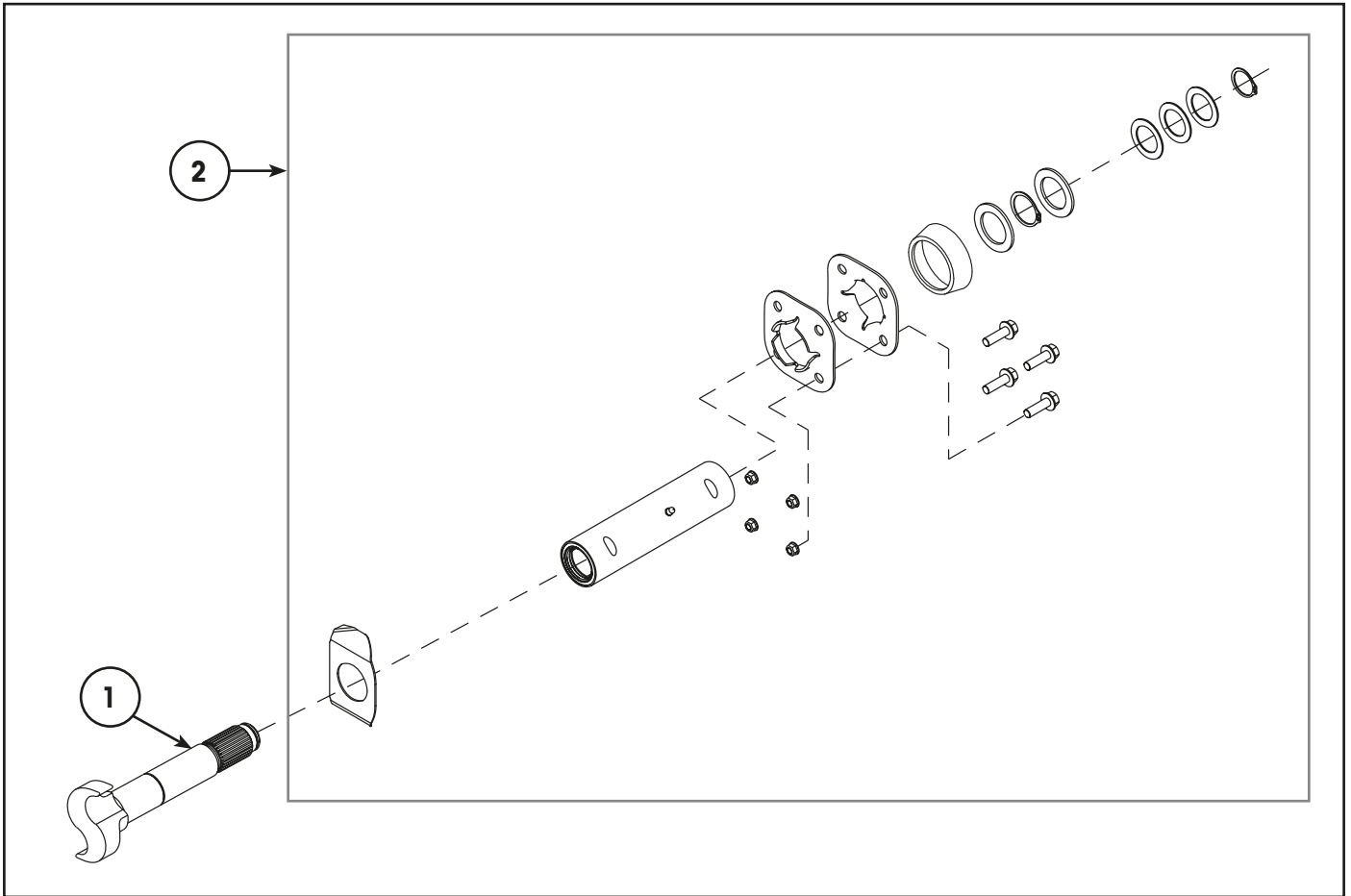
INTRAAX® 15" SEVERE DUTY CAM TUBE



| Item | Part Number | Description | Qty | Notes |
|------|-------------|-----------------------------------|-----|---|
| 1 | S-25024-1L | HXS™ S-Cam, Brake – LH. | 1 | HXS S-cam profile. See box "HXS™ Brakes" on page 5. |
| | S-25024-1R | HXS S-Cam, Brake – RH. | 1 | |
| 2 | S-31706 | Kit, Cam Tube – 15" Brake | 2 | Includes items tubes, seals, supports and associate hardware. |
| 3 | 98881-027 | Overhaul Kit – S-Cam & Tube, LH | 1 | Includes items 1 & 2 (S-25024-1L & S-31706). Not illustrated. |
| | 98881-028 | Overhaul Kit – S-Cam & Tube, RH | 1 | |
| 4 | 98881-026 | Overhaul Kit – S-Cam & Tube, Axle | 1 | Includes both items 3 (98881-027 & 98881-028). Not illustrated. |



INTRAAX® 16.5" SEVERE DUTY CAM TUBE



| Item | Part Number | Description | Qty | Notes |
|------|-------------|-----------------------------------|-----|---|
| 1 | S-24636-1L | HXS™ S-Cam, Brake – LH | 1 | HXS S-cam profile. See box "HXS™ Brakes" on page 5. |
| | S-24636-1R | HXS S-Cam, Brake – RH | 1 | |
| 2 | S-31703 | Kit, Cam Tube – 16.5" Brake | 2 | Includes items tubes, seals, supports and associate hardware. |
| 3 | 98881-023 | Overhaul Kit – S-Cam & Tube, LH | 1 | Includes items 1 & 2 (S-31703 & S-24636-1L). Not illustrated. |
| | 98881-024 | Overhaul Kit – S-Cam & Tube, RH | 1 | Includes items 1 & 2 (S-31703 & S-24636-1R). Not illustrated. |
| 4 | 98881-025 | Overhaul Kit – S-Cam & Tube, Axle | 1 | Includes both items 3 (98881-023 & 98881-024). Not illustrated. |



DRUM BRAKE CHAMBER GENERAL INFORMATION

INTRAAX® Drum Brake Chamber Application

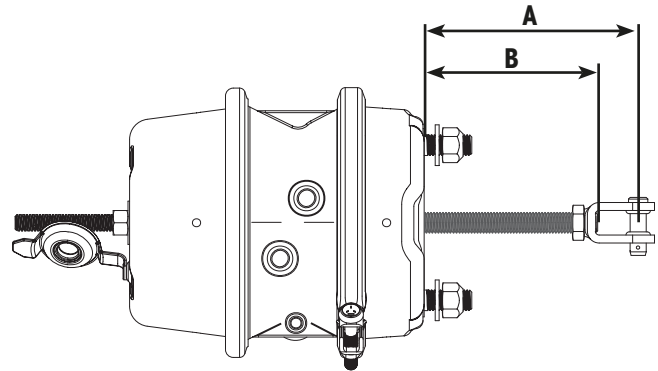
The applicable brake chambers for INTRAAX suspension systems are determined by the following:

- Brake adjuster length from the centre of the S-cam spline to the centre of the brake chamber clevis pin
- Brake chamber pushrod stroke
- Brake chamber pushrod length

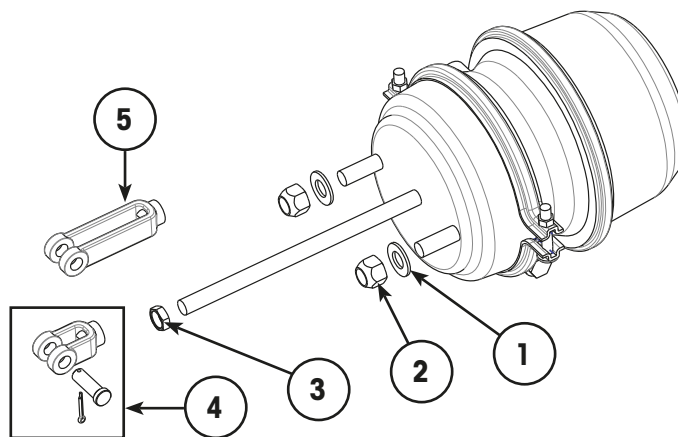
UBL NOTE: The Under Beam Lift kit UBL-401 for AANT axles cannot be paired with some brake chambers. This is due to insufficient clearance that restricts correct movement. The TSE UltraLife 30/30 3" stroke brake chamber is known to interfere. However, other similar sized long stroke brake chambers may also cause obstruction.

Brake Chamber Measurements

- A Clevis.** This is the distance between the brake chamber face and the centre of the clevis pin opening.
- B Rod.** This is the length of the rod measured from the brake chamber face to the end of the rod.



DRUM BRAKE CHAMBERS



| Item | Part Number | Description | Notes |
|------|-------------|---|--------------|
| 1 | 22962-004 | Washer, Hardened – 5/8 | [1] |
| 2 | 47764-000 | Nut, Lock – 5/8 UNC, 2B | [1] |
| 3 | SA-1300-55 | Jam Nut, Clevis – 5/8 UNF, 2A | [1] |
| 4 | A-21420 | Kit, Brake Clevis, Split Pin & Clevis Pin – 50 mm | [1] |
| 5 | 98870-001 | Clevis, Brake Adjuster – 100 mm | Optional [1] |

[1] NOTE: All drum brake chambers are supplied complete with new fasteners and 50 mm clevis to suit manual and/or Haldex automatic brake adjusters. Refer to “[Brake Adjusters](#)” on page 14 for further details regarding brake adjusters.



Common Drum Brake Chambers

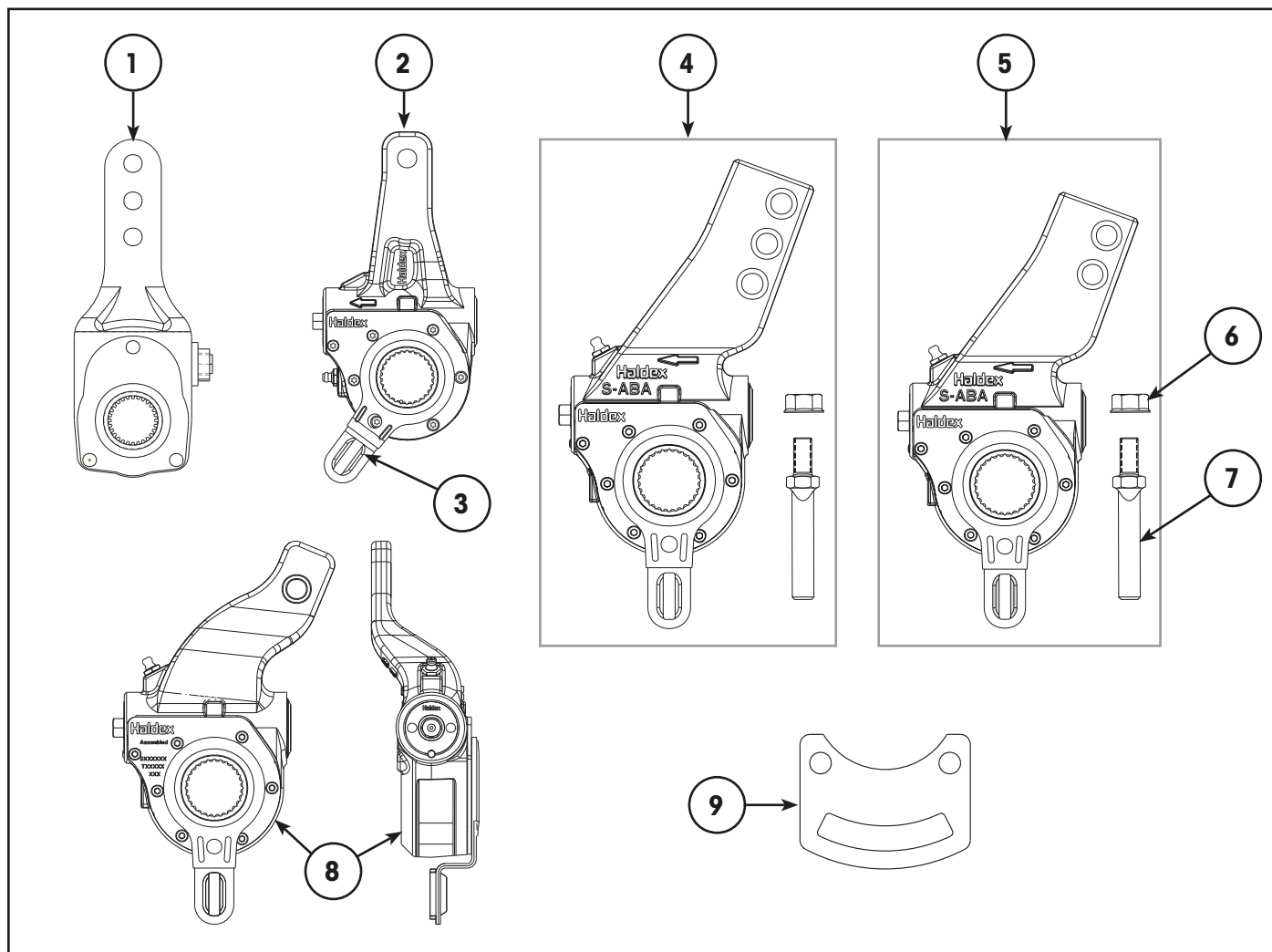
| Stroke | Slack | Model | To Clevis | Rod (Approx.) | Size | Part Number ^[2] | Notes |
|------------|-----------------|----------------------|---------------|----------------|-----------|----------------------------|-----------------------|
| 2½ INCH | 5", 5.5", 6" | D22/P22 | – | 8" 203mm | 24 | 98832-005 | Clevis not attached |
| | | | | | 30 | 98832-003 | Clevis not attached |
| | | | | | 24/30 | 98832-007 | Clevis not attached |
| | | | | | 30/30 | 98832-004 | Clevis not attached |
| | | AAL/AANL/ EDL/EDT | 6.9" 175mm | 5.6" 142mm | 24 | 98832-129 | |
| | | | | | 30 | 98832-128 | |
| | | | | | 24/30 | 98832-126 | |
| | | | | | 30/30 | 98832-127 | |
| | | AAT/AANT | 11" 279mm | 10" 254mm | 24 | 98832-005 | [3] Refer note below. |
| | | | | | 30 | 98832-006 | |
| | | | | | 24/30 | 98832-065 | |
| | | | | | 30/30 | 98832-066 | |
| 3 INCH | 6" | AAT/AANT | 11" 279mm | 9.75" 248mm | 30 | 98832-102 | Replaces 98832-063 |
| | | | | | 24/30 | 98832-105 | Replaces 98832-062 |
| | | | | | 30/30 | 98832-116 | Replaces 98832-061 |
| | | AAL/AANL | 7" 178mm | 5.75" 156mm | 30 | 98832-103 | Replaces 98832-071 |
| | | | | | 24/30 | 98832-106 | Replaces 98832-070 |
| | | | | | 30/30 | 98832-117 | Replaces 98832-069 |
| | 6.5", 7" | AAT/AANT | 9.8" 249mm | 8.6" 218mm | 24 | 98832-138 | Replaces 98832-064 |
| | | | | | 30 | 98832-137 | Replaces 98832-063 |
| | | | | | 24/30 | 98832-136 | Replaces 98832-062 |
| | | | | | 30/30 | 98832-135 | Replaces 98832-061 |
| | | AAL/EDL/EDT | 6.3" 160mm | 5.1" 130mm | 24 | 98832-142 | Replaces 98832-072 |
| | | | | | 30 | 98832-141 | Replaces 98832-071 |
| | | | | | 24/30 | 98832-140 | Replaces 98832-070 |
| | | | | | 30/30 | 98832-139 | Replaces 98832-069 |
| | 5.5", 6" | CONNEX ST | 2.45" 62mm | – | 24 | 98832-118 | Welded clevis |
| | | | | – | 30 | C-38863 | Welded clevis |
| – | | | | 24/30 | 98832-119 | Welded clevis | |
| – | | | | 30/30 | 98832-144 | Welded clevis | |

[2] NOTE: TSE brake chambers

[3] NOTE: When replacing a Type-24 brake chamber fitted to either an AAT or AANT INTRAAX axle (10" rod and 2.5" stroke), use part number **98832-005** (8" rod and 2.5" stroke) and extended clevis part no. **98870-001**.



BRAKE ADJUSTERS



| Item | Part Number | Description | Qty | Notes |
|------|-------------|---|-----|--|
| 1 | 98834-004 | Brake Adjuster, Manual – 5", 6" & 7" | 2 | |
| | 98834-008 | Brake Adjuster, Manual – 5.5" & 6.5" | 2 | |
| 2 | S-37277 | Brake Adjuster, Auto – 5.5" | 2 | Includes grommet, item 3. |
| | S-37279 | Brake Adjuster, Auto – 6" | 2 | |
| 3 | 98515-004 | Grommet, Stud – Haldex Brake Adjuster | 2 | Includes grommet, item 3. |
| 4 | 98834-028 | Kit, Auto Brake Adjuster – 5", 6" & 7" | 2 | Includes stud, nut & grommet, items 3, 6 & 7. |
| 5 | 98834-029 | Kit, Auto Brake Adjuster – 5.5" & 6.5" | 2 | |
| 6 | S-24597 | Nut, Flanged – Auto Brake Adjuster Anchor | 2 | |
| 7 | S-24596 | Stud – Auto Brake Adjuster Anchor | 2 | |
| 8 | 98834-036 | Brake Adjuster, 5.5" Offset Auto – Left Hand | 1 | Suits CONNEX™ ST Underslung Includes grommet, item 3. |
| | 98834-037 | Brake Adjuster, 5.5" Offset Auto – Right Hand | 1 | |
| | 98834-034 | Brake Adjuster, 6" Offset Auto – Left Hand | 1 | Suits CONNEX™ ST Underslung Includes grommet, item 3. |
| | 98834-035 | Brake Adjuster, 6" Offset Auto – Right Hand | 1 | |
| 9 | 98870-188 | Support Plate, Auto Brake Anchor | 2 | |

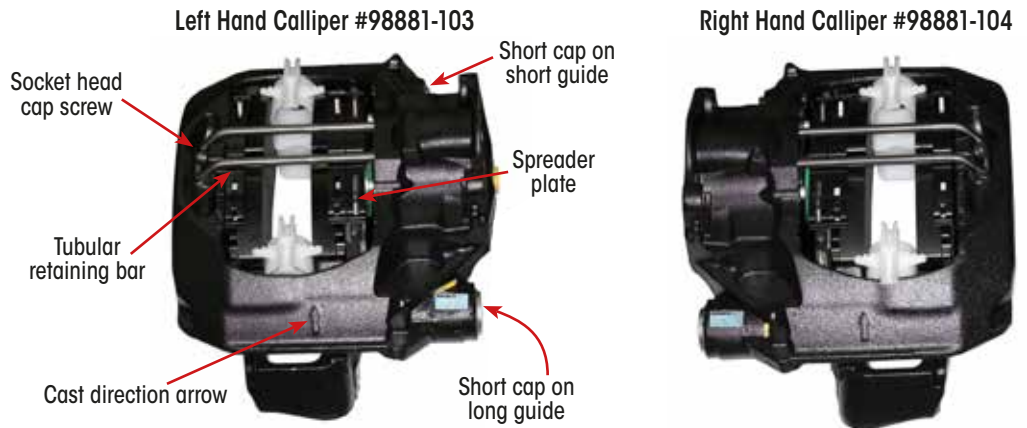
DISC BRAKES

CALLIPER IDENTIFICATION

NOTICE: To avoid excessive and tapered brake pad wear, it is important not to swap the Left and Right brake callipers.

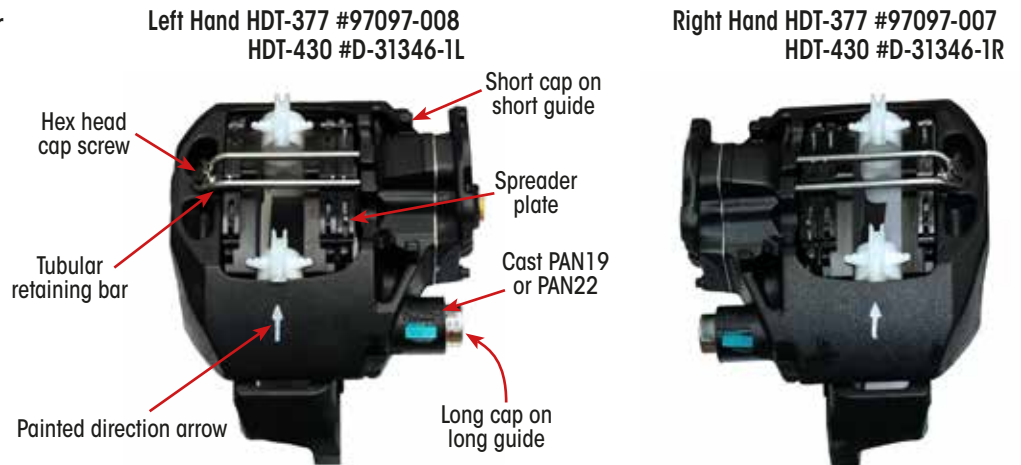
MAXX22T HDT-415 Calliper

- 415 mm rotor.
- Direction of rotation is from long guide to short guide.
- Tubular retaining guide.
- Single piston design with spreader plate.
- Cast direction arrow.
- Both guides have short caps.



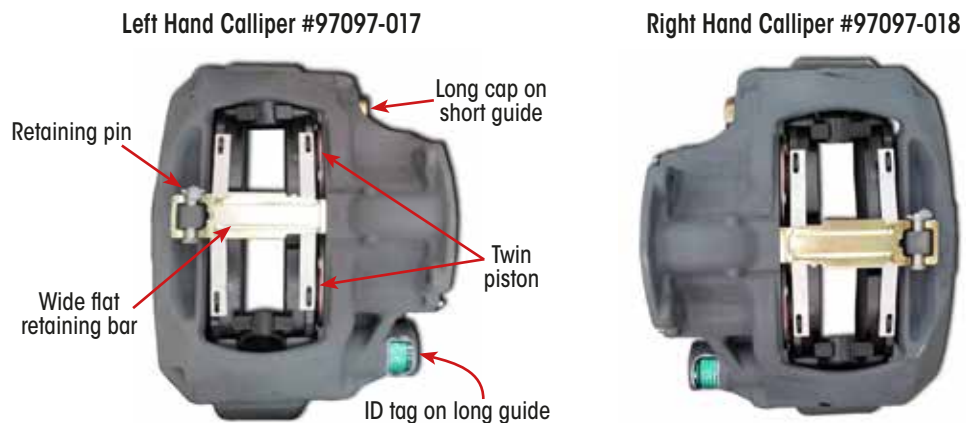
Wabco HDT-377 & -430 Calliper

- 377 or 430 mm rotor.
- Direction of rotation is from long guide to short guide.
- Tubular retaining guide.
- Single piston design with spreader plate.
- Painted direction arrow.
- Short guide has short cap, longer guide has longer cap.



Knorr-Bremse SN7 Calliper

- 430 mm rotor.
- Direction of rotation is from long guide to short guide.
- Wide flat retaining guide.
- Twin piston without spreader plate.
- No direction arrow.



Two-piece design SB7 calliper

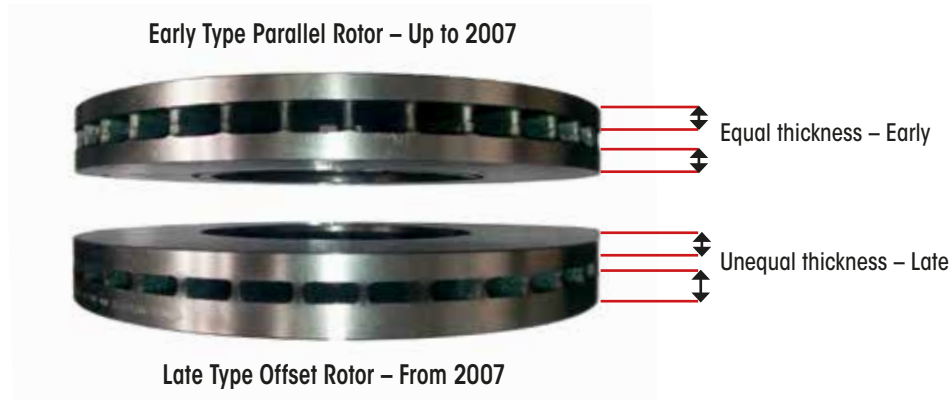


Knorr-Bremse SB7 Calliper

SB7 was a two-piece calliper. The newer SN7 is a mono-block design that was introduced during June 2006. Visually, the two calliper designs can be identified by comparing calliper housings. Refer to the **SB7** image (left) and the **SN7** images shown above.

CONMET BRAKE ROTOR IDENTIFICATION

During July 2007, Hendrickson introduced a new offset brake rotor design for all pre-set disc brake applications to replace the parallel rotor design. Visually the two rotor designs can be identified as shown below. When servicing these rotors, it is important to order the correct service kit, as these rotors are **not interchangeable**.



Early Type Parallel Brake Rotor

This rotor is no longer available from the supplier. Use the updated rotor and hub assembly **98801-076**. For details of these replacement rotors and hubs refer to Wabco HTD-430 brake system on [page 23](#) and Hendrickson [Wheel End Parts Bulletin 97114-100](#).

The parallel rotor used prior to July 2007 can be identified as follows:

- Both braking plate thickness are the same
- ConMet part no. 10009970 is cast onto the face of the rotor

NOTE: Early type (parallel) and late type (offset) rotors are not interchangeable.



Up to 2007 early type – part number 10009970 cast into rotor

Late Type Offset Brake Rotor

The offset rotor used after July 2007 can be identified as follows:

- Both braking plate thickness are different
- ConMet part number stamped onto the outer edge of the rotor. This number will be 10016195 from 2007 to 2018, 10083615 during 2018 and 10084701 from 2019 onwards.

Rotor rebuild kit part number **98815-031** is the latest design with the ABS ring held by circlip. This kit consists of the following:

- Rotor, Stepped – 430 x 45 mm
- Nut, Hex Flanged – 5/8" x 18 UNF Grade 8 (x10)
- Stainless snap ring – circlip
- ABS Pulse Ring

Insulator Note: The stainless steel insulator installed between aluminium hub and rotor should be cleaned and reused. It is only available as part of the complete hub and rotor assembly. Refer wheel end parts list [97114-100](#).



Offset rotor with one rotor plate thicker than the other.

The part number is stamped onto edge
 10016195 – 2007 to 2018 – ABS ring 10 Bolt
 10083615 – 2018 – ABS ring 5 Bolt
 10084701 – 2019 onwards – ABS ring with Circlip



TOOWOOMBA IRON HUB ROTOR KIT

Toowoomba hubs can usually be identified by the letters **TWP** or **Toowoomba Wheel Products** cast into the hub.

The Toowoomba iron hub and rotor assembly is no longer available in either 285 or 335 PCD configuration. However, Hendrickson has developed a kit to enable the replacement of a damaged or worn rotor.

NOTE: A Toowoomba hub replacement procedure is available in Hendrickson technical publication [97117-254](#).

Rotor service kit part number **98815-026** includes the following parts:

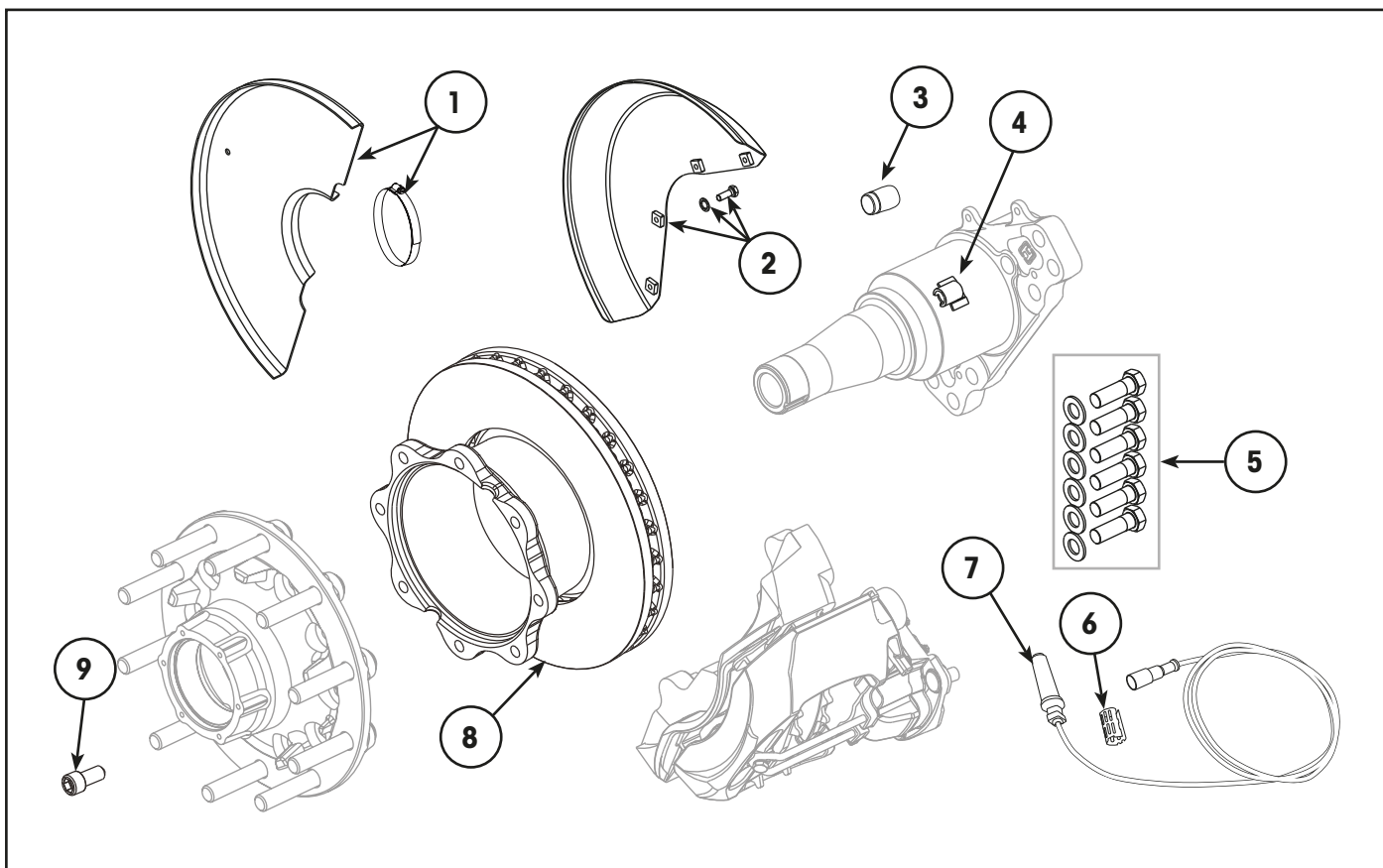
- M16 x 2 Thread x 45 mm Metric Hex Head Bolts
- Flat Washers
- 430 mm Rotor Assembly
- ABS Sensor bracket – Weld On

ABS NOTE: If required, a separate ABS tone ring is available to suit the Toowoomba iron hub with part number **98814-013**. Refer to [“ABS Tone Rings – 430 mm” on page 27](#).



WABCO HTD-377™ SYSTEM – 19.5 [CTA-044547 SARN 44547 FB]

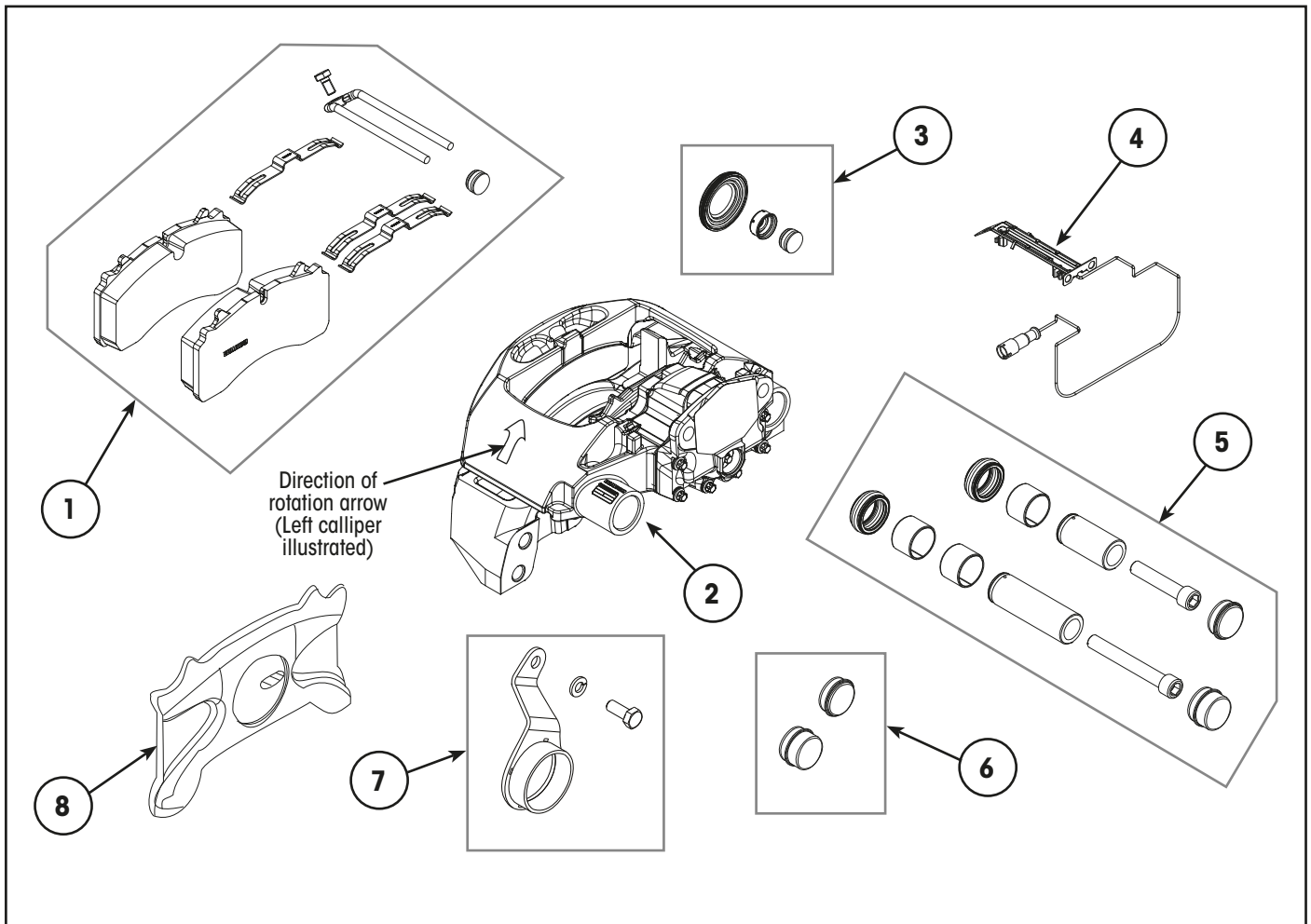
377 mm Rotor



| Item | Part Number | Description | Qty | Notes |
|------|--------------|--|-----|---|
| 1 | S-28570-3750 | Kit, Clamp On Type Dust Shield – Disc Brake | 2 | Suits 127 mm (5") axle. Includes clamp. |
| | NLA | Kit, Clamp On Type Dust Shield – Disc Brake | 2 | Suits 146 mm (5.75") axle. |
| 2 | S-36224-4375 | Kit, Dust Shield – Disc Brake | 2 | Bolt on type. Includes bolts & washers. |
| 3 | B-36165 | Bush, ABS Sensor Mounting | 2 | Suits 146 mm (5.75") axle. |
| 4 | 98814-005 | Bracket, ABS Sensor Mounting – Pressed | 2 | Suits 127 mm (5") axle. |
| | S-28757 | Bracket, ABS Sensor Mounting – Cast | 2 | Suits 146 mm (5.75") LDA axle. |
| 5 | 98881-105 | Kit, Bolt & Washer Calliper to Axle – M20 x 2.5 x 60 | 2 | Suits all except below. |
| | 98881-110 | Kit, Bolt & Washer Calliper to Axle – M20 x 2.5 x 60 | 2 | Suits trailer disc steerable. |
| 6 | 99008-001 | Clip, Retaining – ABS Sensor | 2 | |
| 7 | 98831-001 | Sensor, Straight ABS with 1.7m lead | 2 | Suits all except below. |
| | A-23619-3 | Sensor, 90-Degree ABS with 1.7m lead | 2 | Suits trailer disc steerable. |
| 8 | 98815-032 | Kit, Rotor & Hardware, 377 mm | 2 | [1] Includes item 9. |
| 9 | 98881-107 | Kit, Socket Head Bolt – M16 x 2 x 35 | 2 | Includes 8 bolts & instructions. Not illustrated. |

[1] NOTE: Refer to Hendrickson [parts bulletin 97114-100](#) for more details regarding hub assemblies and components.

WABCO HTD-377™ CALLIPER – 19.5 [CTA-044547 SARN 44547 FB]



| Item | Part Number | Description | Qty | Notes |
|------|-------------|---|-----|--|
| 1 | 98881-021 | Brake Pad Kit | 1 | Includes pad retaining hardware. |
| 2 | 97097-007 | Calliper Assembly, LH | 1 | [1] Calliper and pad assembly. |
| | 97097-008 | Calliper Assembly, RH | 1 | |
| 3 | D-32676-3 | Repair Kit, Calliper Piston Seal | 2 | Single calliper kit. |
| 4 | 98881-020 | Repair Kit, Pad Wear Indicator | 1 | |
| 5 | D-32676-15 | Repair Kit, Calliper Guide Pin and Bush | 2 | [2] Single calliper kit. |
| 6 | 98881-040 | Kit, Calliper Cap – Heavy Duty | 1 | Includes LH & RH side. Cannot be used with guide pin cover, item 7. |
| 7 | 97805-001 | Kit, Calliper Guide Pin Cover | 1 | Includes LH & RH side. |
| 8 | 97097-026 | Pressure Plate, Brake Pad | 1 | Includes LH & RH side. |

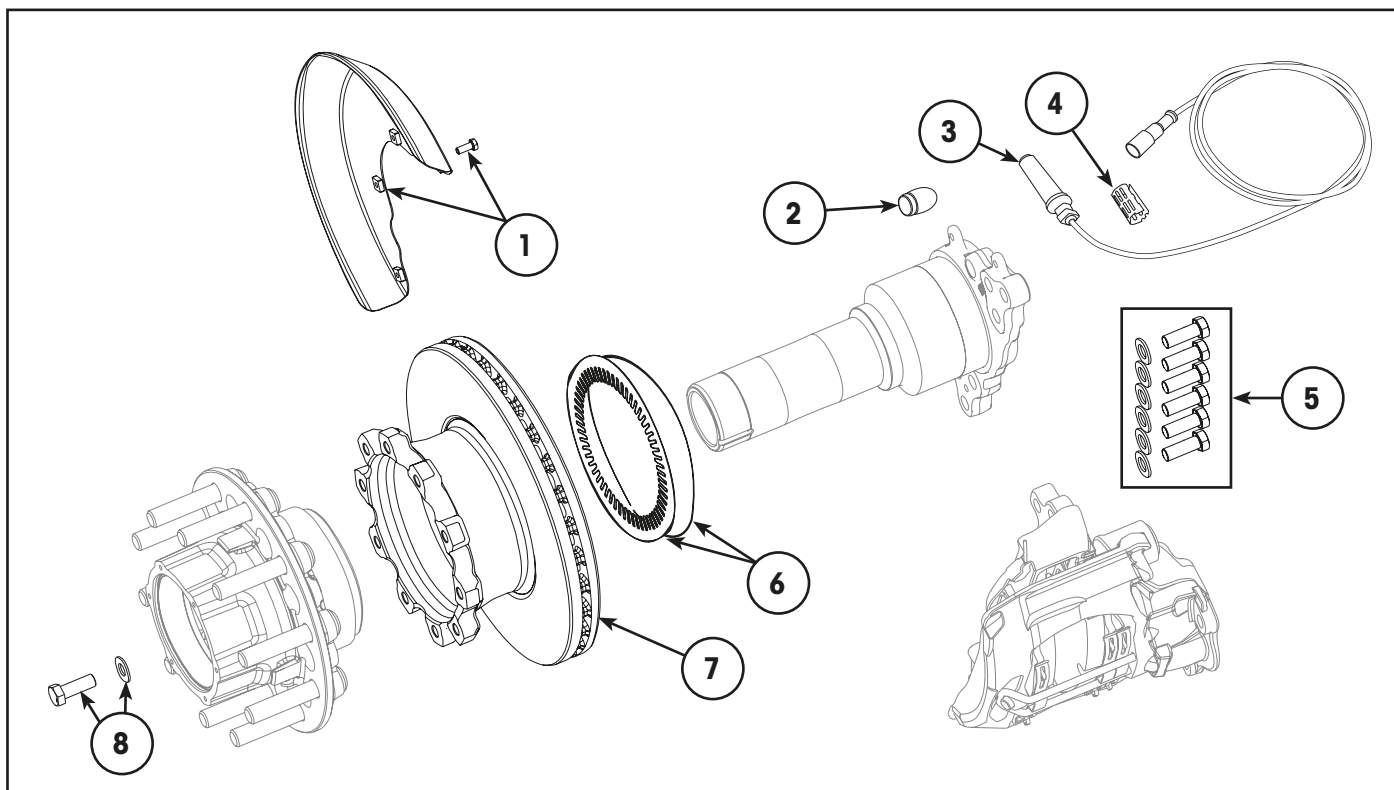
[1] NOTE: Brake calliper assemblies include brake pads, pad retaining hardware and pressure plate, items 1, 3, 5 & 8. They do not include the wear indicators or guide pin covers, items 4 & 7.

[2] NOTE: The calliper guide pin and bush kit (item 5) includes standard calliper caps.



MAXX22T HTD-415™ SYSTEM – 22.5 [CTA-047436 SARN 47436 FB]

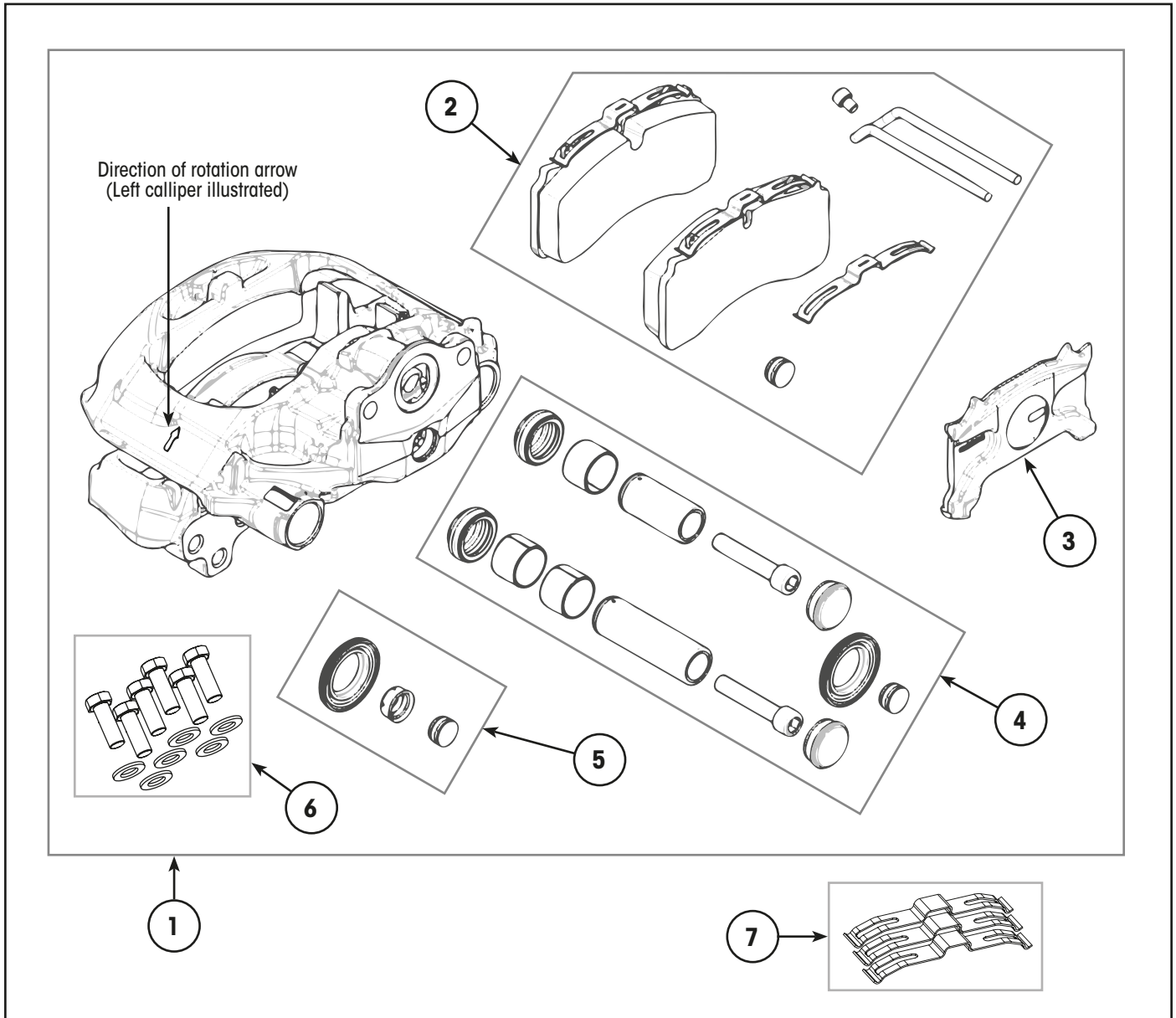
415 mm Rotor



| Item | Part Number | Description | Qty | Notes |
|------|--------------|---|-----|--|
| 1 | S-35720-4415 | Kit, Dust Shield – Disc Brake | 2 | Includes fasteners. |
| 2 | B-36165 | Bush, ABS Sensor Mounting | 2 | |
| 3 | 98831-001 | Sensor, Straight ABS with 1.7m lead | 2 | |
| 4 | 99008-001 | Clip, Retaining – ABS Sensor | 2 | |
| 5 | 98881-106 | Kit, Bolt & Washer Calliper to Axle – M18 x 2.5 | 2 | |
| 6 | 98814-023 | Pulse Ring, ABS & Clip Kit | 2 | Included in items 7 & 9. |
| 7 | 98815-027 | Rotor Kit, 415 mm | 2 | Kit includes rotor, ABS & fasteners, items 6 & 8. Included in item 9. |
| 8 | 98881-109 | Kit, Bolt & Washer Rotor to Hub – Zinc M16 x 2 | 2 | Includes 10 bolts & instructions. Not illustrated. Included in items 7 & 9. |
| 9 | 98818-062 | Rotor & Hub Replacement Kit, 285 PCD | 2 | [1] Kit includes hub with rotor, hub nut, gasket, bearings & fasteners. Not illustrated. |
| | 98818-063 | Rotor & Hub Replacement Kit, 335 PCD | 2 | |

[1] NOTE: Refer to Hendrickson [parts bulletin 97114-100](#) for more details regarding hub assemblies and components.

MAXX22T HTD-415™ CALLIPER – 22.5 [CTA-047436 SARN 47436 FB]

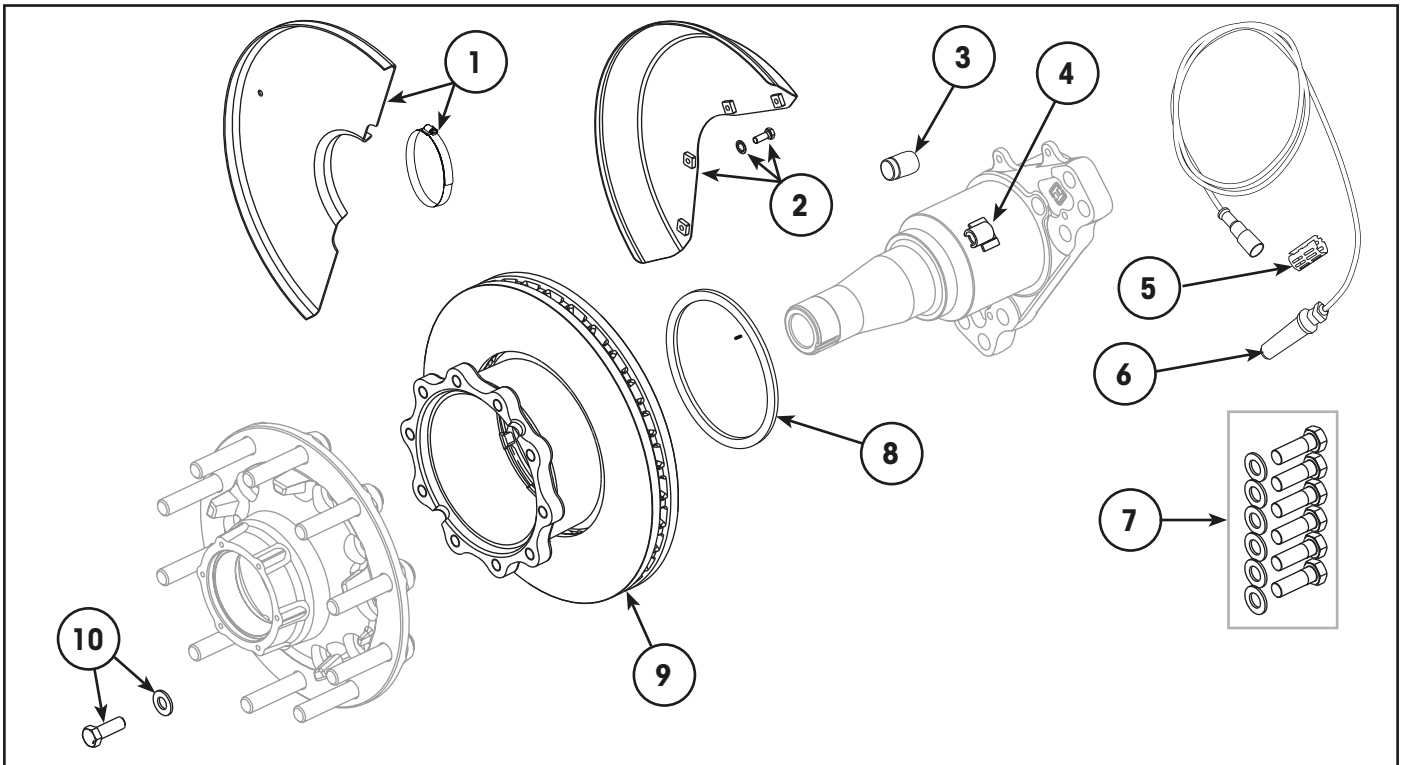


| Item | Part Number | Description | Qty | Notes |
|------|-------------|---|-----|--|
| 1 | 98881-103 | Calliper Assembly, LH | 1 | Includes pads, retainer, clips & fasteners. See previous page for fasteners only. |
| | 98881-104 | Calliper Assembly, RH | 1 | |
| 2 | S-35303-1 | Brake Pad Kit | 1 | Includes pads, springs, holder brackets, screws & plugs. |
| 3 | S-35303-9 | Pressure Plate, Brake Pad | 1 | Includes both LH & RH plates. |
| 4 | S-35303-4 | Repair Kit - Calliper Guide Pin and Bush | 2 | Includes plug, inner seals, outer seals, sliding bolts, metal caps, screws & guide pin bushes. |
| 5 | D-32676-3 | Repair Kit - Calliper Piston Seal | 2 | Includes plug, inner seal & outer seal. |
| 6 | 98881-106 | Kit, Bolt & Washer Calliper to Axle – M18 x 2.5 | 2 | |
| 7 | S-40670/2 | Kit, Brake Pad Clip – Heavy Duty | 2 | Includes 3 heavy duty pad clips. |



WABCO HTD-430™ SYSTEM – 22.5 [CTA-044548 SARN 44548 FB]

430 mm Rotor



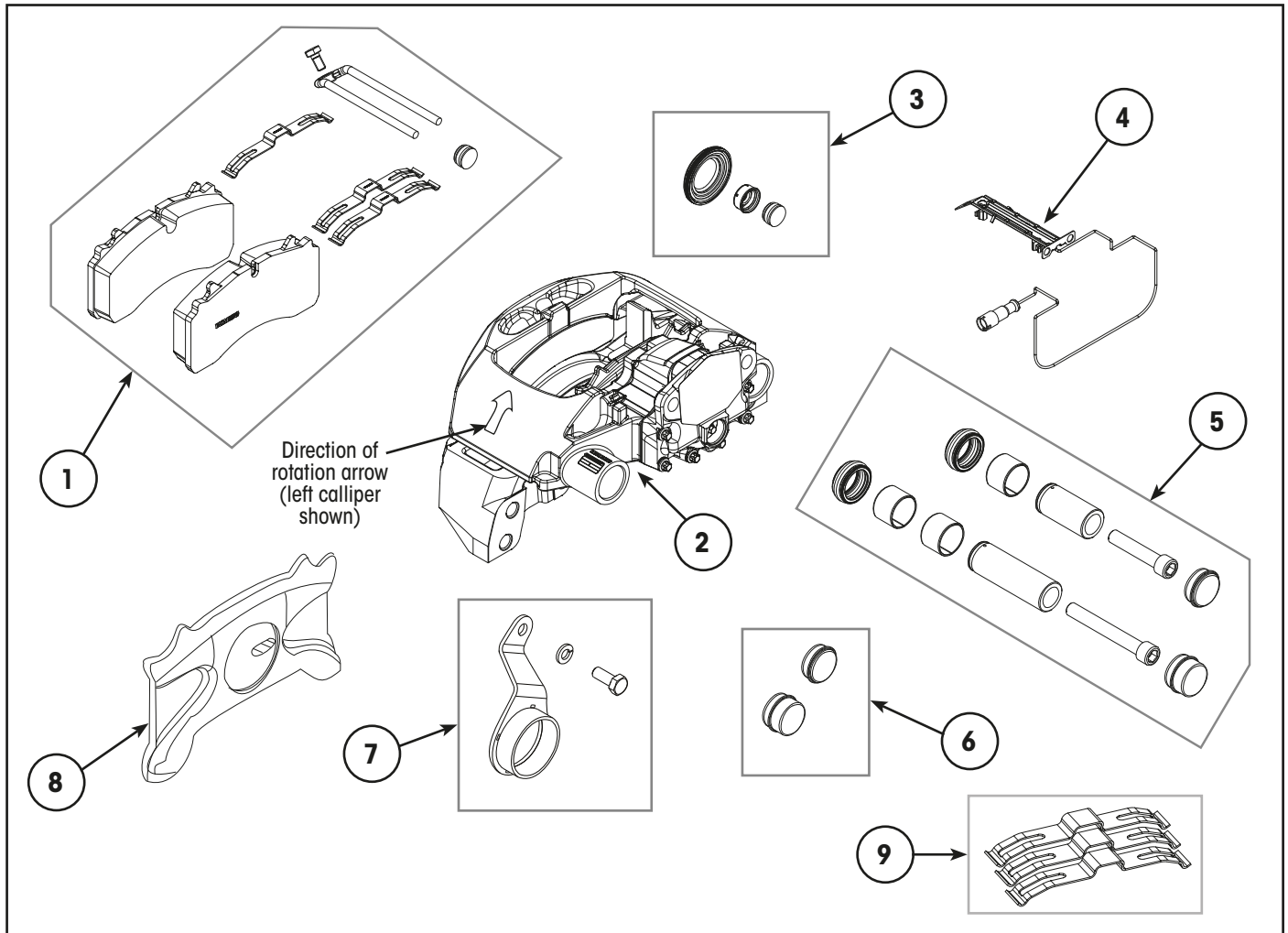
| Item | Part Number | Description | Qty | Notes |
|------|--------------|---|-----|---|
| 1 | S-28570-4350 | Kit, Dust Shield Clamp On Type. | 2 | Suits 127 mm (5") axle. Includes clamp. |
| | S-28570-4357 | Kit, Dust Shield Clamp On Type. | 2 | Suits 146 mm (5.75") axle. Includes clamp. |
| 2 | S-36224-4430 | Kit, Dust Shield – Bolt-On Disc Brake | 2 | Bolt on type. Includes fastener bolts & washers. |
| 3 | B-36165 | Bush, ABS Sensor Mounting | 2 | Suits 146 mm (5.75") axle. |
| 4 | 98814-004 | Bracket, ABS Sensor Mounting – Pressed | 2 | [1] Suits 127 mm (5") axle with Toowoomba iron hub. |
| | 98814-005 | Bracket, ABS Sensor Mounting – Pressed | 2 | Suits 127 mm (5") axle with Alloy hub. |
| | S-28757 | Bracket, ABS Sensor Mounting – Cast | 2 | Suits 146 mm (5.75") LDA axle. |
| 5 | 99008-001 | Clip, Retaining – ABS Sensor | 2 | |
| 6 | 98831-001 | Sensor, Straight ABS with 1.7m lead | 2 | Suits all except below. |
| | A-23619-3 | Sensor, 90-Degree ABS with 1.7m lead | 2 | Suits trailer disc steerable. |
| 7 | 98881-105 | Kit, Bolt & Washer Calliper to Axle – M20 x 2.5 | 2 | Suits all except below. |
| | 98881-110 | Kit, Bolt & Washer Calliper to Axle – M20 x 2.5 | 2 | Suit trailer disc steerable. |
| 8 | — | ABS Tone Ring | 2 | Refer to "ABS Tone Rings – 430 mm" on page 27. |
| 9 | 98815-031 | ConMet Offset Rotor Assembly, 430 mm | 2 | [2] Includes ABS Ring & Hardware. Not illustrated. |
| | 98815-033 | KIC Rotor Kit, 430 mm | 2 | Includes items 8 & 10. Rotor is part of item 11. |
| | 98815-026 | KIC Rotor Kit, 430 mm for Toowoomba iron hub | 2 | [1] Includes items 4, 8 & 10. Rotor is part of item 11. |
| 10 | NSS | Nut, ConMet Hub to Rotor. 5/8"-18 UNF | 20 | [2] Suits ConMet rotor. Use item 9. Not illustrated. |
| | 98881-108 | Kit, Bolt & Washer Hub to Rotor – Zinc M16 x 2 | 2 | Suits KIC rotor. Incl. 10 bolts & instructions. Not illustrated. |
| 11 | 98801-076 | Hub & Rotor Assembly – ConMet HN PreSet | 2 | [2] [3] Inc. bearings, spacer & seal. Not illustrated. |
| | 98818-069 | Hub & Rotor Assembly, 430 Rotor & HXL7® | 2 | [3] Incl. HXL7 hub, 430 mm rotor & hardware only. Not ill. |

[1] NOTE: Kit services HP 430 disc Toowoomba hubs. Refer to "Toowoomba Iron Hub Rotor Kit" on page 17.

[2] NOTE: For ConMet brake rotor identification, refer to "ConMet Brake Rotor Identification" on page 16.

[3] NOTE: Refer to Hendrickson [parts bulletin 97114-100](#) for more details regarding hub assemblies and components.

WABCO HTD-430™ CALLIPER – 22.5 [CTA-044548 SARN 44548 FB]



| Item | Part Number | Description | Qty | Notes |
|------|-------------|---|-----|---|
| 1 | D-32676-1 | Brake Pad Kit | 1 | Includes pad retaining hardware. |
| 2 | D-31346-1L | Calliper Assembly, LH | 1 | [1] Calliper and pad assembly. |
| | D-31346-1R | Calliper Assembly, RH | 1 | |
| 3 | D-32676-3 | Repair Kit, Calliper Piston Seal | 2 | Single calliper Kit. |
| 4 | D-32676-2 | Repair Kit, Pad Wear Indicator | 1 | |
| 5 | D-32676-15 | Repair Kit, Calliper Guide Pin and Bush | 2 | [2] Single calliper Kit. |
| 6 | 98881-040 | Kit, Calliper Cap – Heavy Duty | 1 | Includes LH & RH side. Cannot be used with guide pin cover, item 7. |
| 7 | 97802-001 | Kit, Calliper Guide Pin Cover | 1 | Includes LH & RH side. |
| 8 | 97097-027 | Pressure Plate, Brake Pad | 1 | Includes LH & RH side. |
| 9 | S-40670/2 | Kit, Brake Pad Clip – Heavy Duty | 2 | Includes 3 heavy duty pad clips. |

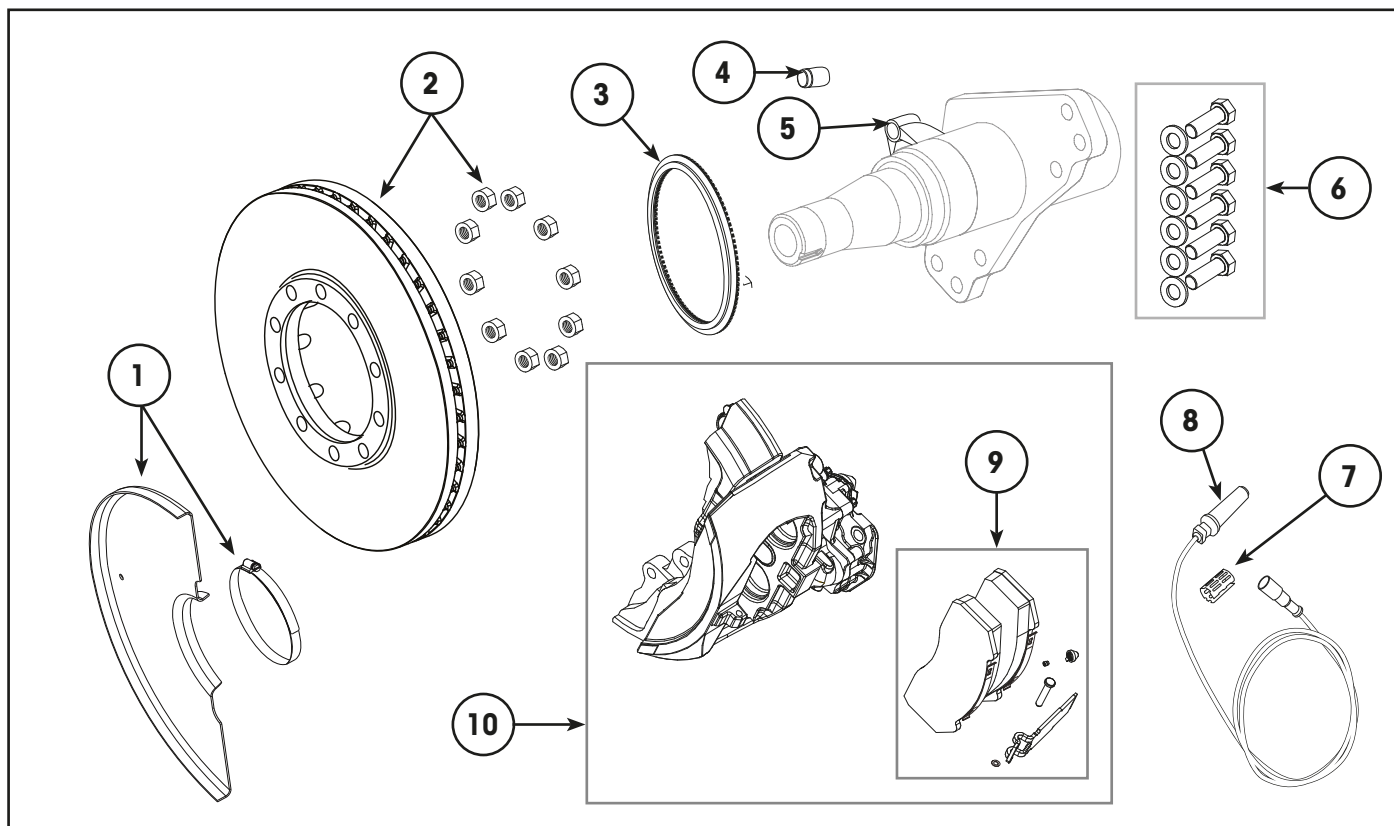
[1] NOTE: Brake calliper assemblies include brake pads, pad retaining hardware and pressure plate, items 1, 3, 5 & 8. They do not include the wear indicators or guide pin covers, items 4 & 7.

[2] NOTE: The calliper guide pin and bush kit (item 5) includes standard calliper caps.



KNORR-BREMSE HTD-430™ SYSTEM – 22.5 [SARN 29348 FB]

430 mm Rotor

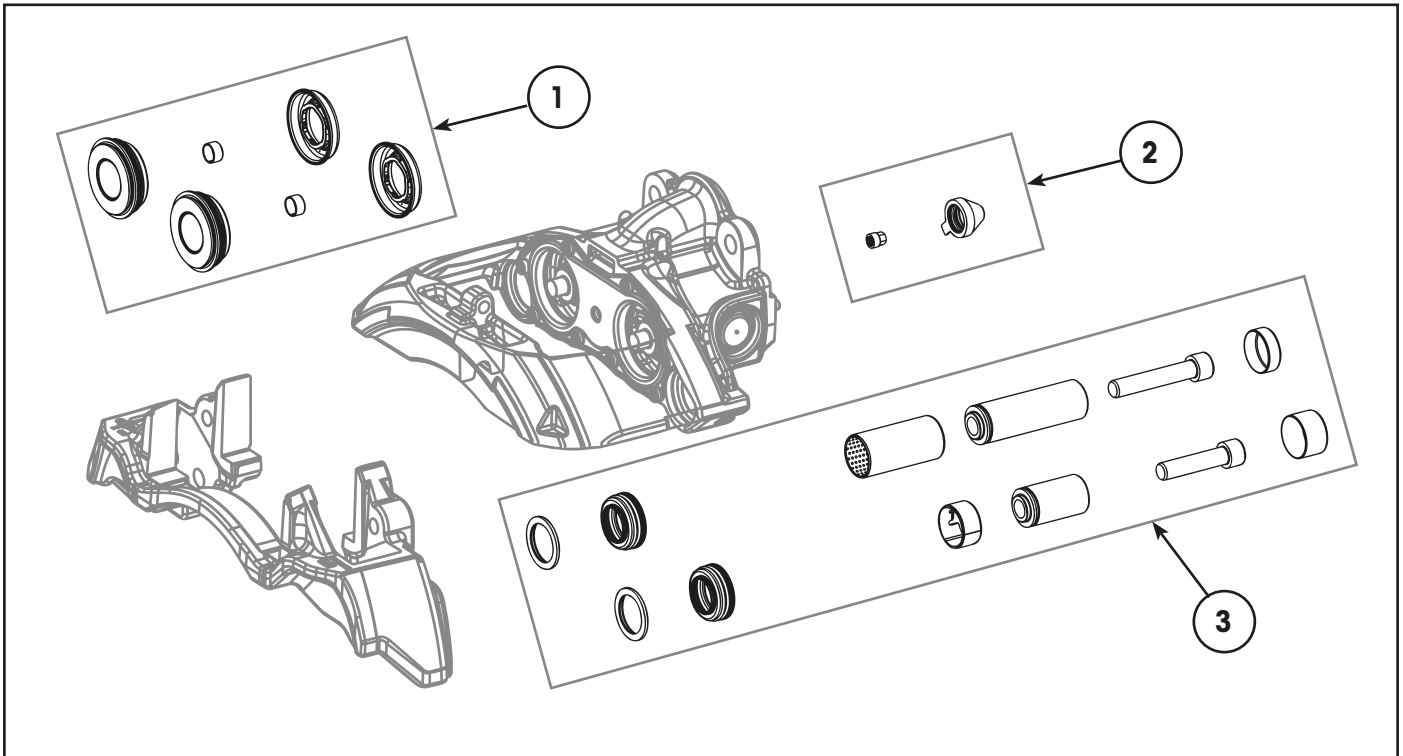


| Item | Part Number | Description | Qty | Notes |
|------|--------------|---|-----|---|
| 1 | S-28570-4350 | Kit, Dust Shield – Disc Brake | 2 | Suits 127 mm (5") axle. Includes clamp. |
| | S-28570-4357 | Kit, Dust Shield – Disc Brake | 2 | Suits 146 mm (5.75") axle. Includes clamp. |
| 2 | 98815-031 | ConMet Offset Rotor Assembly, 430 mm | 2 | [2] Includes ABS Ring & Hardware. |
| 3 | — | ABS Tone Ring | 2 | Refer to "ABS Tone Rings – 430 mm" on page 27. |
| 4 | B-36165 | Bush, ABS Sensor Mounting | 2 | Suits 146 mm (5.75") Axle. |
| 5 | 98814-004 | Bracket, ABS Sensor Mounting – Pressed | 2 | [1] Suits 127 mm (5") axle & Toowoomba iron hub. |
| | 98814-005 | Bracket, ABS Sensor Mounting – Pressed | 2 | Suits 127 mm (5") axle with Alloy hub. |
| | S-28757 | Bracket, ABS Sensor Mounting – Cast | 2 | Suits 146 mm (5.75") LDA axle. |
| 6 | 98881-105 | Kit, Bolt & Washer Calliper to Axle – M20 x 2.5 | 2 | |
| 7 | 99008-001 | Clip, Retaining – ABS Sensor | 2 | |
| 8 | 98831-001 | Sensor, Straight ABS with 1.7m lead | 1 | |
| 9 | 98881-005 | Brake Pad Kit | 1 | Includes adjuster plug, nut & retainer hardware. |
| 10 | NLA | Calliper Assembly, SB7 | – | Use updated SN7 replacement calliper. |
| | 97097-017 | Calliper Assembly, LH – SN7 | 1 | |
| | 97097-018 | Calliper Assembly, RH – SN7 | 1 | |
| 11 | 98801-076 | Hub & Rotor Assembly – ConMet HN PreSet. Not Illustrated. | 2 | [2] [3] Inc. bearings, spacer & seal. Circlip style ABS. |

[1] NOTE: Kit services HP 430 disc & Toowoomba hubs. Refer to "Toowoomba Iron Hub Rotor Kit" on page 17.

[2] NOTE: For ConMet brake rotor identification, refer to "ConMet Brake Rotor Identification" on page 16.

[3] NOTE: Refer to Hendrickson [parts bulletin 97114-100](#) for more details regarding hub assemblies and components.

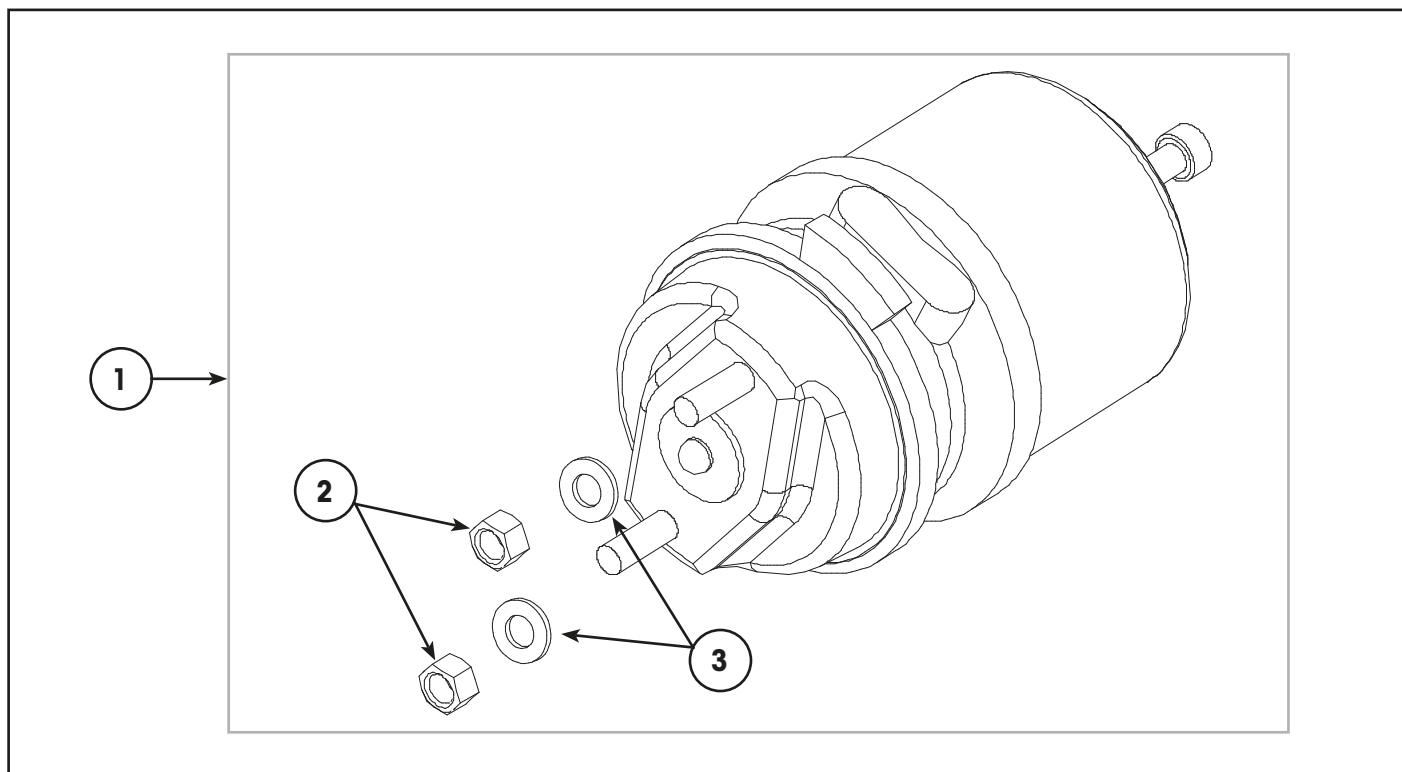
KNORR-BREMSE HTD-430™ CALLIPER – 22.5 [SARN 29348 FB]


| Item | Part Number | Description | Qty | Notes |
|------|-------------|---|-----|--------------------------------------|
| 1 | 97097-003 | Calliper Tappet Kit | 2 | SB7. |
| | 97097-009 | Calliper Tappet Kit | 2 | SN7. |
| 2 | 97097-006 | Calliper Adjuster Kit | AR | Qty 10. Includes cap and nut. |
| 3 | 97097-011 | Calliper Slide Rebuild Kit | 2 | SB7. |
| | 97097-013 | Calliper Slide Rebuild Kit – Heavy Duty | 2 | [1] SN7. |
| 4 | 98793-004 | Grease, Synthetic – Calliper Slide | 4 | Not illustrated. Included in item 3. |

[1] NOTE: Hendrickson recommends the use of 97097-013 (heavy duty calliper slide rebuild kit, item 3) for all SN7 calliper slide bush replacements.

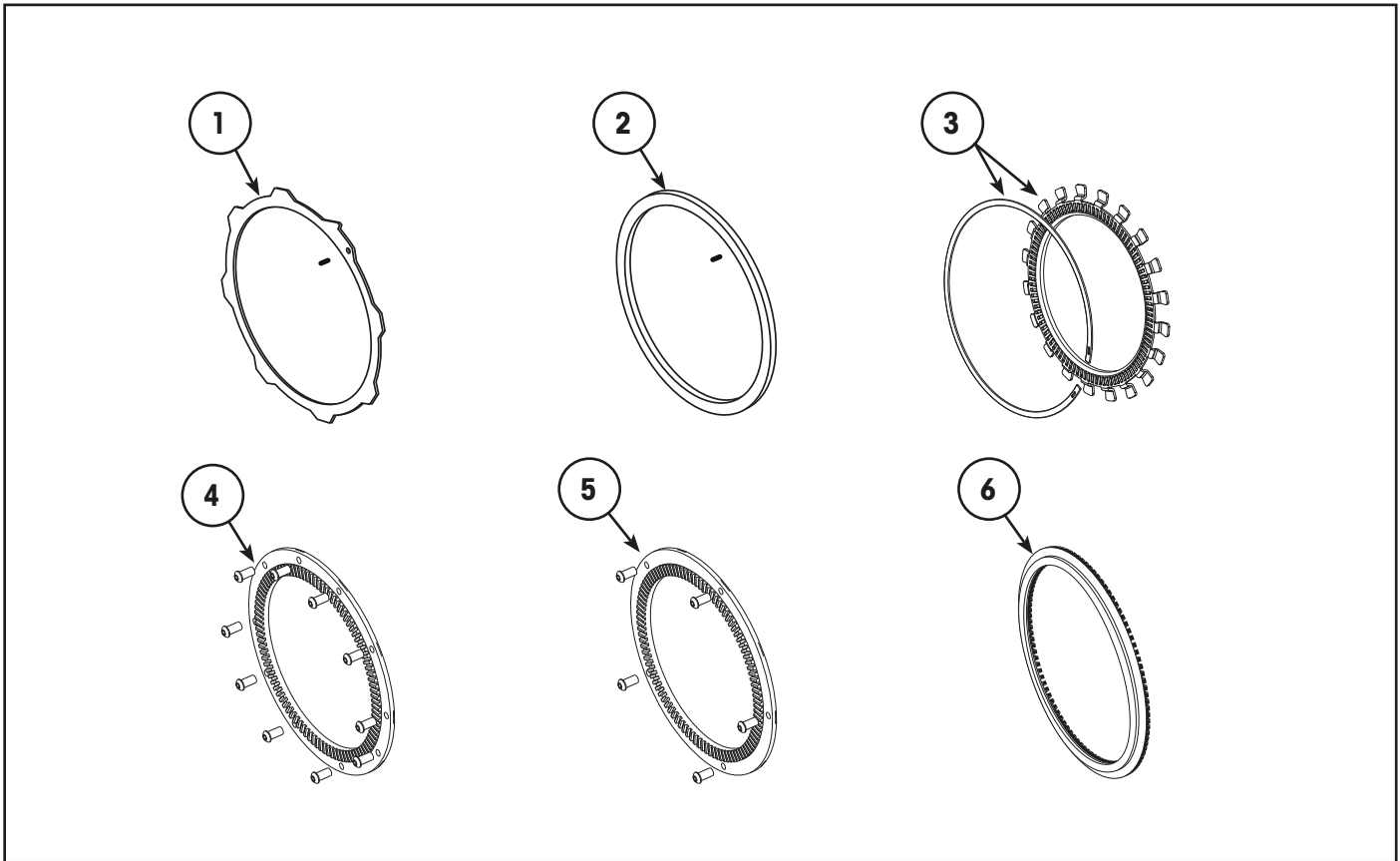


DISC BRAKE CHAMBERS



| Item | Part Number | DDSB Terminology | Piston Terminology | Replaces Part Number | Qty | Notes | |
|------|-------------|------------------------------------|--------------------|----------------------|-----|------------|---------------------|
| 1 | 98832-022 | 12 | | | 2 | 0° port. | |
| | 98832-107 | 14 | | | 2 | 0° port. | |
| | 98832-021 | 16 | | | 2 | 0° port. | |
| | S-40882-U | 18 | | C-38265-U | 2 | 180° port. | |
| | 98832-108 | 20 | | | 2 | 0° port. | |
| | 98832-109 | 22 | | 98832-033 | 2 | 0° port. | |
| | 98832-110 | 24 | | 98832-055 | 2 | 0° port. | |
| | 98832-115 | 12/24 | 12/16 | 98832-020 | 2 | 0° port. | |
| | 98832-122 | 14/24 | 14/16 | | 2 | 0° port. | |
| | 98832-130 | 14/30 | 14/24 | 98832-030, 98832-031 | 2 | 0° port. | |
| | 98832-114 | 16/24 | 16/16 | 98832-017 | 2 | 0° port. | |
| | 98832-113 | 16/30 | 16/24 | S-26927-1 | 2 | 0° port. | |
| | S-40881-L | 18/24 | 18/16 | S-38264-L | 2 | 135° port. | |
| | S-40881-R | 18/24 | 18/16 | S-38264-R | 2 | 45° port. | |
| | S-40885-U | 20/24 | | C-38779-U | 2 | 180° port. | |
| 2 | 73433-008 | Nut, Conelock – M16 x 1.5 Class 10 | | | | | Included in item 1. |
| 3 | 97022-001 | Washer, Hardened – M16 | | | | | Included in item 1. |

ABS TONE RINGS – 430 MM



| Item | Part Number | Description | Qty | Notes |
|------|-------------|---|-----|--|
| 1 | 98814-017 | Kit, Tabbed ABS Tone Ring & Locking Pin | 2 | KIC rotor with tabbed tone ring, 2013 to 2020. |
| 2 | NLA | Kit, Threaded ABS Tone Ring & Locking Pin | 2 | [1] KIC rotor with threaded tone ring, from 2020. |
| 3 | 98814-026 | ConMet ABS Tone Ring Kit – From 2019 | 2 | [2] ConMet rotors. Locking circlip style. Includes circlip. |
| 4 | 98814-025 | ConMet ABS Tone Ring Kit – Early Up To 2018 | 2 | [2] ConMet rotors. 10-bolt style. |
| 5 | 98814-024 | ConMet ABS Tone Ring Kit – 2018 To 2019 | 2 | [2] ConMet rotors. 5-bolt style. |
| 6 | 98814-013 | ABS Tone Ring – Toowoomba Hub | 2 | [3] Suits Toowoomba hub. |

[1] NOTE: Tone rings not available from supplier and must be replaced with complete rotor assemblies.

[2] NOTE: For ConMet brake rotor identification, refer to “ConMet Brake Rotor Identification” on page 16.

[3] NOTE: For more details regarding Toowoomba hubs refer to “Toowoomba Iron Hub Rotor Kit” on page 17.

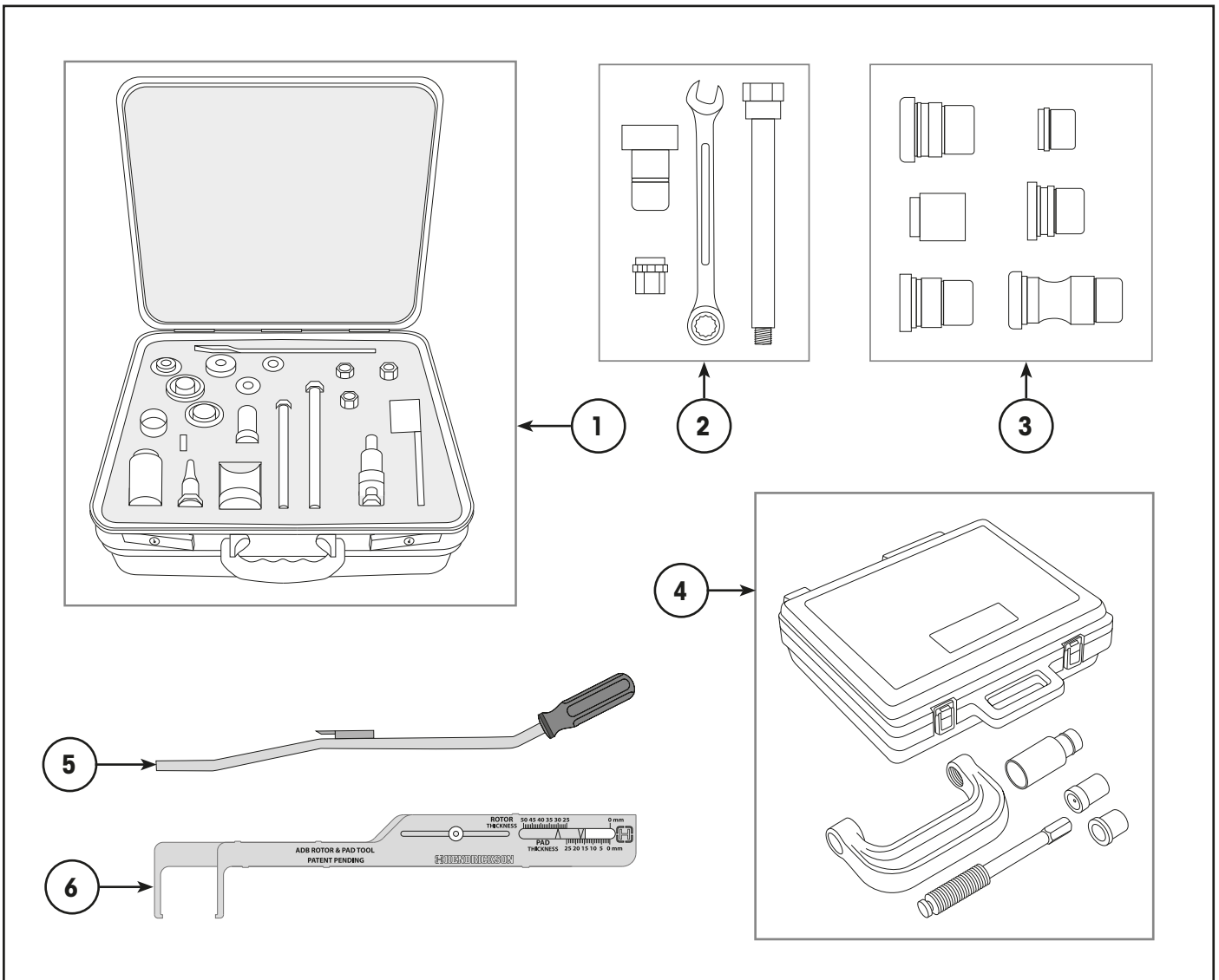
ABS PULSE RING NOTE:

ABS pulse rings that are attached to wheel end hubs vary according to hub type and design. Therefore, hub-attached tone rings are listed in the Hendrickson Wheel End [Parts List 97114-100](#), along with other wheel end components.



This page intentionally left blank

SPECIAL TOOLS



| Item | Part Number | Description | Notes |
|------|-------------|---------------------------------------|---|
| 1 | 97097-012 | Tool Kit – Calliper Rebuild, Complete | Suits Knorr-Bremse SB7 & SN7. |
| 2 | 98596-023 | Tool Kit – Calliper Rebuild, Basic | [1] Suits MAXX22T HTD-415™ & WABCO HTD-377™ & HTD-430™. Must be used along with an adaptor kit. |
| 3 | 98596-024 | Tool Kit – Calliper Rebuild, Adaptors | [1] Suits WABCO HTD-377 & HTD-430. To be used with item 2. |
| | S-35303-6 | Tool Kit – Calliper Rebuild, Adaptors | [1] Suits MAXX22T HTD-415. To be used with item 2. |
| 4 | 98596-032 | Brake Anchor Pin Tool | Remove & replace brake anchor pins & bushes. |
| 5 | 98596-033 | S-Cam Brake Spring Tool | |
| 6 | S-37430 | Air Disc Brake Wear Indicator Tool | Measures pad & disc thickness without removing wheels. |

[1] NOTE: The calliper rebuild adaptor tool kits to suit WABCO HTD disc brake callipers (98596-024 or S-35303-6), must be used in conjunction with calliper rebuild basic tool kit (98596-023).



REVISIONS TABLE

| DATE | REV | PAGE | DESCRIPTION |
|----------|-----|------------------|--|
| Jul-2021 | M | 20, 21 | Update MAXX22T HTD-415™ calliper kits & hardware, ECN 11699 & 11798. |
| Jul-2021 | M | 22, 24, 27 | Update ABS Tone rings onto new page, ECN 11774. |
| Jul-2021 | M | 14 | Add offset brake adjusters to suit CONNEX™ ST Underslung, ECN 11817. |
| Jul-2021 | M | 12, 13 | Update brake chambers, 11815 & 11826. |
| Jul-2021 | M | 5 | Add 15" x 8-5/8" brake drum. |
| Jul-2021 | M | 26 | Add S-38264-L/R disc brake chamber, ECN 11748. |
| Jul-2021 | M | 7 | Correct P-brake shoe quantity & hardware part number.. |
| Jul-2021 | M | 18,20,22,24 | Add rotor & hardware kits, ECN 11861. |
| Jul-2021 | M | 21, 23 | Add heavy duty pad clips, ECN 11861 |
| Dec-2022 | N | 5 | Remove standard shoes which are NLA. |
| Dec-2022 | N | 26 | Update brake chamber numbers, ECN 11815, 11897. |
| Dec-2022 | N | 5, 7, 18, 20, 22 | Add CTA approval numbers, ECN 11900, 11902. |
| Dec-2022 | N | 27 | Threaded ABS ring NLA, ECN 11906. |
| Dec-2022 | N | 22, 18 | Update calliper bolt kits and ABS sensors, ECN 11903. |
| Dec-2022 | N | 15, 16, 17 | Expand and enhance calliper identification. |
| | | | |

Trademarks: CONNEX™, Hendrickson Extended Service™, HTD-377™, HTD-415™, HTD-430™, HUS™, HXL7®, HXL5®, HXL™, HXS™, INTRAAX®, TRLAXLE® are trademarks or registered trademarks of Hendrickson USA, L.L.C. Other product and company names used in this publication are trademarks™ or registered® trademarks of their respective holders. Use of them does not imply any affiliation with or endorsement by them.

Copyright: This publication is copyright and no part may be reproduced without the written permission of Hendrickson USA L.L.C.

Actual product performance may vary depending upon vehicle configuration, operation, service and other factors.

All applications must comply with applicable Hendrickson specifications and must be approved by the respective vehicle manufacturer with the vehicle in its original, as-built configuration. Contact Hendrickson for additional details regarding specifications, applications, capacities, and operation, service and maintenance instructions.

Need Help? Australia Call +61 3 8792 3600 or Email customerservice@hendrickson.com.au

New Zealand Call +64 9 570 4721 or Email nz-customerservice@hendrickson.co.nz



HENDRICKSON ASIA PACIFIC PTY LTD
 ABN 21 004 992 769
 32- 44 Letcon Drive, P.O. Box 1063
 Dandenong, Victoria, 3175
 61.3.8792.3600 • Fax 61.3.8792.3699

HENDRICKSON NEW ZEALAND
 Unit P, 24 Allright Place
 Mt Wellington, Auckland, 1060
 64.9.570.4721 • Fax 64.9.570.4816

www.hendrickson.com.au