

# **H PARTS LIST**

## **STEERTEK™ NXT High Capacity Steer Axle System for Ferrara Fire/Rescue Vehicles**

LIT NO: SP-335

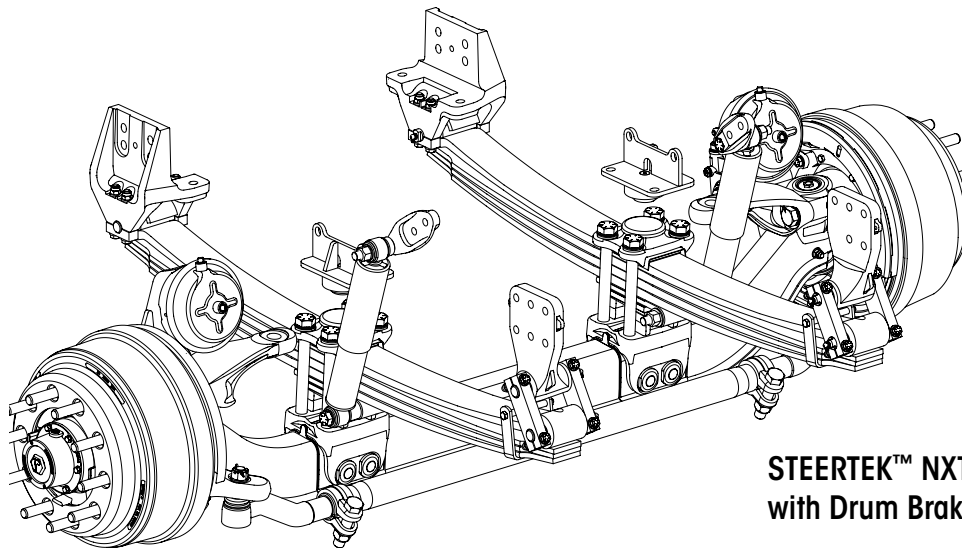
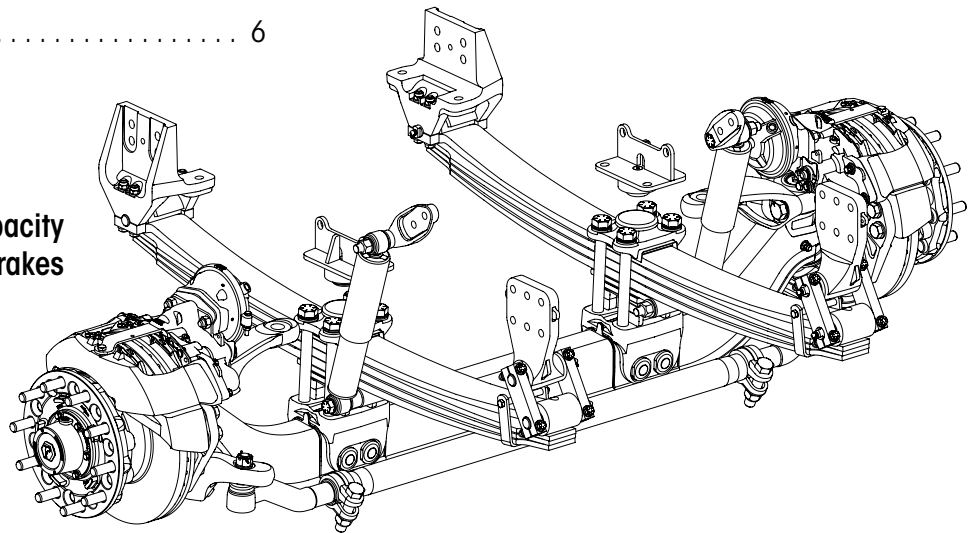
DATE: August 2023

REVISION: C

### **CONTENTS**

<b>DESCRIPTION</b>	<b>PAGE</b>
Parts Lists	
■ Suspension • Axle • Clamp Group Assembly . . . 2	
■ Disc Brake Assembly . . . . . 4	
■ Drum Brake Assembly . . . . . 5	
Selection Guides . . . . . 6	

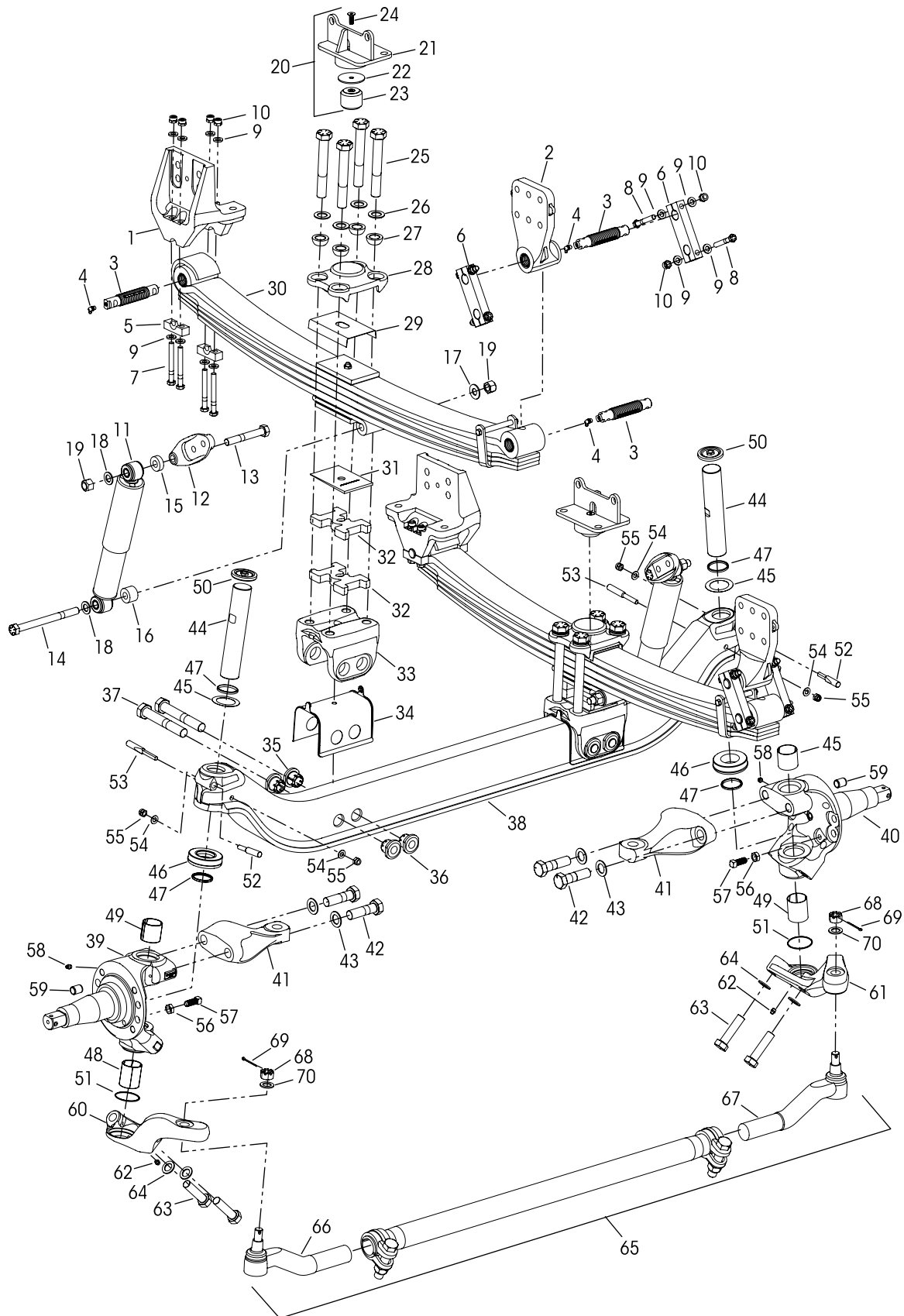
**STEERTEK™ NXT High Capacity  
with Air Disc Brakes**



**STEERTEK™ NXT High Capacity  
with Drum Brakes**



Suspension • Clamp Group • Axle Assembly





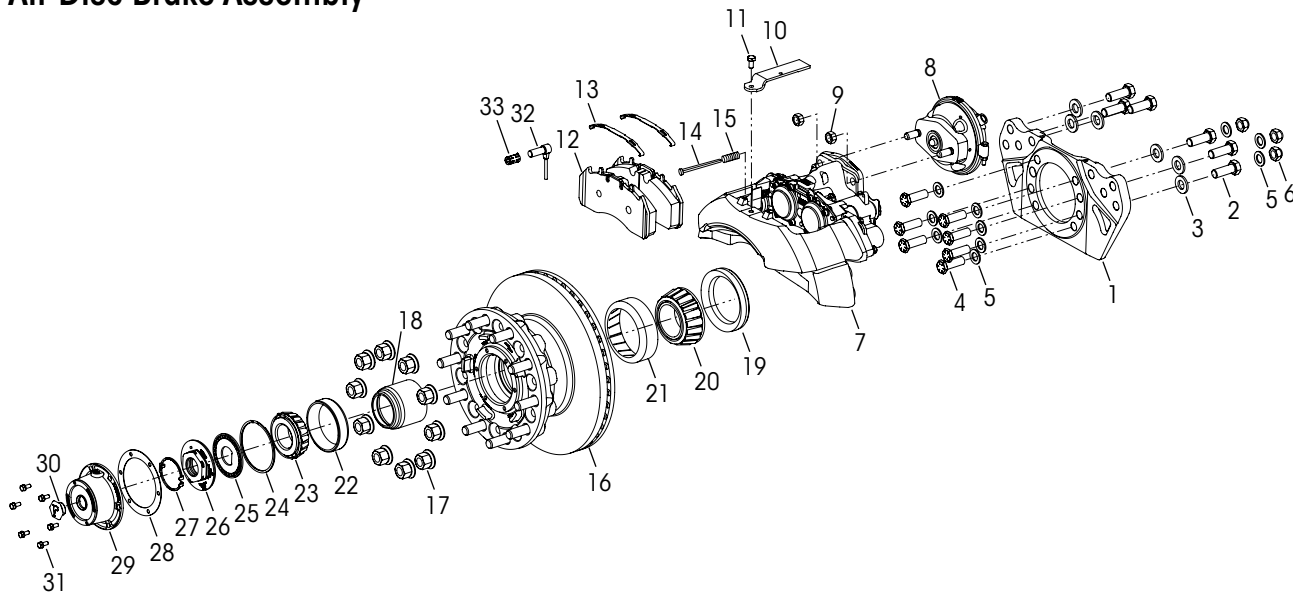
# STEERTEK™ NXT High Capacity Steer Axle System for Ferrara Vehicles

KEY NO.	PART NO.	DESCRIPTION	VEHICLE QTY.	KEY NO.	PART NO.	DESCRIPTION	VEHICLE QTY.
1	79894-004	Frame Hanger Assembly Front	2	35		*Axle Collar Non Threaded	4
2	80159-003	Rear with Bushing	2	36		Threaded	4
		<b>Frame Hanger Fastener Service Kit, One Side</b>		37		*1"-8 UNC x 6½" Hex Thru Bolt	4
	34013-247	Front, Includes Key Nos. 5, 7, 9-10		38	91844-XXX	STEERTEK NXT Axle Fire and Rescue, Includes Key Nos. 39-70, <i>See Table 1 on Page 6</i>	1
	34013-248	Rear, Includes Key Nos. 3-4, 6, 8-10				Knuckle Assembly, Includes Key Nos. 47, 56-59	
	34013-249	<b>Single Threaded Pin and Grease Zerk Service Kit, Includes Key Nos. 3-4</b>		39	77243-001	Left Hand	1
3		*Threaded Pin	6	40	77243-002	Right Hand	1
4		*Grease Zerk	6	41	77337-003	Steering Arm, <i>Replaces 79685-003</i>	2
5	79843-000	Front Hanger Bottom Cap	4	42	30550-027	1"-14 UNF x 3½" Hex Bolt	4
6	79888-001	Rear Shackles	4	43	22962-051	1" Flat Washer	4
7	80362-001	½"-20 UNC x 4½" Hex Bolt	8		34013-230	<b>Kingpin Service Kit, One Side</b> Includes Key Nos. 44, 45a, 46-55, 63-64	
8	80362-002	½"-20 UNC x 3¼" Shackle Hex Bolt	8	44		*Kingpin	2
9	22962-014	½" Flat Washer	32	45		Kingpin Shim (As needed for service)	2
10	17700-034	½"-20 UNC Locknut	16	a	77241-002	0.01" Thickness	
11	80606-001L	Shock Absorber	2	b	77241-003	0.02" Thickness	
12	78250-002	Shock Bracket	2	46	75918-001	Thrust Bearing	2
13	50764-008	¾"-10 UNC x 5" Upper Shock Hex Bolt	2	47	75966-001	Kingpin Seal	4
14	50764-014	¾"-10 UNC x 8½" Lower Shock Hex Bolt	2			Kingpin Bushing	
		Shock Spacer		48	75919-001	Lower, 2½" Length	2
15	59946-006	Upper, 13.2 mm Thick	2	49	75919-002	Upper, 2" Length	2
16	59946-015	Lower Outboard, 28 mm Thick	2	50	77209-001	Grease Cap	2
17	59946-005	Lower Inboard, 3 mm Thick	2	51	68303-004	O-Ring	2
18	22962-001	¾" Flat Washer	4			Kingpin Draw Key	
19	49842-000	¾"-10 UNC Locknut	4	52	75925-001	Upper, 3¾" Length	2
20		Jounce Stop Assembly, Includes Key Nos. 21-24		53	75925-002	Lower, 4¾" Length	2
	79855-000	Left Hand	1	54	22962-054	7/16" Flat Washer	4
	79854-000	Right Hand	1	55	17700-008	7/16"-14 UNC-2B Nut	4
21		*Jounce Stop	2	56	17491-023	5/8"-11 UNC-2B Jam Nut	2
22		*Spacer	2	57	93334-001	5/8"-11 UNC x 1½" Set Screw, <i>Replaces 80183-000</i>	2
	34013-505	<b>Jounce Stop Service Kit, One Side,</b> Includes Key Nos. 23-24		58	33117-000	Grease Zerk	2
23		*Rubber Bump Stop	2	59	64246-000	ABS Sensor Sleeve	2
24		*M10 x 1.5 x 30 mm Flat Socket Cap Screw	2		77244-XXX	Tie Rod Arm Assembly, Includes Key No. 62 <i>See Table 1 on Page 6</i>	
	91843-XXX	Leaf Spring & Clamp Group Assembly, Includes Key Nos. 25-37, <i>See Table 2 on Page 6</i>	2	60		Left Hand	1
	34013-XXX	<b>Clamp Group Service Kit, One Side,</b> Includes Key Nos. 25-27 & 29, <i>See Table 2 on Page 6</i>		61		Right Hand	1
25	64107-XXX	1"-8 UNC Hex Bolt, <i>See Table 2 on Page 6</i>	8	62	33117-000	Grease Zerk	2
26	22962-051	1" Flat Washer ( <i>if equipped</i> ) <i>See Table 2 on Page 6</i>	8	63	30418-014	7/8"-14 UNF x 3½" Hex Bolt	4
27	78356-002	1" Spherical Washer	8	64	22962-002	7/8" Flat Washer	4
28	78888-000	Top Pad	2	65	79365-001	Tie Rod Assembly, 20K Drop, Includes Key Nos. 66-68	1
29	79273-001	Spring Liner	2			<b>Tie Rod End Service Kits,</b>	
30		Leaf Spring Assembly, <i>See Table 2 on Page 6</i>	2		60961-884	Axle Set, Includes Kit Nos. 60961-882 and -883	
31	80143-001	Caster Wedge - 2°	2		60961-882	Left Hand, Includes Key Nos. 66, 68-70	
32		Leaf Spring Spacer ( <i>if equipped</i> ) <i>See Table 2 on Page 6</i>	4		60961-883	Right Hand, Includes Key Nos. 67-70	
33	77232-000	Axle Seat	2			*Tie Rod End, Includes Key No. 68	
	34013-229	<b>Axle Clamp Collar Service Kit, One Side</b> Includes Key Nos. 34-37		66		Left Hand	1
34	78887-001	Axle Seat Liner	2	67		Right Hand	1
				68		*7/8"-14 UNF-2A Castle Nut	2
				69		*Cotter Pin	2
				70		*7/8" Flat Washer	2

**NOTE:** \* Item included in kit/assembly only, part not sold separately.



**Air Disc Brake Assembly**

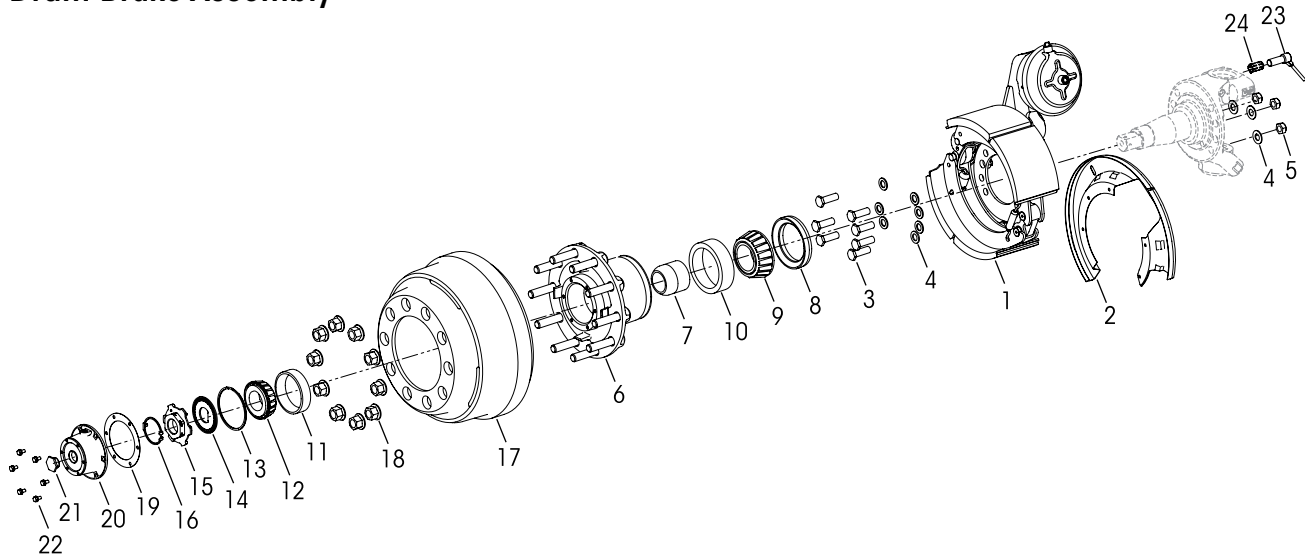


KEY NO.	PART NO.	DESCRIPTION	VEHICLE QTY.
1		*Meritor Torque Plate Assembly Left Hand, Part No. 3215-F-1878 Right Hand, Part No. 3215-E-1877	1 1
2	69781-002	M20 x 55 mm Hex Head Bolt	12
3	58246-018	M20 Flat Washer, <i>Replaces 58246-039</i>	12
4	80345-004	3/4"-16 UNC x 2 1/4" Low Profile Hex Head Bolt	14
5	22962-001	3/4" Flat Washer	20
6	80691-001	3/4"-16 UNC Hex Nut	6
7		*Meritor Air Disc Brake Caliper Assembly, Includes Key Nos. 10-11, 14-15 Left Hand, Part No. EX225H202XX000S Right Hand, Part No. EX225H201XX000S	1 1
8		*WABCO Air Brake Chamber MGM T24L, Includes K80131-001 Key No. 9 Left Hand, Part No. 423 506 1340 Right Hand, Part No. 423 506 1350	1 1
9		*Hex Nut *Meritor Disc Pad Retainer Kit No. 225281, Includes Key Nos. 10-11	4
10		*Pad Retainer	
11		*Pad Retainer Bolt *Meritor Air Disc Brake Pad Kit No. 2252H2CG, Includes Key Nos 12-13	
12		*Air Disc Brake Pad	
13		*ADB Pad Spring *Meritor Wear Indicator Kit No. 225224, Includes Key Nos. 14-15	
14		*Wear Indicator	
15		*Wear Indicator Spring	

KEY NO.	PART NO.	DESCRIPTION	VEHICLE QTY.
16		*Conmet Hub and Rotor Assembly Part No. 10083224, Includes Bearings and Seals *Conmet Brake Rotor Replacement Kit No. 10082181, One Wheel End, Includes Rotor and 10 of each Cap Screws and Washers	2
17		**M22 x 1.5 Two-piece Wheel Nut *Conmet Hub Bearing Rebuild Kit No. 10081728, One Wheel End, Includes Key Nos. 18-23 *Conmet Wheel Seal Kit No. 10081519, One Wheel End, Includes Key Nos. 18-19	20
18		*Bearing Spacer Part No. 10034342	
19		*Wheel Seal Part No. 10045883	
20		*Inner Bearing Cone Part No. 10041922	
21		*Inner Bearing Cup Part No. 10041921	
22		*Outer Bearing Cup Part No. 10041923	
23		*Outer Bearing Cone Part No. 10041924 *Conmet Preset Plus FL Nut Assembly Kit No. 10036550, Includes Key Nos. 24-27	
24		*Snap Ring - Double Wind Part No. 10033288	
25		*Spindle Nut Lockwasher Part No. 10031171	
26		*Outer Spindle Nut Part No. 10031170	
27		*Snap Ring Retainer Part No. 10031172	
28		*Drivparts Hub Cap Gasket No. G-3009	2
29		*Drivparts Hub Cap Part No. 343-009, Includes Key No. 30	2
30		*Rubber Plug	
31	64545-002	5/16"-18 UNC x 3/4" Hex Bolt with Retained Washer	12
32		*WABCO ABS Sensor Part No. 441-032-900-0	2
33	64550-000	ABS Sensor Clip	2



Drum Brake Assembly



KEY NO.	PART NO.	DESCRIPTION	VEHICLE QTY.	KEY NO.	PART NO.	DESCRIPTION	VEHICLE QTY.
1		*Meritor Drum Brake Foundation Kit, Includes Key No. 2 Left Hand, Part No. QP4-1656-2729 Right Hand, Part No. QP4-1656-2730	1 1	11		*Outer Bearing Cup Part No. 10041923	
2		*Dust Shield	2	12		*Outer Bearing Cone Part No. 10041924	
3	80345-004	3/4"-16 x 2 1/4" Low Profile Hex Head Bolt	14			*Conmet Preset Plus FL Nut Assembly Kit No. 10036550, Includes Key Nos. 13-16	
4	22962-001	3/4" Flat Washer	20	13		*Snap Ring - Double Wind Part No. 10033288	
5	80691-001	3/4"-16 UNC - 2B Nut	6	14		*Spindle Nut Lockwasher Part No. 10031171	
		*Conmet Preset Plus FL Hub Assembly Part No. 10081313, Includes Key Nos. 6-16	2	15		*Outer Spindle Nut Part No. 10031170	
6		*Hub Part No. 10033316		16		*Snap Ring Retainer Part No. 10031172	
		*Conmet Hub Bearing Rebuild Kit No. 10081728, One Wheel End, Includes Key Nos. 7-12		17		*Conmet Drum 16.5 x 6 Part No. 10033071	
		*Conmet Wheel Seal Kit No. 10081519, One Wheel End, Includes Key Nos. 7-8		18		**M22 x 1.5 Two-piece Wheel Nut	20
7		*Bearing Spacer Part No. 10034342		19		*Drivparts Hub Cap Gasket No. G-3009	2
8		*Wheel Seal Part No. 10045883		20		*Drivparts Hub Cap Part No. 343-009, Includes Key No. 21	2
9		*Inner Bearing Cone Part No. 10041922		21		*Rubber Plug	
10		*Inner Bearing Cup Part No. 10041921		22	64545-002	5/16"-18 UNC x 3/4" Hex Bolt with Retained Washer	12
				23		*WABCO ABS Sensor Part No. 441-032-900-0	2
				24	64550-000	ABS Sensor Clip	2

**NOTES:** \* Part not supplied by Hendrickson for aftermarket service purposes. Description and part number listed for reference only. For more information and assistance with service, maintenance, and rebuild instructions on these components see following component manufacturers:

- CONMET technical and parts support 800.547.9473 or online [aftermarket.conmetwheelends.com/hub-selection](http://aftermarket.conmetwheelends.com/hub-selection)
- DRIVPARTS technical and parts support 800.334.3210 or online [www.drivparts.com](http://www.drivparts.com)
- MERITOR technical and parts support 888.725.9355, or online for parts: [www.meritorpartsexpress.com](http://www.meritorpartsexpress.com) and for technical support: [www.meritorbullpen.com](http://www.meritorbullpen.com)
- WABCO technical and parts support 855.228.3203 or online [www.wabco-customercentre.com](http://www.wabco-customercentre.com)

\*\* Not supplied by Hendrickson, used for reference only. Contact the vehicle manufacturer for more information.



## ■ Selection Guides

**Table 1 Axle and Tie Rod Arm Assembly**

Wheelbase	STEERTEK NXT Axle	Tie Rod Arm Assembly Part No.	
	Assembly Part No. Key No. 38	Left Hand Key No. 60	Right Hand Key No. 61
140-170"	91844-002	77244-057	77244-058
171-200"	91844-004	77244-059	77244-060
201-230"	91844-006	77244-061	77244-062
231-270"	91844-008	77244-063	77244-064

**Table 2 Leaf Spring Assembly and Components**

Capacity	Ride Height	Leaf Spring and Clamp Group Assembly	Clamp Group Service Kit No.	Leaf Spring Assembly Key No. 30	1" Hex Bolt Key No. 25		Washer Key No. 26	Leaf Spring Spacer Key No. 32		
					Part No.	Length		Part No.	Part No.	Qty
18K	8"	91843-001	34013-278	82378-150	7"	64107-002	N/A	N/A		
	9"	91843-002	34013-397		8"	64107-001		1	1"	79814-000
	10"	91843-003	34013-312		9"	64107-003		2		
20K	8"	91843-101	34013-278	82379-150	7"	64107-002	N/A	N/A		
	9"	91843-102	34013-397		8"	64107-001		1	1"	79814-000
	10"	91843-103	34013-312		9"	64107-003		2		
22K	8"	91843-201	34013-278	82380-150	7"	64107-002	N/A	N/A		
	9"	91843-202	34013-397		8"	64107-001		1	1"	79814-000
	10"	91843-203	34013-312		9"	64107-003		2		
24K	8"	91843-301	34013-254	82380-151	7.5"	64107-000	22962-051	N/A		
	9"	91843-302	34013-255		8.5"	64107-006		1	1"	79814-000
	10"	91843-303	34013-314		9.5"	64107-007		2		



### WARNING

USE 1" FLAT WASHERS (PART NO. 22962-051) ONLY AS SPECIFIED IN TABLE 2 (LEAF SPRING AND CLAMP GROUP ASSEMBLY). THE TABLE LISTS DIFFERENT CONFIGURATIONS FOR THIS ASSEMBLY. FOR CERTAIN CONFIGURATIONS THE CLAMP GROUP REQUIRES THE USE OF 1" FLAT WASHERS (PART NO. 22962-051) WITH THE SPECIFIED 1" HEX BOLT LENGTH, BUT NOT IN OTHER CONFIGURATION SPECIFICATIONS IN TABLE 2 CAN RESULT IN IMPROPER CLAMP FORCE IN THE LEAF SPRING AND CLAMP GROUP ASSEMBLY, IMPROPER SEATING AND COMPONENT DAMAGE, WHICH CAN CAUSE LOSS OF VEHICLE CONTROL, ADVERSE VEHICLE HANDLING, PROPERTY DAMAGE AND PERSONAL INJURY.

This is a general parts list to provide directional information. Components may vary by model. Questions in regards to parts, contact Hendrickson Truck Parts at 1.866.755.5968 (Toll-free U.S. and Canada), 630.910.2800 (Outside U.S. and Canada) or email: truckparts@hendrickson-intl.com during normal office hours. Actual product performance may vary depending upon vehicle configuration, operation, service and other factors. All applications must comply with applicable Hendrickson specifications and must be approved by the respective vehicle manufacturer with the vehicle in its original, as-built configuration. Contact Hendrickson for additional details regarding specifications, applications, capacities, and operation, service and maintenance instructions.

Call Hendrickson at **1.866.755.5968** (toll-free) or **1.630.910.2800** for additional information.



www.hendrickson-intl.com

**TRUCK COMMERCIAL VEHICLE SYSTEMS**  
 800 South Frontage Road  
 Woodridge, IL 60517-4904 USA  
 1.866.755.5968 (Toll-free U.S. and Canada)  
 1.630.910.2800 (Outside U.S. and Canada)  
 Fax 1.630.910.2899

SP-335 Rev C 08-23

© 2020 – 2023 Hendrickson USA, L.L.C. All Rights Reserved. All trademarks shown are owned by Hendrickson USA, L.L.C., or one of the affiliates, in one or more countries.

Information contained in this literature was accurate at the time of publication. Product changes may have been made after the copyright date that are not reflected.

Printed in United States of America