

PARTS LIST

HN® Rear Suspension VariRate® Spring System

LIT NO: SP-212

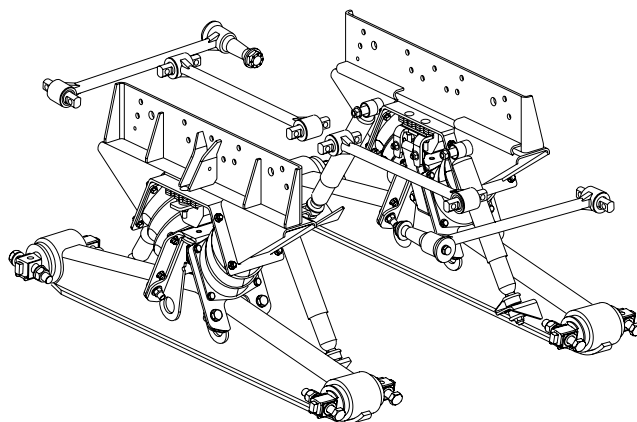
DATE: September 2015

REVISION: F

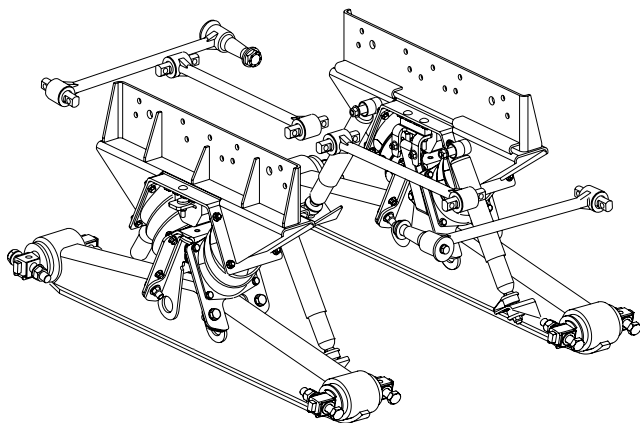
CONTENTS

DESCRIPTION	PAGE
Parts Lists	
■ HN 402/462/522 - 11/00 - Current.	2
■ HN 402/462/522 - 9/98-11/00	4
■ HN 402/462/522 - 4/96-8/98.	6
Special Tools	8
Notes	8

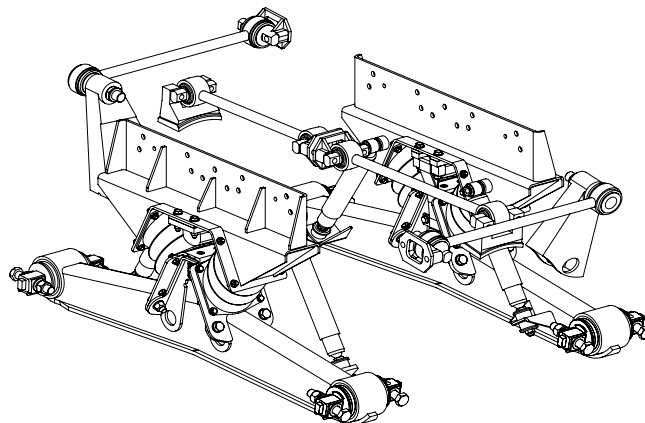
HN 402/462/522 - 11/00–Current



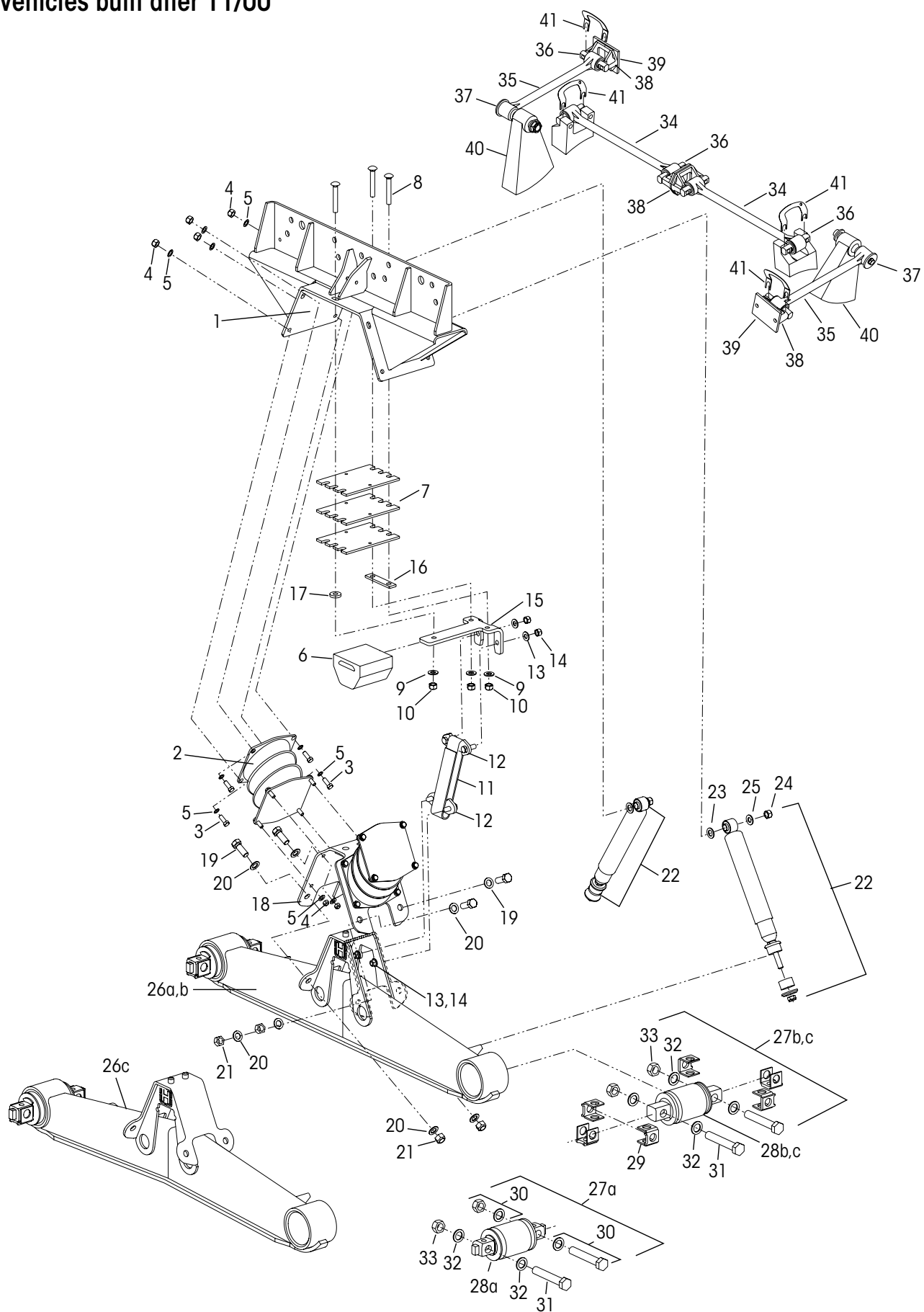
HN 402/462/522 - 9/98–11/00



HN 402/462/522 - 4/96–8/98



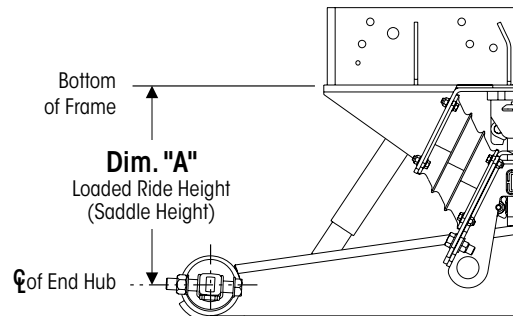
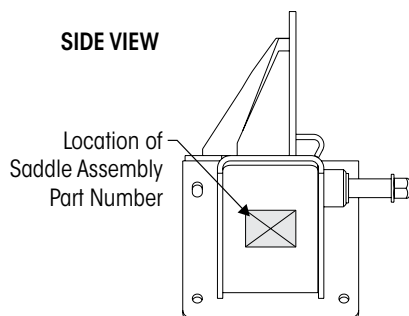
Vehicles built after 11/00



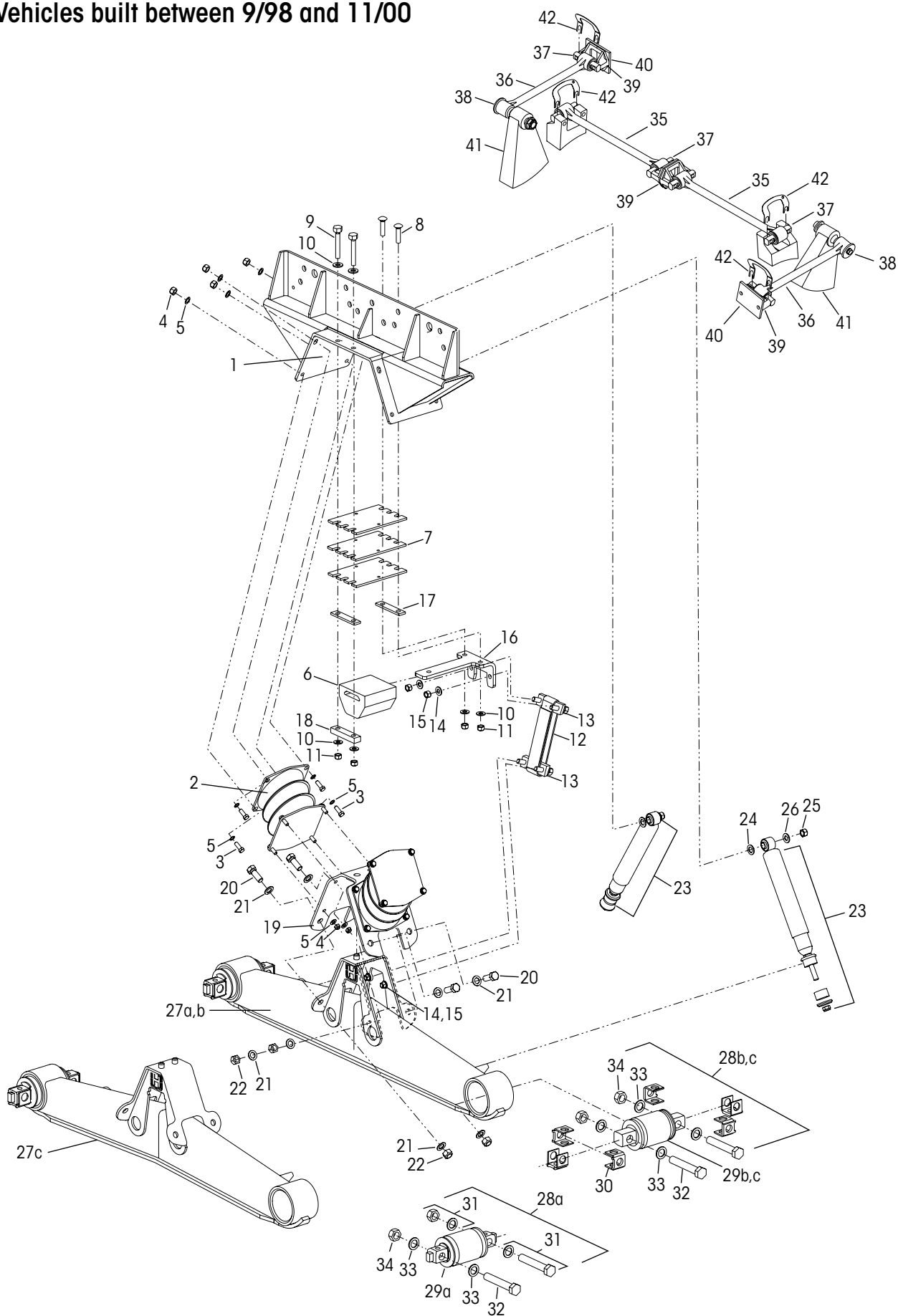


KEY NO.	PART NO.	DESCRIPTION	QTY.	KEY NO.	PART NO.	DESCRIPTION	QTY.
1		HN 402/462/522 Saddle Assembly, See Figure 1 below, Dimension "A" Saddle Height, Includes Key Nos. 2-18 60686-OXX 16½", 17½", or 18½" 58650-OXX 20¼" or 22½" 60879-000L Bolster Spring Service Kit, One Set, (2 pc) Includes Key No. 2	2	27		Bar Pin End Bushing Service Kit, One Wheel End, a 34013-087L Non-Shim Type, 28a, 30 b 34013-088L Shim Type, Includes Key No. 28b, 29a-30 c 34013-188L Rotating, Shim Type, 28c, 29a-30	
2		*Bolster Spring	4	28		*Bar Pin End Bushing a Non-Shim Type b Shim Type c Rotating, Shim Type	4
3	25114-011	7/16"-20 UNF x 1¼" Bolt	32	29		Bar Pin Shim a 50131-000 0.25" / 0.12" Standard b 50130-000 0.19" / 0.19" Optional c 57026-000 0.375" Optional flat shim	8
4	48949-000	7/16"-20 UNF-2B Locknut	32	30	34013-104	Bar Pin End Bushing Fastener Kit, One Wheel End, Includes Key Nos. 31-33	
5	22962-027	7/16" Washer	64	31	48941-000	1"-8 UNC x 6" Hex Bolt	4
6	60314-000	Auxiliary Load Spring	2	32	22962-008	1" Hardened Washer	8
7	58960-003	Auxiliary Load Spring Shim	6	33	48942-000	1"-8 UNC Locknut	4
8	58196-006	½"-13 UNC x 2¾" Round Head Square Neck Bolt Replaces 58196-005	6	34		**One-piece Longitudinal Torque Rod Assembly, Straddle/Straddle, Specify Length in mm ULTRA ROD®, Includes Key No. 36a 62000-XXX Front 1 62001-XXX Rear 1 ULTRA ROD® PLUS™, Includes Key No. 36b 72000-XXX Front 1 72001-XXX Rear 1	
9	22962-011	½" Washer	6	35		***One-piece Transverse Torque Rod Assembly, Straddle/Taper, Specify Length in mm 62350-XXX ULTRA ROD, Includes Key Nos. 36a-37a 72350-XXX ULTRA ROD PLUS, Includes Key Nos. 36b-37b 92350-XXX XTRB, Includes Key Nos. 36c-37c	2
10	49846-000	½"-13 UNC-2A Locknut	6	36		Straddle Bushing a 47691-000L ULTRA ROD b 64400-002L ULTRA ROD PLUS c 66649-002L XTRB	4
11	57878-003	Rebound Strap	2	37		Taper Bushing a 64697-000H ULTRA ROD b 64400-004L ULTRA ROD PLUS c 66649-004L XTRB	2
12	60639-000	Anchor Plate Assembly, Includes Key Nos. 12-14	4			Optional Two-Piece Torque Rod Assembly with Bushings Service Kit 60218-000 ULTRA ROD Straddle/Straddle 60215-000 ULTRA ROD Straddle/Taper 65781-000 ULTRA ROD PLUS Straddle/Taper 65781-001 XTRB Straddle/Straddle 65781-002 XTRB Straddle/Taper	
13		*Anchor Plate	4	38	22186-000	Torque Rod Frame Bracket	2
14		*½" Washer	8	39	45045-003	Back-up Plate (for Torque Rod)	2
15	58948-001	Auxiliary Load Spring Mounting Plate	2	40		****Transverse Rod Axle Bracket	2
16	58949-000	Auxiliary Load Spring Mounting Plate Shim (Inboard - ¼" thick)	2	41	49689-000	Torque Rod Shim	As Req.
17	22962-020	Outboard Spacer (¼" thick)	2		70867-001	P-80 Lubricant - 10 ml (Not Shown)	Per Bushing 1
18	58343-001	Saddle Vee Bracket	2				
	58440-001	Vee Bracket Fastener Service Kit, One Side, Includes Key Nos. 19-21					
19	50764-006	¾"-10 UNC-2A x 2" Hex Head Bolt	8				
20	22962-001	¾" Washer	16				
21	49842-000	¾"-10 UNC-2B Locknut	8				
22	60680-003L	Shock Absorber	4				
23	22962-001	¾" Washer	4				
24	30585-000	5/8" Upper Shock Locknut	4				
25	22962-004	5/8" Upper Shock Washer	4				
26		Equalizing Beam Assembly	2				
a	58494-001	HN 462, 54" Non-Shim Type					
	58494-002	HN 462, 54" Shim Type					
	58494-005	HN 402/462, 60" Non-Shim Type					
	58494-006	HN 402/462, 60" Shim Type					
	58494-009	HN 402/462, 72½" Non-Shim Type					
	58494-010	HN 402/462, 72½" Shim Type					
b	59973-003	HN 522, 54" Shim Type					
c	57889-004	HN 402, 52" Non-Shim Type					
	57889-005	HN 402, 52" Shim Type					
	57889-001	HN 402, 54" Non-Shim Type					
	57889-002	HN 402, 54" Shim Type					

Locate the part number (see sideview) on the saddle assembly, if the saddle assembly number is not legible or available, contact the vehicle manufacturer (be prepared with the vehicle VIN number and saddle height) to request the appropriate part number equipped on the vehicle.



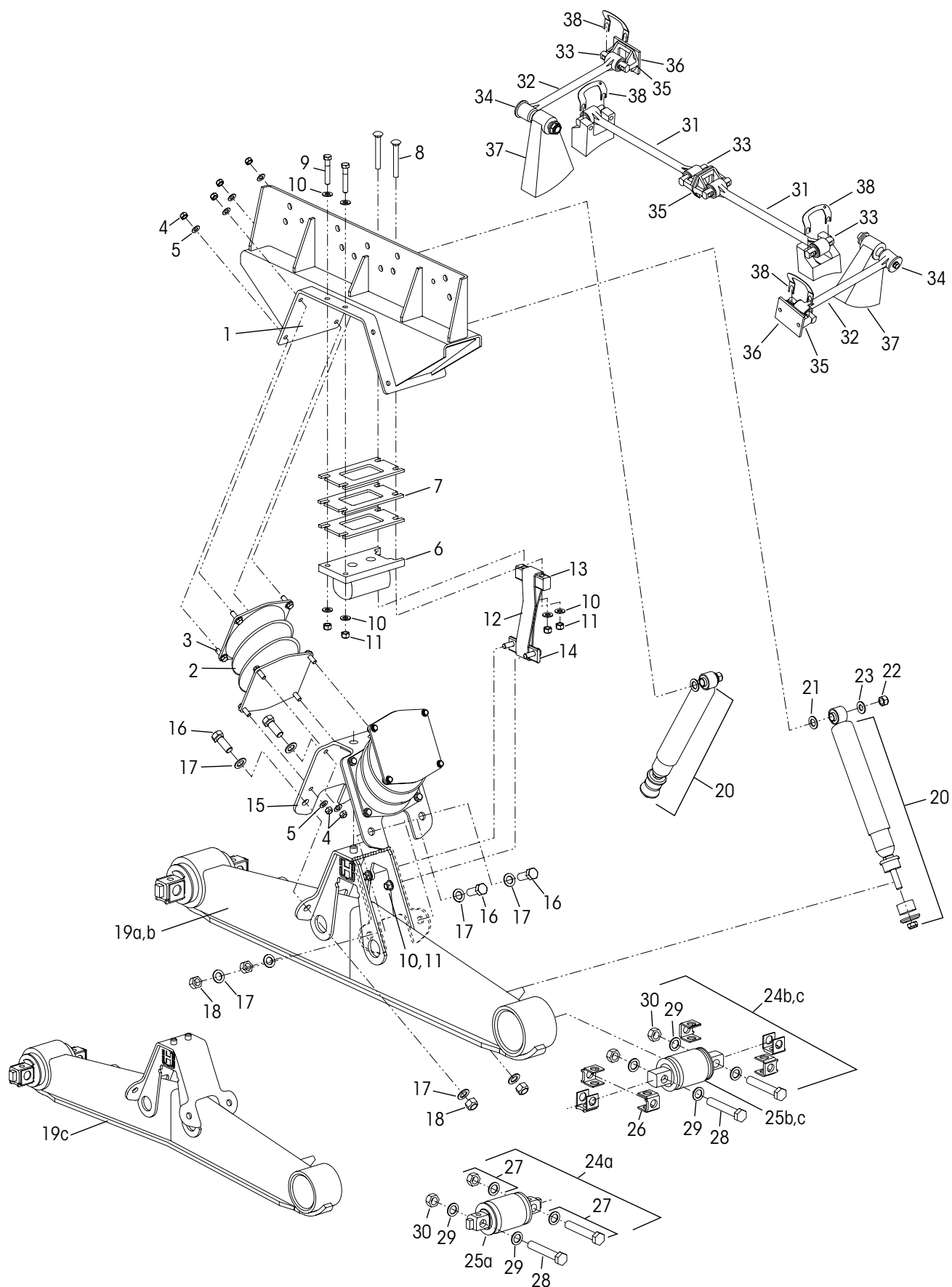
Vehicles built between 9/98 and 11/00



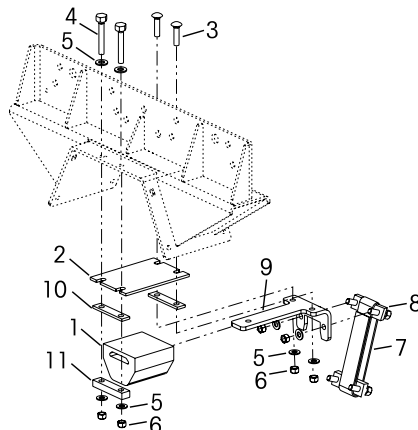


KEY NO.	PART NO.	DESCRIPTION	QTY.	KEY NO.	PART NO.	DESCRIPTION	QTY.
1		HN 402/462/522 Saddle Assembly, See Figure 1 on page 3, Includes Key Nos. 2-19	2	28		Bar Pin End Bushing Service Kit, One Wheel End,	
	60686-0XX	16½", 17½", or 18½"		a	34013-087L	Non-Shim Type, 29a, 31	
	58650-0XX	20¼" or 22½"		b	34013-088L	Shim Type Includes Key No. 29b, 30-31	
	60879-000L	Bolster Spring Service Kit, One Set, (2 pc)		c	34013-188L	Rotating, Shim Type, 29c, 30-31	
		Includes Key No. 2		29		*Bar Pin End Bushing	4
2		*Bolster Spring	4	a		Non-Shim Type	
3	25114-011	7/16"-20 UNF x 1¼" Bolt	32	b		Shim Type	
4	48949-000	7/16"-20 UNF-2B Locknut	32	c		Rotating, Shim Type	
5	22962-027	7/16" Washer	64	30		Bar Pin Shim	8
6	58947-000	Auxiliary Load Spring	2	a	50131-000	0.25" / 0.12" Standard	
7	58960-001	Auxiliary Load Spring Shim	6	b	50130-000	0.19" / 0.19" Optional	
8	58196-004	½"-13 UNC x 2¼" Round Head Bolt	4	c	57026-000	0.375" Optional flat shim	
9	24531-016	½"-13 UNC x 3½" Bolt	4	31	34013-104	Bar Pin End Bushing Fastener Kit, One Wheel End,	
10	22962-011	½" Washer	12			Includes Key Nos. 32-34	
11	49846-000	½"-13 UNC-2A Locknut	8	32	48941-000	1"-8 UNC x 6" Hex Bolt	4
12	57878-003	Rebound Strap	2	33	22962-008	1" Hardened Washer	8
13	60639-000	Anchor Plate Assembly, Includes Key Nos. 14-15	4	34	48942-000	1"-8 UNC Locknut	4
		Replaces 59779-000		35		**One-piece Longitudinal Torque Rod Assembly,	
14		*½" Washer	8			Straddle/Straddle, Specify Length in mm	
15		*½"-13 UNC-2A Locknut	8		62000-XXX	ULTRA ROD, Includes Key No. 37a	
16	58948-001	Auxiliary Load Spring Mounting Plate	2		62001-XXX	Front	1
		Replaces 58948-000				Rear	1
17	58949-000	¼" Auxiliary Load Spring Mounting Plate Shim	4			ULTRA ROD PLUS, Includes Key No. 37b	
18	58524-000	7/8" Rebound Strap Mounting Plate	2		72000-XXX	Front	1
19	58343-001	Saddle Vee Bracket	2		72001-XXX	Rear	1
		Replaces 58343-000		36		***One-piece Transverse Torque Rod Assembly,	2
	58440-001	Vee Bracket Fastener Service Kit, One Side,				Straddle/Taper, Specify Length in mm	
		Includes Key Nos. 20-22			62350-XXX	ULTRA ROD, Includes Key Nos. 37a-38a	
20	50764-006	¾"-10 UNC-2A x 2" Hex Head Bolt	8		72350-XXX	ULTRA ROD PLUS, Includes Key Nos. 37b-38b	
21	22962-001	¾" Washer	16		92350-XXX	XTRB, Includes Key Nos. 37c-38c	
22	49842-000	¾"-10 UNC-2B Locknut	8	37		Straddle Bushing	4
23	60680-003L	Shock Absorber	4	a	47691-000L	ULTRA ROD	
24	22962-001	¾" Washer	4	b	64400-002L	ULTRA ROD PLUS	
25	30585-000	5/8" Upper Shock Locknut	4	c	66649-002L	XTRB	
26	22962-004	5/8" Upper Shock Washer	4	38		Taper Bushing	2
27		Equalizing Beam Assembly	2	a	64697-000H	ULTRA ROD	
a	58494-001	HN 462, 54" Non-Shim Type		b	64400-004L	ULTRA ROD PLUS	
	58494-002	HN 462, 54" Shim Type		c	66649-004L	XTRB	
	58494-005	HN 402/462, 60" Non-Shim Type				Optional Two-Piece Torque Rod Assembly with Bushings Service Kit	
	58494-006	HN 402/462, 60" Shim Type			60218-000	ULTRA ROD Straddle/Straddle	
	58494-009	HN 402/462, 72½" Non-Shim Type			60215-000	ULTRA ROD Straddle/Taper	
	58494-010	HN 402/462, 72½" Shim Type			65781-000	ULTRA ROD PLUS Straddle/Taper	
b	59973-003	HN 522, 54" Shim Type			65781-001	XTRB Straddle/Straddle	
c	57889-004	HN 402, 52" Non-Shim Type			65781-002	XTRB Straddle/Taper	
	57889-005	HN 402, 52" Shim Type		39	22186-000	Torque Rod Frame Bracket	2
	57889-001	HN 402/462, 54" Non-Shim Type		40	45045-003	Back-up Plate (for Torque Rod)	2
	57889-002	HN 402/462, 54" Shim Type		41		****Transverse Rod Axle Bracket	2
				42	49689-000	Torque Rod Shim	As Req.
					70867-001	P-80 Lubricant - 10 ml (Not Shown)	Per Bushing 1

Vehicles built between 4/96 and 8/98



KEY NO.	PART NO.	DESCRIPTION	QTY.	KEY NO.	PART NO.	DESCRIPTION	QTY.
1		HN 402/462/522 Saddle Assembly. See Figure 1 on Page 3, Includes Key Nos. 2-15	2	25		*Bar Pin End Bushing	4
	60686-0XX	16½", 17½", or 18½"		a		Non-Shim Type	
	58650-0XX	20¼" or 22½"		b		Shim Type	
	60879-000L	Bolster Spring Service Kit, One Set, (2 pc)		c		Rotating, Shim Type	
		Includes Key No. 2		26		Bar Pin Shim	8
2		*Bolster Spring	4	a	50131-000	0.25" / 0.12" Standard	
3	25114-011	7/16"-20 UNF x 1 ¼" Bolt	32	b	50130-000	0.19" / 0.19" Optional	
4	48949-000	7/16"-20 UNF-2B Locknut	32	c	57026-000	0.375" Optional flat shim	
5	22962-027	7/16" Washer	64	27	34013-104	Bar Pin End Bushing Fastener Kit, One Wheel End, Includes Key Nos. 28-30	
6		Auxiliary Load Spring (58189-000 no longer available, see conversion kit 57974-011 below)	2	28	48941-000	1"-8 UNC x 6" Hex Bolt	4
7	57993-002	Auxiliary Load Spring Shim	6	29	22962-008	1" Hardened Washer	8
8	58196-002	½"-13 UNC-2A x 3 ½" Round Head Bolt	4	30	48942-000	1"-8 UNC Locknut	4
9	24531-017	½"-13 UNC-2A x 2 ¼" Hex Head Bolt	4	31		**One-piece Longitudinal Torque Rod Assembly, Straddle/Straddle, Specify Length in mm	
10	22962-011	½" Washer	16			ULTRA ROD, Includes Key No. 33a	
11	49846-000	½"-13 UNC-2A Locknut	12		62000-XXX	Front	1
12	57878-003	Rebound Strap	2		62001-XXX	Rear	1
13	58524-000	Rebound Strap Mounting Plate	2			ULTRA ROD PLUS, Includes Key No. 33b	
14	60639-000	Anchor Plate Assembly, Includes Fasteners	2		72000-XXX	Front	1
		Replaces 59779-000			72001-XXX	Rear	1
15	58343-001	Saddle Vee Bracket	2	32		***One-piece Transverse Torque Rod Assembly, Straddle/Taper, Specify Length in mm	2
	58440-001	Vee Bracket Fastener Service Kit, One Side,				ULTRA ROD, Includes Key Nos. 33a-34a	
		Includes Key Nos. 16-18			62350-XXX	ULTRA ROD PLUS, Includes Key Nos. 33b-34b	
16	50764-006	¾"-10 UNC-2A x 2" Hex Head Bolt	8		72350-XXX	XTRB, Includes Key Nos. 33c-34c	
17	22962-001	¾" Washer	16	33		Straddle Bushing	4
18	49842-000	¾"-10 UNC-2B Locknut	8	a	47691-000L	ULTRA ROD	
19		Equalizing Beam Assembly	2	b	64400-002L	ULTRA ROD PLUS	
	a	58494-001 HN 462, 54" Non-Shim Type		c	66649-002L	XTRB	
		58494-002 HN 462, 54" Shim Type		34		Taper Bushing	2
		58494-005 HN 402/462, 60" Non-Shim Type		a	64697-000H	ULTRA ROD	
		58494-006 HN 402/462, 60" Shim Type		b	64400-004L	ULTRA ROD PLUS	
		58494-009 HN 402/462, 72½" Non-Shim Type		c	66649-004L	XTRB	
		58494-010 HN 402/462, 72½" Shim Type				Optional Two-Piece Torque Rod Assembly with Bushings Service Kit	
	b	59973-003 HN 522, 54" Shim Type			60218-000	ULTRA ROD Straddle/Straddle	
	c	57889-004 HN 402, 52" Non-Shim Type			60215-000	ULTRA ROD Straddle/Taper	
		57889-005 HN 402, 52" Shim Type			65781-000	ULTRA ROD PLUS Straddle/Taper	
		57889-001 HN 402/462, 54" Non-Shim Type			65781-001	XTRB Straddle/Straddle	
		57889-002 HN 402/462, 54" Shim Type			65781-002	XTRB Straddle/Taper	
20	60680-003L	Shock Absorber	4	35	22186-000	Torque Rod Frame Bracket	2
21	22962-001	¾" Washer	4	36	45045-003	Back-up Plate (for Torque Rod)	2
22	30585-000	5/8" Locknut	4	37		****Transverse Rod Axle Bracket	2
23	22962-004	5/8" Washer	4	38	49689-000	Torque Rod Shim	As Req.
24		Bar Pin End Bushing Service Kit, One Wheel End,			70867-001	P-80 Lubricant - 10 ml (Not Shown)	Per Bushing 1
	a	34013-087L Non-Shim Type, 25a, 27					
	b	34013-088L Shim Type, Includes Key No. 25b, 26a-27					
	c	34013-188L Rotating, Shim Type, 25c, 26a-27					

KEY NO. 6
AUXILIARY SPRING CONVERSION KIT NO. 57974-011

Axle Set – Includes Key Nos. 1-11

			QTY.
1	60314-000	Auxiliary Spring	2
2	58960-003	Auxiliary Spring Shim	6
3	58196-006	½"-13 UNC x 2 ¾" Round Head Bolt	4
4	24531-016	½"-13 UNC x 3 ½" Bolt	4
5	22962-011	½" Hardened Washer	14
6	49846-000	½"-13 UNC Locknut	14
7	57878-003	Rebound Strap	2
8	64700-000	Anchor Plate Assembly	4
9	58948-001	Auxiliary Spring Mounting Plate	2
10	58949-000	¼" Auxiliary Spring Mounting Plate Shim	4
11	58524-000	¾" Rebound Strap Mounting Plate	4

■ Special Tools

BAR PIN STYLE END BUSHING TOOLS

INSTALLATION TOOL

Hendrickson Part No. 66086-103

OTC Part No. 1757

Visit otctools.com

Use with the equalizing beam removed from the truck, and in conjunction with OTC No. 51100 press plate and a 100 ton hydraulic shop press.



REMOVAL TOOLS

Hendrickson Part No. 66086-104

OTC Part No. 206457

Visit otctools.com



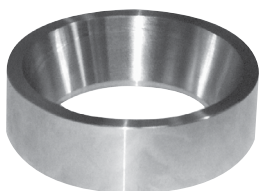
Hendrickson Part No. 66086-105

OTC Part No. 302030

Visit otctools.com



TORQUE ROD BUSHING FUNNEL TOOLS



Hendrickson Part No. 66086-001

ULTRA ROD

Hendrickson Part No. 66086-000

ULTRA ROD PLUS

NOTES: Equalizing beam axle brackets for drive axles are supplied by the axle manufacturer.

- * Item included in assembly/kit only, part not sold separately.
- ** Hendrickson's part number is stamped on the torque rod for identification. Be sure to include the suffix number when ordering, this number indicates torque rod length. The Hendrickson 2-piece torque rods can be used to create the desired length, see Torque Rod Selection Guide Literature No. 45745-148.
- *** Transverse torque rods are mandatory for HN Suspension regardless of axle spacing, see Literature No. 59310-004 for more information.
- **** Not supplied by Hendrickson, used for reference only, refer to the vehicle manufacturer for more information. Hendrickson is not responsible for components supplied by the vehicle manufacturer.

Hendrickson **HAULMAAX / HN Bolster Gauge**, Literature No. 48422-546 can be obtained on-line at www.hendrickson-intl.com/litform.

This is a general parts list to provide directional information. Components may vary by model. Questions in regards to parts, contact Hendrickson Truck Parts at 1.866.755.5968 (Toll-free U.S. and Canada), 630.910.2800 (Outside U.S. and Canada) or e-mail: truckparts@hendrickson-intl.com.

www.hendrickson-intl.com



Truck Commercial Vehicle Systems
800 South Frontage Road
Woodridge, IL 60517-4904 USA

1.866.755.5968 (Toll-free U.S. and Canada)
1.630.910.2800 (Outside U.S. and Canada)
Fax 1.630.910.2899