

H PARTS LIST

STEERTEK™ NXT High Capacity Steer Axle System for Pierce Fire/Rescue Vehicles

LIT NO: SP-338

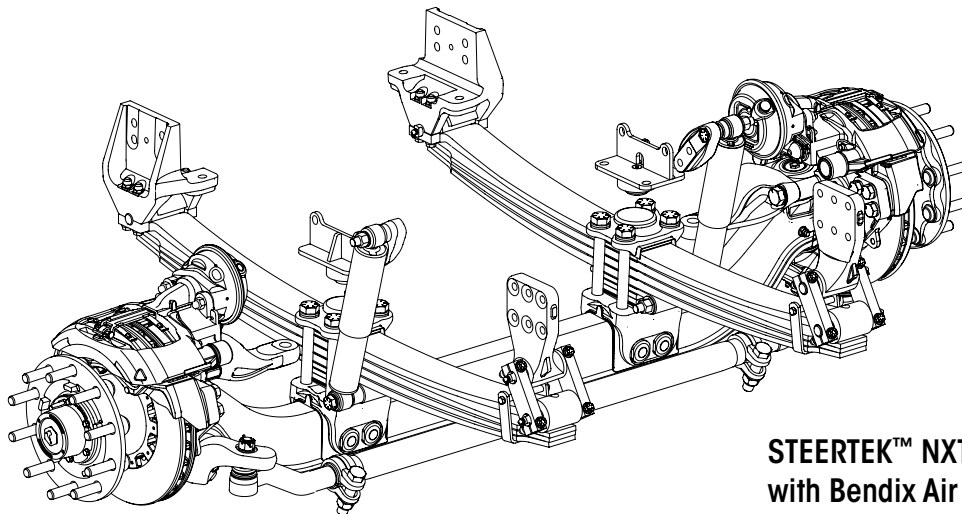
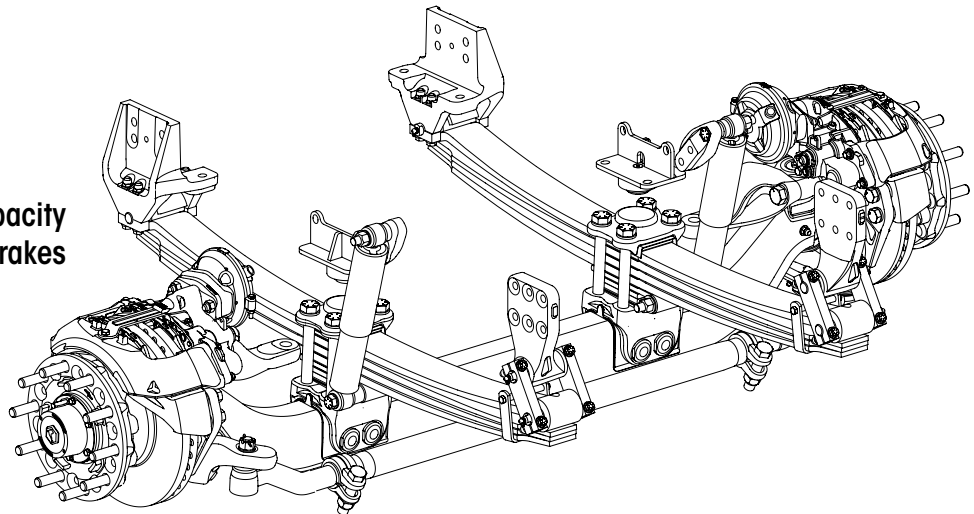
DATE: August 2023

REVISION: B

CONTENTS

| DESCRIPTION | PAGE |
|--|-------------|
| Parts Lists | |
| ■ Suspension • Axle • Clamp Group Assembly . . . | 2 |
| ■ Air Disc Brake Assembly | 4 |
| Selection Guides | 5 |

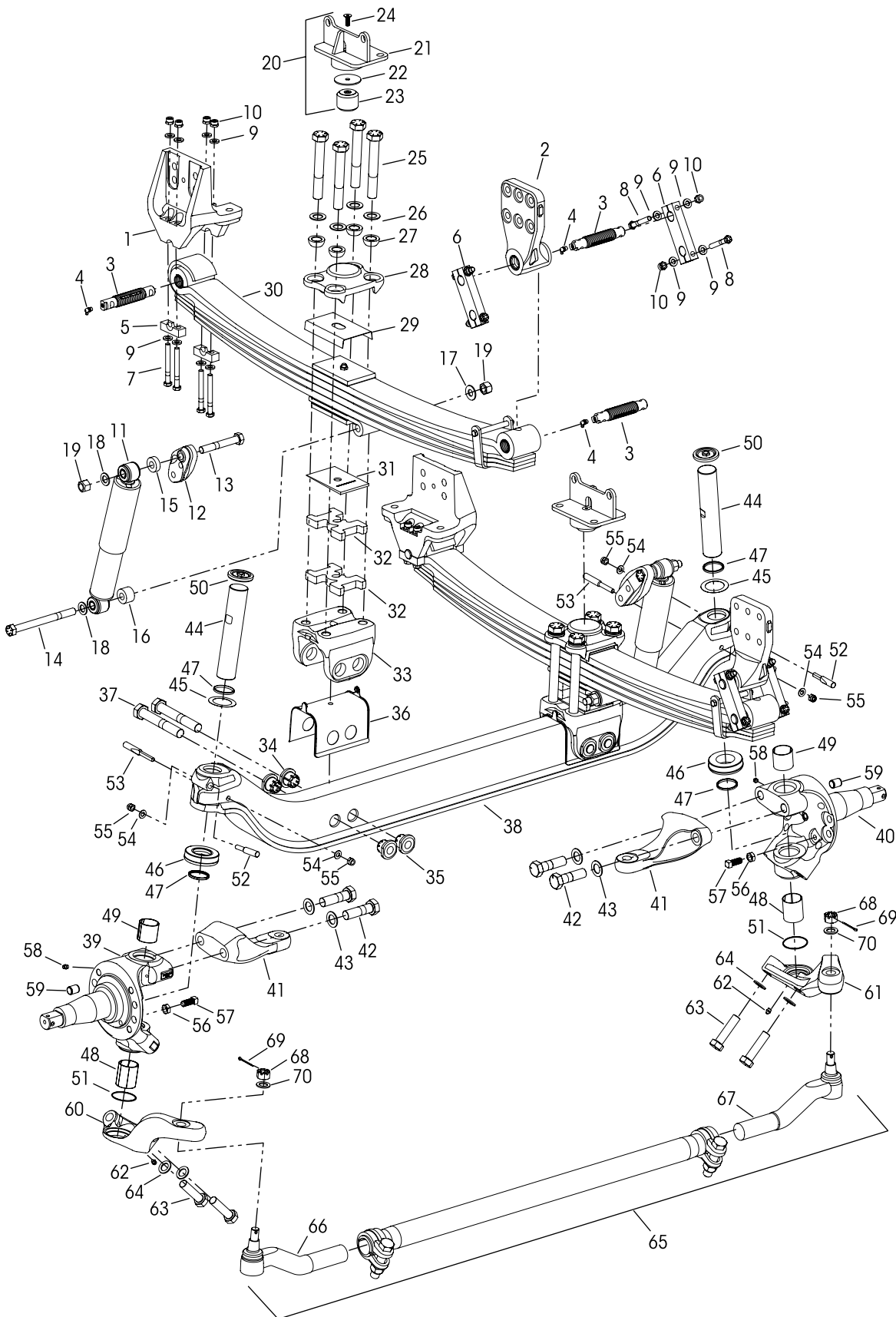
**STEERTEK™ NXT High Capacity
with Meritor Air Disc Brakes**



**STEERTEK™ NXT High Capacity
with Bendix Air Disc Brakes**



Suspension • Clamp Group • Axle Assembly





STEERTEK™ NXT High Capacity Axle for Pierce Fire / Rescue Vehicles

| | | | VEHICLE | | | | VEHICLE |
|---------|------------|---|---------|-----------|-----------|---|---------|
| KEY NO. | PART NO. | DESCRIPTION | QTY. | KEY NO. | PART NO. | DESCRIPTION | QTY. |
| 1 | 79894-003 | Frame Hanger Assembly Front | 2 | 36 | 78887-001 | Axle Seat Liner | 2 |
| 2 | 80159-006 | Rear with Bushing | 2 | 37 | | *1"-8 UNC x 6½" Hex Thru Bolt | 4 |
| | | Frame Hanger Fastener Service Kit, One Side | | 38 | 94305-XXX | STEERTEK NXT Axle Fire and Rescue, Includes Key Nos. 39-70, <i>See Table 2 on Page 5</i> | 1 |
| | 34013-247 | Front, Includes Key Nos. 5, 7, 9-10 | | | | Knuckle Assembly, Includes Key Nos. 47, 56-59 <i>See Table 2 on Page 5</i> | 2 |
| | 34013-248 | Rear, Includes Key Nos. 3-4, 6, 8-10 | | 39 | 77243-XXX | Left Hand | 1 |
| | 34013-249 | Single Threaded Pin and Grease Zerk Service Kit, Includes Key Nos. 3-4 | | 40 | 77243-XXX | Right Hand | 1 |
| 3 | | *Threaded Pin | 6 | 41 | 79685-XXX | Steering Arm, <i>See Table 2 on Page 5</i> | |
| 4 | | *Grease Zerk | 6 | 42 | 30550-027 | 1"-14 UNF x 3½" Hex Bolt | 4 |
| 5 | 79843-000 | Front Hanger Bottom Cap | 4 | 43 | 22962-051 | 1" Flat Washer | 4 |
| 6 | 79888-001 | Rear Shackles | 4 | | | Kingpin Service Kit, One Side Includes Key Nos. 44, 45a, 46-55, 63-64 | |
| 7 | 80362-001 | ½"-20 UNC x 4½" Hex Bolt | 8 | 44 | | *Kingpin | 2 |
| 8 | 80362-002 | ½"-20 UNC x 3¼" Shackle Hex Bolt | 8 | 45 | | Kingpin Shim (As needed for service) | 2 |
| 9 | 22962-014 | ½" Flat Washer | 32 | a | 77241-002 | 0.01" Thickness | |
| 10 | 17700-034 | ½"-20 UNC Locknut | 16 | b | 77241-003 | 0.02" Thickness | |
| 11 | 80606-001L | Shock Absorber | 2 | 46 | 75918-001 | Thrust Bearing | 2 |
| 12 | 78250-002 | Shock Bracket | 2 | 47 | 75966-001 | Kingpin Seal | 4 |
| 13 | 50764-008 | ¾"-10 UNC x 5" Upper Shock Hex Bolt | 2 | | | Kingpin Bushing | |
| 14 | 50764-014 | ¾"-10 UNC x 8½" Lower Shock Hex Bolt | 2 | 48 | 75919-001 | Lower, 2½" Length | 2 |
| | | Shock Spacer | | 49 | 75919-002 | Upper, 2" Length | 2 |
| 15 | 59946-006 | Upper, 13.2 mm Thick | 2 | 50 | 77209-001 | Grease Cap | 2 |
| 16 | 59946-015 | Lower Outboard, 28 mm Thick | 2 | 51 | 68303-004 | O-Ring | 2 |
| 17 | 59946-005 | Lower Inboard, 3 mm Thick | 2 | | | Kingpin Draw Key | |
| 18 | 22962-001 | ¾" Flat Washer | 4 | 52 | 75925-001 | Upper, 3¾" Length | 2 |
| 19 | 49842-000 | ¾"-10 UNC Locknut | 4 | 53 | 75925-002 | Lower, 4¾" Length | 2 |
| 20 | 79854-000 | Jounce Stop Assembly, Includes Key Nos. 21-24 | 2 | 54 | 22962-054 | 7/16" Flat Washer | 4 |
| 21 | | *Jounce Stop | 2 | 55 | 17700-008 | 7/16"-14 UNC-2B Nut | 4 |
| 22 | | *Spacer | 2 | 56 | 17491-023 | 5/8"-11 UNC-2B Jam Nut | 2 |
| | 34013-505 | Jounce Stop Service Kit, One Side, Includes Key Nos. 23-24 | | 57 | 93334-001 | 5/8"-11 UNC x 1 ½" Set Screw | 2 |
| 23 | | *Rubber Bump Stop | 2 | 58 | 33117-000 | Grease Zerk | 2 |
| 24 | | *M10 x 1.5 x 30 mm Flat Socket Cap Screw | 2 | 59 | 64246-000 | ABS Sensor Sleeve | 2 |
| | 94307-XXX | Leaf Spring & Clamp Group Assembly, Includes Key Nos. 25-37, <i>See Table 1 on Page 5</i> | 2 | | 77244-XXX | Tie Rod Arm Assembly, Includes Key No. 62 <i>See Table 2 on Page 5</i> | |
| | 34013-XXX | Clamp Group Service Kit, One Side, Includes Key Nos. 25-27 & 29, <i>See Table 1 on Page 5</i> | | 60 | | Left Hand | 1 |
| 25 | 64107-XXX | 1"-8 UNC Hex Bolt, <i>See Table 1 on Page 5</i> | 8 | 61 | | Right Hand | 1 |
| 26 | 22962-051 | 1" Flat Washer (<i>if equipped</i>) <i>See Table 1 on Page 5</i> | 8 | 62 | 33117-000 | Grease Zerk | 2 |
| 27 | 78356-002 | 1" Spherical Washer | 8 | 63 | 30418-014 | 7/8"-14 UNF x 3½" Hex Bolt | 4 |
| 28 | 78888-000 | Top Pad | 2 | 64 | 22962-002 | 7/8" Flat Washer | 4 |
| 29 | 79273-001 | Spring Liner | 2 | 65 | 79365-001 | Tie Rod Assembly, 20K Drop, Includes Key Nos. 66-68 | 1 |
| 30 | 82378-XXX | Leaf Spring Assembly, <i>See Table 1 on Page 5</i> | 2 | | | Tie Rod End Service Kits, | |
| 31 | 80143-001 | Caster Wedge - 2° | 2 | 60961-884 | | Axle Set, Includes Kit Nos. 60961-882 and -883 | |
| 32 | | Leaf Spring Spacer (<i>if equipped</i>) <i>See Table 1 on Page 5</i> | 4 | 60961-882 | | Left Hand, Includes Key Nos. 66, 68-70 | |
| 33 | 77232-000 | Axle Seat | 2 | 60961-883 | | Right Hand, Includes Key Nos. 67-70 | |
| | 34013-229 | Axle Clamp Collar Service Kit, One Side Includes Key Nos. 34-37 | | | | *Tie Rod End, Includes Key No. 68 | |
| | | *Axle Collar | | 66 | | Left Hand | 1 |
| 34 | | Non Threaded | 4 | 67 | | Right Hand | 1 |
| 35 | | Threaded | 4 | 68 | | *7/8"-14 UNF-2A Castle Nut | 2 |
| | | | | 69 | | *Cotter Pin | 2 |
| | | | | 70 | | *7/8" Flat Washer | 2 |

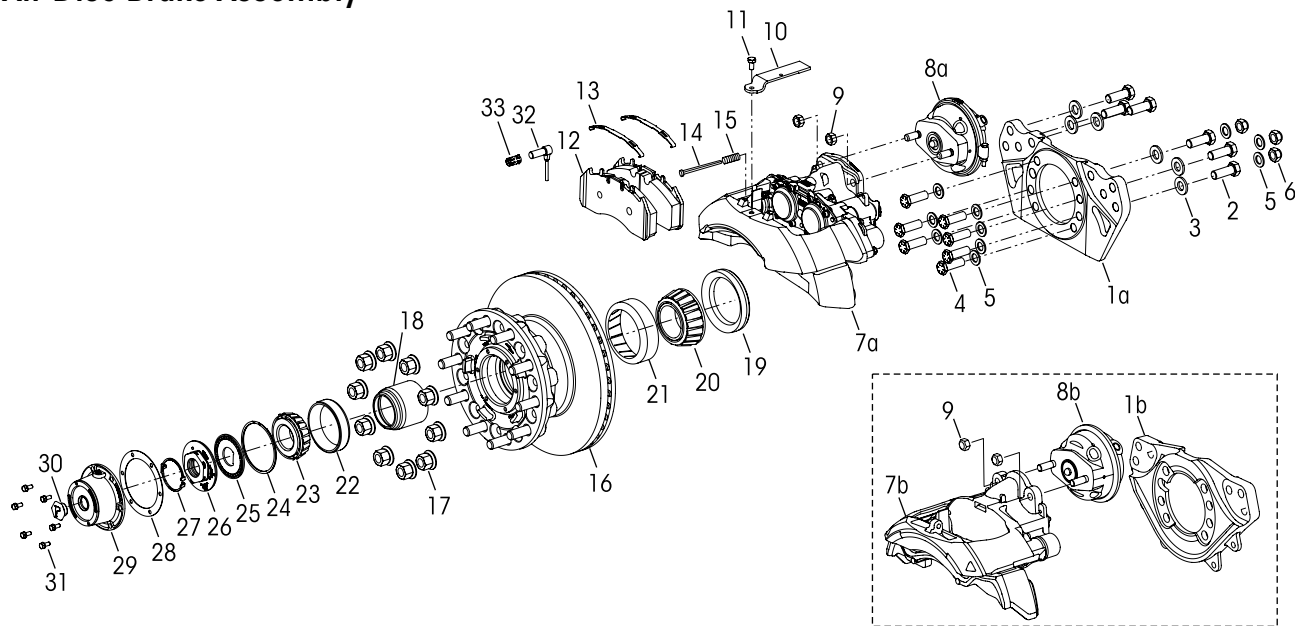
NOTE: * Item included in kit/assembly only, part not sold separately.

** Part not supplied by Hendrickson for aftermarket service purposes. Description and part number listed for reference only. For more information and assistance with service, maintenance, and rebuild instructions on these components see following component manufacturers:

- BENDIX 1-800-AIR-BRAKE or online for parts: www.bendix.com/en/services-and-support/b2bendix-quick-links and for technical support training: www.bendix.com/en/services-and-support/brake-school
- CONMET technical and parts support 800.547.9473 or online aftermarket.conmetwheelends.com/hub-selection
- DRIVPARTS technical and parts support 800.334.3210 or online www.drivparts.com
- MERITOR technical and parts support 888.725.9355, or online for parts: www.meritorpartsexpress.com and for technical support: www.meritorbullpen.com
- WABCO technical and parts support 855.228.3203 or online www.wabco-customercentre.com



Air Disc Brake Assembly



| KEY NO. | PART NO. | DESCRIPTION | VEHICLE QTY. |
|---------|------------|--|--------------|
| 1 | a | **Meritor Torque Plate Assembly Left Hand, Part No. 3215-F-1878 | 1 |
| | | Right Hand, Part No. 3215-E-1877 | 1 |
| | b | **Bendix Torque Plate Assembly Left Hand, Part No. K138452 | 1 |
| | | Right Hand, Part No. K138451 | 1 |
| 2 | | M20 Hex Head Bolt | 12 |
| | 69781-002 | 55 mm, Use with 1a | |
| | SA-13200-2 | 60 mm, Use with 1b | |
| 3 | | M20 Flat Washer | 12 |
| | 58246-018 | Use with 1a, Replaces 58246-039 | |
| | 58246-007 | Use with 1b | |
| 4 | 80345-004 | 3/4"-16 UNC x 2 1/4" Low Profile Hex Head Bolt | 14 |
| 5 | 22962-001 | 3/4" Flat Washer | 20 |
| 6 | 80691-001 | 3/4"-16 UNC Hex Locknut | 6 |
| 7 | a | **Meritor Caliper Assembly, Includes Key Nos. 10-11, 14-15 Left Hand, Part No. EX225H202XX000S | 1 |
| | | Right Hand, Part No. EX225H201XX000S | 1 |
| | b | **Bendix Caliper with Carrier Assembly Left Hand, Part No. K098279 | 1 |
| | | Right Hand, Part No. K098278 | 1 |
| | | Brake Carrier Kit No. K051853 | |
| | | Guide Pin and Seal Kit No. 803114 | |
| 8 | a | **WABCO Air Brake Chamber MGM T24L, Includes K80131-001 Key No. 9 Left Hand, Part No. 423 506 1340 | 1 |
| | | Right Hand, Part No. 423 506 1350 | 1 |
| | b | **Bendix Air Brake Chamber T24 Left Hand, Part No. K152688 | 1 |
| | | Right Hand, Part No. K152689 | 1 |
| 9 | | **Hex Nut | 4 |
| | | **Meritor Disc Brake Pad Retainer Kit No. 225281, Includes Key Nos. 10-11 | |
| | | **Meritor Disc Brake Pad Kit No. 2252H2CG, Includes Key Nos 12-13 | |
| | | **Meritor Wear Indicator Kit No. 225224, Includes Key Nos. 14-15 | |
| | | **Bendix Disc Brake Pad Kit No. K129276, Includes Key Nos 10-14 | |

| KEY NO. | PART NO. | DESCRIPTION | VEHICLE QTY. |
|---------|-----------|--|--------------|
| 10 | | **Pad Retainer | |
| 11 | | **Pad Retainer Bolt | |
| 12 | | **Air Disc Brake Pad | |
| 13 | | **ADB Pad Spring | |
| 14 | | **Wear Indicator | |
| 15 | | **Wear Indicator Spring | |
| 16 | | **Conmet Hub and Rotor Assembly, Includes Bearings and Seals Part No. 10083224 Part No. 10087600 | 2 |
| | | **Conmet Brake Rotor Replacement Kit No. 10082181, One Wheel End, Includes Rotor and 10 of each Cap Screws and Washers | |
| 17 | | **M22 x 1.5 Two-piece Wheel Nut | 20 |
| | | **Conmet Hub Bearing Rebuild Kit No. 10081728, One Wheel End, Includes Key Nos. 18-23 | |
| | | **Conmet Wheel Seal Kit No. 10081519, One Wheel End, Includes Key Nos. 18-19 | |
| 18 | | **Bearing Spacer Part No. 10034342 | |
| 19 | 10080435 | **Wheel Seal Part No. 10045883 | |
| 20 | | **Inner Bearing Cone Part No. 10041922 | |
| 21 | | **Inner Bearing Cup Part No. 10041921 | |
| 22 | | **Outer Bearing Cup Part No. 10041923 | |
| 23 | | **Outer Bearing Cone Part No. 10041924 | |
| | | **Conmet Preset Plus FL Nut Assembly Kit No. 10036550, Includes Key Nos. 24-27 | |
| 24 | | **Snap Ring - Double Wind Part No. 10033288 | |
| 25 | | **Spindle Nut Lockwasher Part No. 10031171 | |
| 26 | | **Outer Spindle Nut Part No. 10031170 | |
| 27 | | **Snap Ring Retainer Part No. 10031172 | |
| 28 | | **Drivparts Hub Cap Gasket No. G-3009 | 2 |
| 29 | | **Drivparts Hub Cap Part No. 343-009, Includes Key No. 30 | 2 |
| 30 | | **Rubber Plug | |
| 31 | 64545-002 | 5/16"-18 UNC x 3/4" Hex Bolt with Retained Washer | 12 |
| 32 | | **WABCO ABS Sensor Part No. 441-032-900-0 | 2 |
| 33 | 64550-000 | ABS Sensor Clip | 2 |



■ Selection Guides

TABLE 1 Leaf Spring Assembly and Components

| Capacity | Ride Height | Leaf Spring and Clamp Group Assembly | Clamp Group Service Kit | Leaf Spring Assembly Key No. 30 | 1" Hex Bolt Key No. 25 | | 1" Flat Washer Key No. 26 (Use only as specified) | Leaf Spring Spacer Key No. 32 | | |
|----------|-------------|--------------------------------------|-------------------------|---------------------------------|------------------------|-----------|---|-------------------------------|-----|-----------|
| | | | | | Part No. | Length | | Part No. | Qty | Thickness |
| 18K | 9 | 94307-001 | 34013-419 | 82378-250 | 8 | 64107-001 | 22962-051 | N/A | | |
| | 9.5 | 94307-002 | 34013-420 | 82378-251 | 8.5 | 64107-006 | | N/A | | |
| | 10 | 94307-003 | 34013-256 | 82378-250 | 9 | 64107-003 | | 1 | 1" | 79814-000 |
| 20K | 9 | 94307-101 | 34013-419 | 82379-300 | 8 | 64107-001 | 22962-051 | N/A | | |
| | 9.5 | 94307-102 | 34013-420 | 82379-301 | 8.5 | 64107-006 | | N/A | | |
| | 10 | 94307-103 | 34013-256 | 82379-300 | 9 | 64107-003 | | 1 | 1" | 79814-000 |
| 24K | 9 | 94307-201 | 34013-397 | 82380-300 | 8 | 64107-001 | - | N/A | | |
| | 9.5 | 94307-202 | 34013-279 | 82380-301 | 8.5 | 64107-006 | | N/A | | |
| | 10 | 94307-203 | 34013-312 | 82380-300 | 9 | 64107-003 | | 1 | 1" | 79814-000 |

WARNING

USE 1" FLAT WASHERS (PART NO. 22962-051) ONLY AS SPECIFIED IN TABLE 1 (LEAF SPRING ASSEMBLY AND COMPONENTS). THE TABLE LISTS DIFFERENT CONFIGURATIONS FOR THIS ASSEMBLY. IN CERTAIN CONFIGURATIONS, THE CLAMP GROUP REQUIRES THE USE OF 1" FLAT WASHERS (PART NO. 22962-051) WITH THE SPECIFIED 1" HEX BOLT LENGTH, BUT NOT IN OTHER CONFIGURATIONS. IMPROPER CLAMP FORCE IN THE LEAF SPRING AND CLAMP GROUP ASSEMBLY, IMPROPER SEATING AND COMPONENT DAMAGE CAN CAUSE LOSS OF VEHICLE CONTROL, POSSIBLE PERSONAL INJURY, DEATH, OR PROPERTY DAMAGE.

TABLE 2 Axle, Knuckle and Tie Rod Arm and Steering Arm Assembly

| Wheelbase | Capacity | STEERTEK NXT Axle Assembly Key No. 38 | Tie Rod Arm Assembly Part No. | | Knuckle Assembly Part No. | | Steering Arm Assembly Part No. | |
|-----------|----------|---------------------------------------|-------------------------------|-----------------------|---------------------------|-----------------------|--------------------------------|-----------------------|
| | | | Left Hand Key No. 60 | Right Hand Key No. 61 | Left Hand Key No. 39 | Right Hand Key No. 40 | Left Hand Key No. 41 | Right Hand Key No. 41 |
| 130-170" | 18K | 94305-001 | 77244-057 | 77244-058 | 77243-001 | 77243-102 | 79685-001 | N/A |
| | 24K | 94305-002 | | | | 77243-002 | | 79685-001 |
| 171-200" | 18K | 94305-003 | 77244-059 | 77244-060 | 77243-001 | 77243-102 | 79685-001 | N/A |
| | 24K | 94305-004 | | | | 77243-002 | | 79685-001 |
| 201-230" | 18K | 94305-005 | 77244-061 | 77244-062 | 77243-001 | 77243-102 | 79685-001 | N/A |
| | 24K | 94305-006 | | | | 77243-002 | | 79685-001 |
| 231-270" | 18K | 94305-007 | 77244-063 | 77244-064 | 77243-001 | 77243-102 | 79685-001 | N/A |
| | 24K | 94305-008 | | | | 77243-002 | | 79685-001 |

This is a general parts list to provide directional information. Components may vary by model. Questions in regards to parts, contact Hendrickson Truck Parts at 1.866.755.5968 (Toll-free U.S. and Canada), 630.910.2800 (Outside U.S. and Canada) or email: truckparts@hendrickson-intl.com during normal business hours. Actual product performance may vary depending upon vehicle configuration, operation, service and other factors. All applications must comply with applicable Hendrickson specifications and must be approved by the respective vehicle manufacturer with the vehicle in its original, as-built configuration. Contact Hendrickson for additional details regarding specifications, applications, capacities, and operation, service and maintenance instructions.

*Call Hendrickson at **1.866.755.5968** (toll-free) or **1.630.910.2800** for additional information.*



www.hendrickson-intl.com

TRUCK COMMERCIAL VEHICLE SYSTEMS
800 South Frontage Road
Woodridge, IL 60517-4904 USA
1.866.755.5968 (Toll-free U.S. and Canada)
1.630.910.2800 (Outside U.S. and Canada)
Fax 1.630.910.2899

SP-338 Rev B 08-23

© 2022 – 2023 Hendrickson USA, L.L.C. All Rights Reserved. All trademarks shown are owned by Hendrickson USA, L.L.C., or one of the affiliates, in one or more countries.

Information contained in this literature was accurate at the time of publication. Product changes may have been made after the copyright date that are not reflected.

Printed in United States of America