

# **H PARTS LIST**

## **STEERTEK™ NXT High Capacity Steer Axle System for Spartan Fire/Rescue Vehicles**

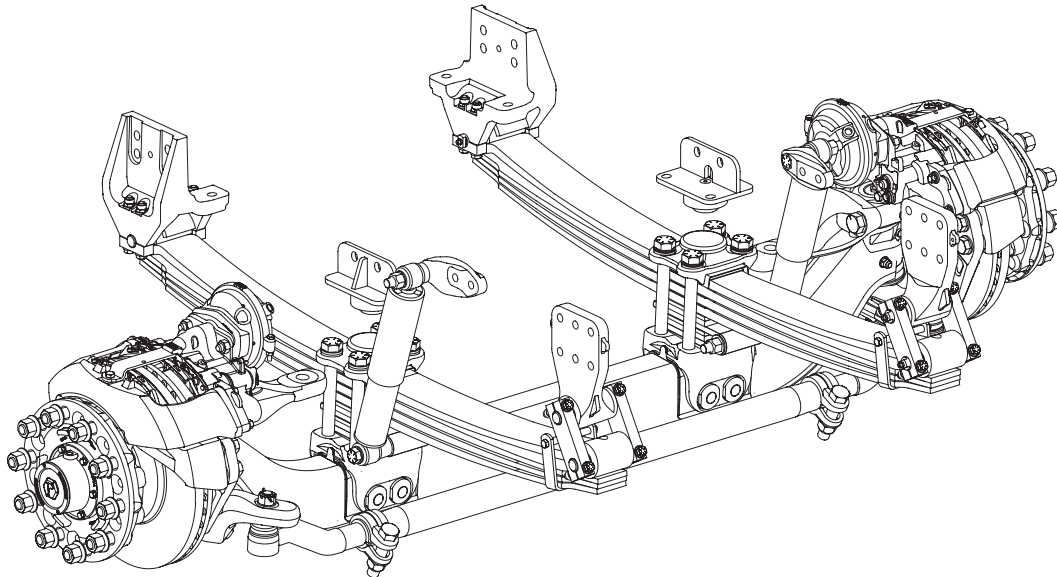
LIT NO: SP-336

DATE: August 2023

REVISION: B

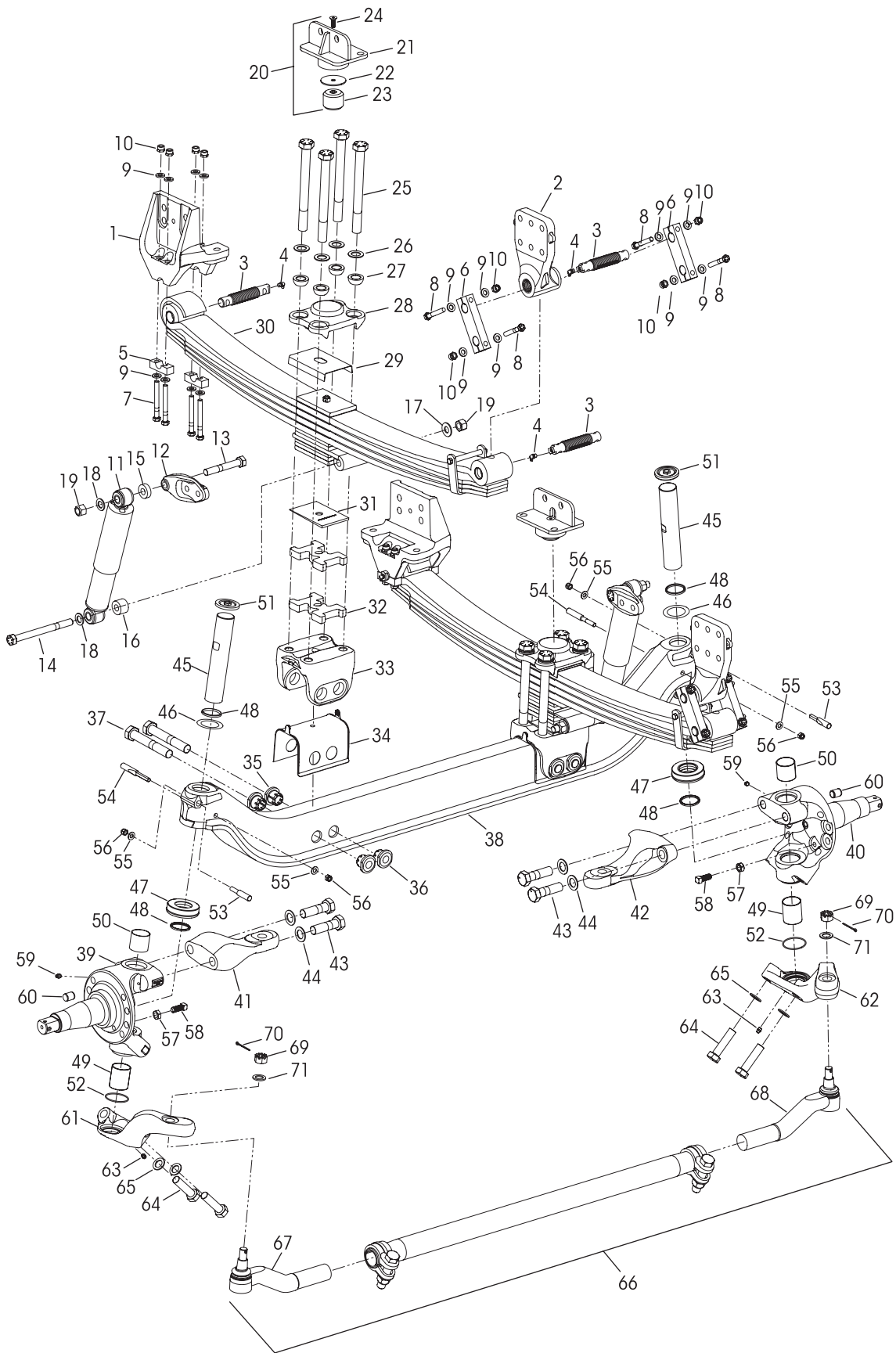
### **CONTENTS**

<b>DESCRIPTION</b>	<b>PAGE</b>
Front Suspension • Axle • Clamp Group Assembly	2
Selection Guides . . . . .	4
Air Disc Brake Assembly . . . . .	5





Front Suspension • Clamp Group • Axle Assembly





# STEERTEK™ NXT High Capacity Steer Axle System for Spartan Vehicles

		VEHICLE			VEHICLE		
KEY NO.	PART NO.	DESCRIPTION	QTY.	KEY NO.	PART NO.	DESCRIPTION	QTY.
1	79894-003	Frame Hanger Assembly Front	2	37		*1"-8 UNC x 6½" Hex Thru Bolt	4
2	80159-005	Rear with Bushing	2	38	93066-XXX	STEERTEK NXT Axle Fire and Rescue, Includes Key Nos. 39-71, <i>See Table 2 on Page 4</i>	1
	34013-247	<b>Frame Hanger Fastener Service Kit, One Side</b> Front, Includes Key Nos. 5, 7, 9-10				Knuckle Assembly, Includes Key Nos. 48, 57-60	
	34013-248	Rear, Includes Key Nos. 3-4, 6, 8-10		39	77243-001	Left Hand	1
	34013-249	<b>Single Threaded Pin and Grease Zerk Service Kit, Includes Key Nos. 3-4</b>		40	77243-XXX	Right Hand, <i>See Table 2 on Page 4</i>	1
3		*Threaded Pin	6	41	77337-012	Steering Arm Left Hand	1
4		*Grease Zerk	6	42		Right Hand, <i>See Table 2 on Page 4</i>	1
5	79843-000	Front Hanger Bottom Cap	4	43	30550-027	1"-14 UNF x 3½" Hex Bolt	4
6	79888-001	Rear Shackles	4	44	22962-051	1" Flat Washer	4
7	80362-001	½"-20 UNC x 4½" Hex Bolt	8		34013-230	<b>Kingpin Service Kit, One Side</b> Includes Key Nos. 45, 46a, 47-56, 64-65	
8	80362-002	½"-20 UNC x 3¼" Shackle Hex Bolt	8	45		*Kingpin	2
9	22962-014	½" Flat Washer	32	46		Kingpin Shim (As needed for service)	2
10	17700-034	½"-20 UNC Locknut	16	a	77241-002	0.01" Thickness	
11	80606-001L	Shock Absorber	2	b	77241-003	0.02" Thickness	
12	78250-002	Shock Bracket	2	47	75918-001	Thrust Bearing	2
13	50764-008	¾"-10 UNC x 5" Upper Shock Hex Bolt	2	48	75966-001	Kingpin Seal	4
14	50764-014	¾"-10 UNC x 8½" Lower Shock Hex Bolt	2			Kingpin Bushing	
		Shock Spacer		49	75919-001	Lower, 2½" Length	2
15	59946-006	Upper, 13.2 mm Thick	2	50	75919-002	Upper, 2" Length	2
16	59946-015	Lower Outboard, 28 mm Thick	2	51	77209-001	Grease Cap	2
17	59946-005	Lower Inboard, 3 mm Thick	2	52	68303-004	O-Ring	2
18	22962-001	¾" Flat Washer	4			Kingpin Draw Key	
19	49842-000	¾"-10 UNC Locknut	4	53	75925-001	Upper, 3¾" Length	2
20	93558-000	Jounce Stop Assembly, Includes Key Nos. 21-24	2	54	75925-002	Lower, 4¾" Length	2
21		*Jounce Stop	2	55	22962-054	7/16" Flat Washer	4
22		*Spacer	2	56	17700-008	7/16"-14 UNC-2B Nut	4
	34013-505	<b>Jounce Stop Service Kit, One Side,</b> Includes Key Nos. 23-24		57	17491-023	5/8"-11 UNC-2B Jam Nut	2
23		*Rubber Bump Stop	2	58	80183-000	5/8"-11 UNC x 1½" Set Screw	2
24		*M10 x 1.5 x 30 mm Flat Socket Cap Screw	2	59	33117-000	Grease Zerk	2
	93068-XXX	Leaf Spring & Clamp Group Assembly, Includes Key Nos. 25-40, <i>See Table 1 on Page 4</i>	2	60	64246-000	ABS Sensor Sleeve	2
	34013-XXX	<b>Clamp Group Service Kit, One Side,</b> Includes Key Nos. 25-27, 29, <i>See Table 1 on Page 4</i>			77244-XXX	Tie Rod Arm Assembly, Includes Key No. 63 <i>See Table 2 on Page 4</i>	
25	64107-XXX	1"-8 UNC Hex Bolt, <i>See Table 1 on Page 4</i>	8	61		Left Hand	1
26	22962-051	1" Flat Washer, <i>See Table 1 on Page 4</i>	8	62		Right Hand	1
27	78356-002	1" Spherical Washer	8	63	33117-000	Grease Zerk	2
28	78888-000	Top Pad	2	64	30418-014	7/8"-14 UNF x 3½" Hex Bolt	4
29	79273-001	Spring Liner	2	65	22962-002	7/8" Flat Washer	4
30		Leaf Spring Assembly, <i>See Table 1 on Page 4</i>	2	66		Tie Rod Assembly, Includes Key Nos. 67-69 <i>See Table 2 on Page 4</i>	1
31	80143-001	Caster Wedge - 2°	2			<b>Tie Rod End Service Kits, <i>See Table 2 on Page 4</i></b>	
32		Leaf Spring Spacer (if equipped) <i>See Table 1 on Page 4</i>	4			Axle Set, Includes Left Hand and Right Hand Kits Left Hand, Includes Key Nos. 67, 69-71 Right Hand, Includes Key Nos. 68-71	
33	77232-000	Axle Seat	2			*Tie Rod End, Includes Key No. 69, <i>See Table 2 on Page 4</i>	
	34013-229	<b>Axle Clamp Collar Service Kit, One Side</b> Includes Key Nos. 34-37		67		Left Hand	1
34	78887-001	Axle Seat Liner	2	68		Right Hand	1
		*Axle Collar		69		*7/8"-14 UNF-2A Castle Nut	2
35		Non Threaded	4	70		*Cotter Pin	2
36		Threaded	4	71		*7/8" Flat Washer	2

**NOTE:** \* Item included in kit/assembly only, part not sold separately.



■ Selection Guides

TABLE 1 Leaf Spring Assembly and Components

Capacity	Ride Height	Leaf Spring and Clamp Group Assembly	Clamp Group Service Kit	Leaf Spring Assembly Key No. 30	1" Hex Bolt Key No. 25		1" Flat Washer (Use only as specified) Key No. 26	1" Leaf Spring Spacer Key No. 32	
		<i>Refer to Parts List for Contents</i>				Length	Part No.	Part No.	Part No.
		Part No.	Part No.	Part No.	Part No.				
18K	8.5	93068-001	34013-473	82795-100	7.5"	64107-000	---	---	
	9.0	93068-002	34013-397	82795-000	8.0"	64107-001		---	
	9.5	93068-003	34013-279	82795-100	8.5"	64107-006		79814-000	
	10.0	93068-004	34013-312	82795-000	9.0"	64107-003		---	
20K	9.0	93068-101	34013-397	82732-100	8.0"	64107-001	---	---	
	9.5	93068-102	34013-279	82732-000	8.5"	64107-006		---	
	10.0	93068-103	34013-312	82732-100	9.0"	64107-003		79814-000	
	10.5	93068-104	34013-474	82732-000	9.5"	64107-007		---	
22K	8.5	93068-201	34013-473	82734-100	7.5"	64107-000	---	---	
	9.0	93068-202	34013-397	82734-000	8.0"	64107-001		---	
	9.5	93068-203	34013-279	82734-100	8.5"	64107-006		79814-000	
	10.0	93068-204	34013-312	82734-000	9.0"	64107-003		---	
24K	9.5	93068-301	34013-256	82736-100	9.0"	64107-003	22962-051	---	
	10.0	93068-302	34013-314	82736-000	9.5"	64107-007		---	
	10.5	93068-303	34013-475	82736-100	10.0"	64107-008		79814-000	



**WARNING**

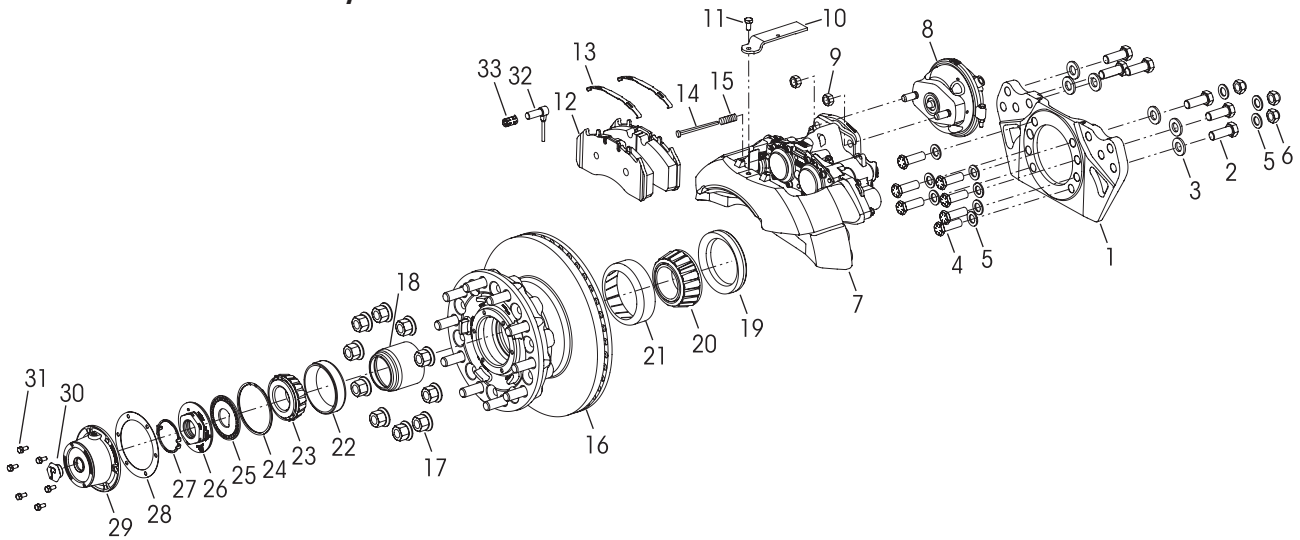
USE 1" FLAT WASHERS (PART NO. 22962-051) ONLY AS SPECIFIED IN TABLE 1 (LEAF SPRING AND CLAMP GROUP ASSEMBLY). TABLE 1 LISTS DIFFERENT CONFIGURATIONS FOR THIS ASSEMBLY. IN CERTAIN CONFIGURATIONS, THE CLAMP GROUP REQUIRES THE USE OF 1" FLAT WASHERS (PART NO. 22962-051) WITH THE SPECIFIED 1" HEX BOLT LENGTH, BUT NOT IN OTHER CONFIGURATIONS. IMPROPER CLAMP FORCE IN THE LEAF SPRING AND CLAMP GROUP ASSEMBLY, IMPROPER SEATING, AND COMPONENT DAMAGE CAN CAUSE LOSS OF VEHICLE CONTROL, ADVERSE VEHICLE HANDLING, PROPERTY DAMAGE, AND PERSONAL INJURY.

TABLE 2 Axle, Knuckle, Steering Arm, Tie Rod Arm and Tie Rod Assembly

Wheel Size	Steer Arm Configuration	Axle Assembly Key No. 38	Knuckle Assembly	Steering Arm	Tie Rod Arm Assembly		Tie Rod		
		Part No.	Right Hand Key No. 40	Right Hand Key No. 42	Left Hand Key No. 61	Right Hand Key No. 62	Assembly Key No. 66	End Key No. 67-68	Service
			Part No.	Part No.	Part No.	Part No.	Part No.	Part No.	Part No.
Max 12.25"	Single	93066-001	77243-102	---	77244-057	77244-058	Drop 79365-001	79366-001 (Left Hand)	60961-884 (Axle Set)
	Dual	93066-002						79366-002 (Right Hand)	60961-882 (LH) 60961-883 (RH)
13.00"	Dual	93066-009	77243-002	79685-003	77244-023	77244-024	Straight 80721-003	80745-001 (Left Hand) 80745-002 (Right Hand))	60961-890 (Axle Set) 60961-889 (LH) 60961-888 (RH)



### Air Disc Brake Assembly



KEY NO.	PART NO.	DESCRIPTION	VEHICLE QTY.	KEY NO.	PART NO.	DESCRIPTION	VEHICLE QTY.
1		*Meritor Torque Plate Assembly Left Hand, Part No. 3215-F-1878 Right Hand, Part No. 3215-E-1877	1 1	16		*Conmet Hub and Rotor Assembly Part No. 10083224, Includes Bearings and Seals *Conmet Brake Rotor Replacement Kit No. 10082181, One Wheel End, Includes Rotor and 10 of each Cap Screws and Washers	2
2	69781-002	M20 x 55 mm Hex Head Bolt	12	17		**M22 x 1.5 Two-piece Wheel Nut *Conmet Hub Bearing Rebuild Kit No. 10081728, One Wheel End, Includes Key Nos. 18-23 *Conmet Wheel Seal Kit No. 10081519, One Wheel End, Includes Key Nos. 18-19	20
3	58246-018	M20 Flat Washer, Replaces 58246-039	12	18		*Bearing Spacer Part No. 10034342	
4	80345-004	3/4"-16 UNC x 2 1/4" Low Profile Hex Head Bolt	14	19		*Wheel Seal Part No. 10045883	
5	22962-001	3/4" Flat Washer	20	20		*Inner Bearing Cone Part No. 10041922	
6	80691-001	3/4"-16 UNC Hex Nut	6	21		*Inner Bearing Cup Part No. 10041921	
7		*Meritor Air Disc Brake Caliper Assembly, Includes Key Nos. 10-11, 14-15 Left Hand, Part No. EX225H202XX000S Right Hand, Part No. EX225H201XX000S	1 1	22		*Outer Bearing Cup Part No. 10041923	
8		*WABCO Air Brake Chamber MGM T24L, Includes K80131-001 Key No. 9 Left Hand, Part No. 423 506 1340 Right Hand, Part No. 423 506 1350	1 1	23		*Outer Bearing Cone Part No. 10041924 *Conmet Preset Plus FL Nut Assembly Kit No. 10036550, Includes Key Nos. 24-27	
9		*Hex Nut *Meritor Disc Pad Retainer Kit No. 22510, Includes Key Nos. 10-11	4	24		*Snap Ring - Double Wind Part No. 10033288	
10		*Pad Retainer		25		*Spindle Nut Lockwasher Part No. 10031171	
11		*Pad Retainer Bolt *Meritor Air Disc Brake Pad Kit No. 2252H2CG, Includes Key Nos 12-13		26		*Outer Spindle Nut Part No. 10031170	
12		*Air Disc Brake Pad		27		*Snap Ring Retainer Part No. 10031172	
13		*ADB Pad Spring *Meritor Wear Indicator Kit No. 225255, Includes Key Nos. 14-15		28		*Drivparts Hub Cap Gasket No. G-3009	2
14		*Wear Indicator		29		*Drivparts Hub Cap Part No. 343-009, Includes Key No. 30	2
15		*Wear Indicator Spring		30		*Rubber Plug	
				31	64545-002	5/16"-18 UNC x 3/4" Hex Bolt with Retained Washer	12
				32		*WABCO ABS Sensor Part No. 441-032-900-0	2
				33	64550-000	ABS Sensor Clip	2

**NOTES:** \* Part not supplied by Hendrickson for aftermarket service purposes. Description and part number listed for reference only. For more information and assistance with service, maintenance, and rebuild instructions on these components see following component manufacturers:

- CONMET technical and parts support 800.547.9473 or online [aftermarket.conmetwheelends.com/hub-selection](http://aftermarket.conmetwheelends.com/hub-selection)
- DRIVPARTS technical and parts support 800.334.3210 or online [www.drivparts.com](http://www.drivparts.com)
- MERITOR technical and parts support 888.725.9355, or online for parts: [www.meritorpartsexpress.com](http://www.meritorpartsexpress.com) and for technical support: [www.meritorbullpen.com](http://www.meritorbullpen.com)
- WABCO technical and parts support 855.228.3203 or online [www.wabco-customercentre.com](http://www.wabco-customercentre.com)

\*\* Not supplied by Hendrickson, used for reference only. Contact vehicle manufacturer for more information.

This is a general parts list to provide directional information. Components may vary by model. Questions in regards to parts, contact Hendrickson Truck Parts at 1.866.755.5968 (Toll-free U.S. and Canada), 630.910.2800 (Outside U.S. and Canada) or email: [truckparts@hendrickson-intl.com](mailto:truckparts@hendrickson-intl.com).  
Actual product performance may vary depending upon vehicle configuration, operation, service and other factors.  
All applications must comply with applicable Hendrickson specifications and must be approved by the respective vehicle manufacturer with the vehicle in its original, as-built configuration.  
Contact Hendrickson for additional details regarding specifications, applications, capacities, and operation, service and maintenance instructions.

*Call Hendrickson at **1.866.755.5968** (toll-free) or **1.630.910.2800** for additional information.*



[www.hendrickson-intl.com](http://www.hendrickson-intl.com)

**TRUCK COMMERCIAL VEHICLE SYSTEMS**  
800 South Frontage Road  
Woodridge, IL 60517-4904 USA  
1.866.755.5968 (Toll-free U.S. and Canada)  
1.630.910.2800 (Outside U.S. and Canada)  
Fax 1.630.910.2899

SP-336 Rev B 08-23

© 2022 – 2023 Hendrickson USA, L.L.C. All Rights Reserved. All trademarks shown are owned by Hendrickson USA, L.L.C., or one of the affiliates, in one or more countries.

Information contained in this literature was accurate at the time of publication. Product changes may have been made after the copyright date that are not reflected.

Printed in United States of America