

H PARTS LIST

VANTRAX® HKARL 46K
RAMP READY

LIT NO: L1078

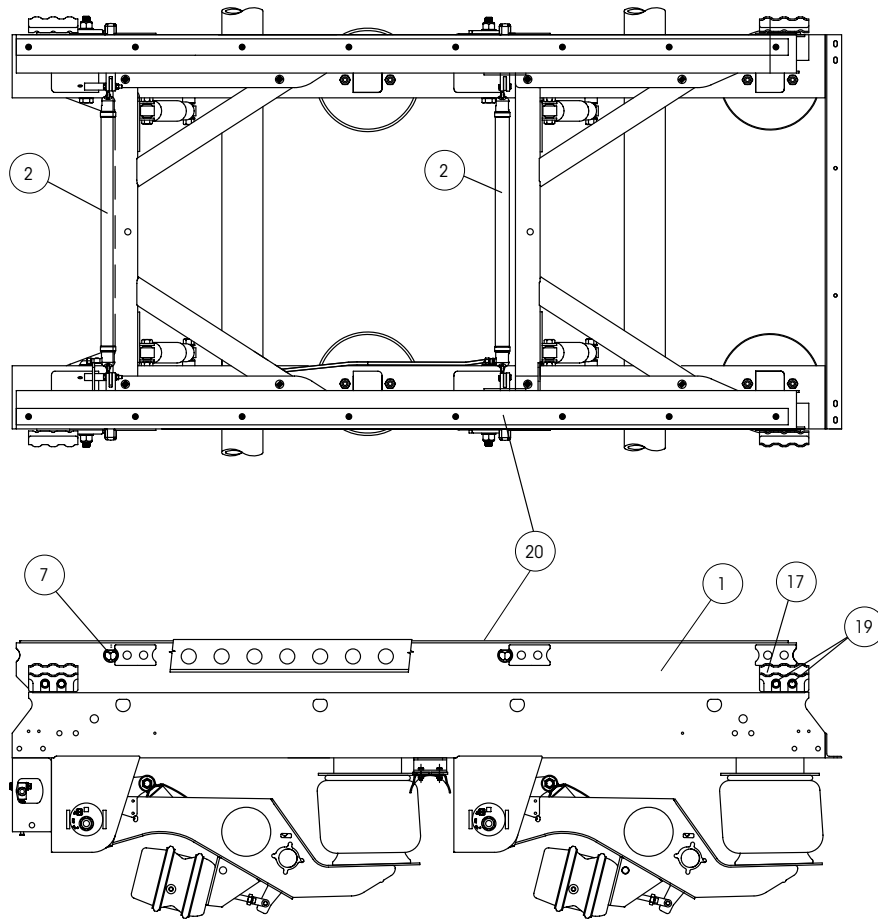
DATE: June 2019

REVISION: F



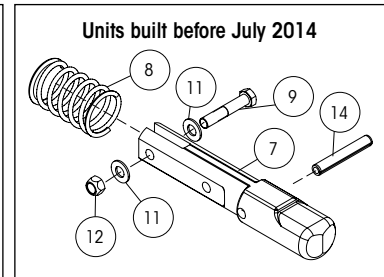
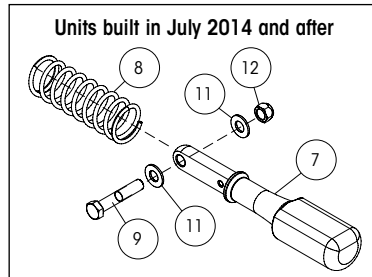
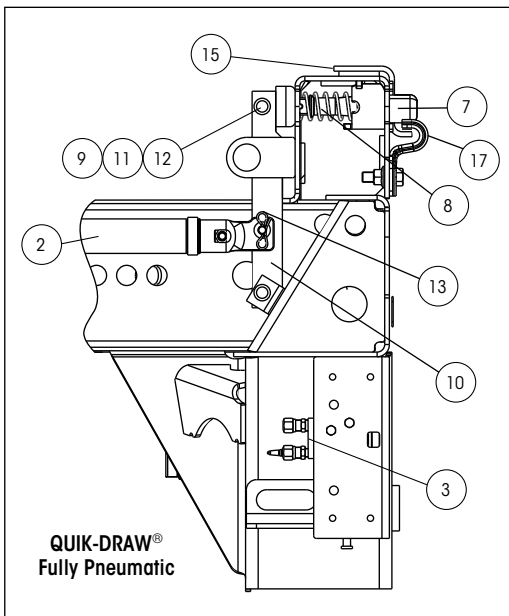


SLIDER BOX ASSEMBLY

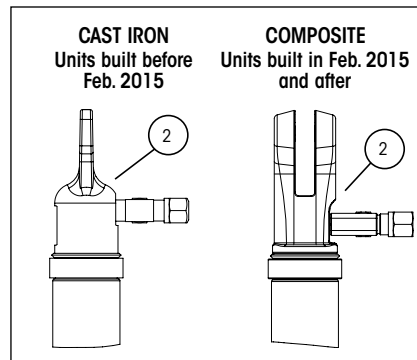


SLIDER PINS

PIN-PULL RELEASE MECHANISM



QUIK-DRAW® ACTUATOR ENDS

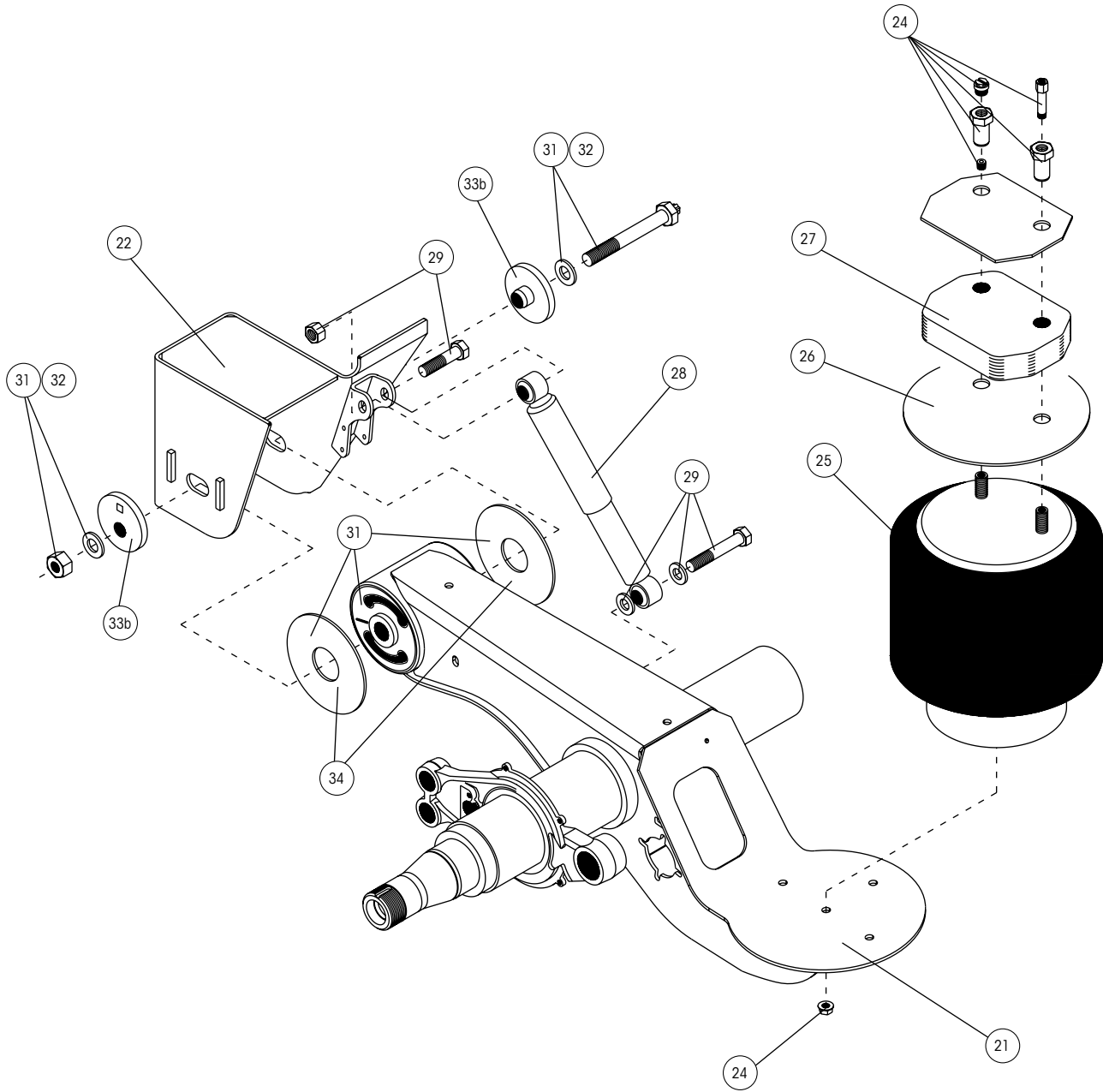




VANTRAX® HKARL 46K RAMP READY SLIDER PARTS LIST

ITEM	DESCRIPTION	PART NO.	SYSTEM QTY.	NOTE
1	AFTERMARKET SLIDER BOX REPLACEMENT	AMBOX.###	1	Contact Hendrickson for assistance
2	QUIK-DRAW® PNEUMATIC PIN-PULL MECHANISM			See L751 QUIK-DRAW Parts List
3	QUIK-DRAW VALVE			See L751 QUIK-DRAW Parts List
4	CRANK ARM (not shown)	B-24267	1	
5	CRANK (not shown)	B-24266	2	
6	ARM ACTUATOR (not shown)	B-24437	1	
7	LOCKING PIN			See L751 QUIK-DRAW Parts List
8	LOCKING PIN SPRING			See L751 QUIK-DRAW Parts List
9	LOCKING PIN BOLT			See L751 QUIK-DRAW Parts List
10	LOCKING PIN LINK			See L751 QUIK-DRAW Parts List
11	LOCKING PIN WASHER			See L751 QUIK-DRAW Parts List
12	LOCKING PIN NUT			See L751 QUIK-DRAW Parts List
13	LOCKING COTTER PIN			See L751 QUIK-DRAW Parts List
14	SPRING PIN (Units built before Sept. 2012)			See L751 QUIK-DRAW Parts List
15	PIPE WELDMENT (not shown)	S-21433-1	1	
16	LINK WELDMENT (not shown)	B-24413	1	
17	BODY RAIL CLIP			
		S-24460	4	Use with 1.375" locking pin with 6" hole centers
		S-24459	4	Use with 1.625" locking pin with 4" hole centers
		S-24459	4	Use with 1.375" locking pin with 4" hole centers (TTMA)
18	BODY RAIL CLIP SPACER (not shown)	A-22367	4	
19	BODY RAIL CLIP BOLTS	SA-6900-2	8	½" - 13 flanged screw
20	SLIDER WEAR PAD KIT	S-14342-3	2	Includes (1) slider wear pad and screws

Note: Identification can be found on the roadside slider box rail above the front frame bracket there will also be a blank VANTRAX tag on the inside of the curbside beam.





VANTRAA[®] HKARL 46K RAMP READY SLIDER PARTS LIST

ITEM	DESCRIPTION	PART NO.	SYSTEM QTY.	NOTE
21	AXLE BEAM WELDMENT	HTRAAX.###	2	Contact Hendrickson for assistance
22	FRAME BRACKETS			See L1266 Frame Bracket Parts List
23	ABS WELD-ON BRACKET (not shown)	S-27117	4	
24	AIR SPRING MOUNTING KIT	S-22631/2	4	A-22490-5 also required for 9" RH
25	AIR SPRING		4	
	9", 10" and 11" ride height	S-23613	4	
	12" ride height	S-23614	4	
26	AIR SPRING MOUNTING PLATE	S-23294	4	
27	AIR SPRING SPACER	B-22510-2	4	Not required for 9" RH
28	SHOCK ABSORBER			
	Drum Brakes	S-23566	4	
	Air Disk Brakes (not shown)	S-25436	4	
29	SHOCK BOLT KIT	S-24757/2	4	Includes (2) hardened washers, (1) shear type bolt, (1) shock spacer and hardware
30	SHOCK STRAP KIT (not shown)	C-23086-1	4	Includes (2) straps, clevis and ties
31	TRI-FUNCTIONAL [®] PIVOT BUSHING KIT ¹	S-24691	4	Includes (1) bushings, (1) pivot bolt kits (2) bushing tube spacers and lubricant pack
32	QUIK-ALIGN [®] PIVOT BOLT KIT	S-24679	4	Contains 7" bolt, nut and hardened washers
33	ALIGNMENT COLLAR			
	33a Concentric (inner)	S-20924	4	Pivot bolt hole is centered
	33b Eccentric (outer)	S-20925	4	Pivot bolt hole is offset from center
34	BUSHING TUBE SPACER	S-21099	8	Inner metal outer diameter dimension of TRI-FUNCTIONAL Bushing is 2.2"; inner hole dimension of BTS is 2.38"

OTHER PARTS LISTS

More information can be found in the following documents

Lit. Number	Description
L1055	SURELOK [®] Parts List
L1102	Slider Accessories and Axle Components Parts List
L949	RTR [®] READY-TO-ROLL [®] Parts List
L589	TRI-FUNCTIONAL [®] Bushing Replacement Tool
L1063	Air Disc Brakes Parts List
L1104	Brake Kits and Components Parts List

1. Bushing tool S-21307 is required to correctly re-bush the suspension.

Note: Identification can be found on the roadside slider box rail above the front frame bracket there will also be a blank VANTRAA[®] tag on the inside of the curbside beam.



NOTES:

Multiple horizontal lines for notes.

Actual product performance may vary depending upon vehicle configuration, operation, service and other factors.

All applications must comply with applicable Hendrickson specifications and must be approved by the respective vehicle manufacturer with the vehicle in its original, as-built configuration.

Contact Hendrickson for additional details regarding specifications, applications, capacities, and operation, service and maintenance instructions.

Call Hendrickson at 330.489.0045 or 866.RIDEAIR (743.3247) for additional information.



www.hendrickson-intl.com

TRAILER COMMERCIAL VEHICLE SYSTEMS

2070 Industrial Place SE
Canton, OH 44707-2641 USA
866.RIDEAIR (743.3247)
330.489.0045 • Fax 800.696.4416

Hendrickson Canada

250 Chrysler Drive, Unit #3
Brampton, ON Canada L6S 6B6
800.668.5360
905.789.1030 • Fax 905.789.1033

Hendrickson Mexicana

Circuito El Marqués Sur #29
Parque Industrial El Marqués
Pob. El Colorado, Municipio El Marqués,
Querétaro, México C.P. 76246
+52 (442) 296.3600 • Fax +52 (442) 296.3601