

BULLETIN

HAC-SERIES AIR KITS

LIT NO: H723

DATE: November 2010

Hendrickson Auxiliary Axle's new HAC-series air kit line has been designed to provide excellent reliability in your lift axle application. Air kits, however, are exposed to water and contaminant-filled air on a daily basis and do require preventative maintenance to ensure proper performance. Regular inspection, as a part of your preventative maintenance protocol, as well as daily operation checks should be performed. Below are guidelines for inspection and maintenance:

Area of Inspection	Maintenance Item	Resolution
Installation	Constant leak through exhaust	For Generation 1 air kits, ensure that supply pressure is >55psi and that the lift axle is in the 'up' position. Once supply pressure exceeds 55psi, lift axle can be deployed. Repeat this process as necessary.
Nonresponsive up and down function (manually and when using reverse-signal where applicable)	Spool R-009796-Z	Inspect spool for ease of removal and lubrication being present. If spool requires more than a tap to remove, replacement is required (see contamination). If lubrication is not visible, add lubrication.
System leak	Solenoid R-009797	a.) Remove solenoid by unscrewing the cap, clean with shop air and replace b.) If step a.) does not resolve, replace solenoid armature
	Regulator R-009794	a.) Ensure that plastic nut is snug b.) If step a.) does not resolve, replace regulator
	Gauge R-009793	a.) Ensure inlet and delivery port lines are snug b.) If step a.) does not resolve, replace gauge
Contamination <i>(De-icing agents, and other chemicals are not recommended for interaction with HAC kits and call for increased maintenance to ensure adequate operation if used)</i>	Spool R-009796-Z	The cleaner the air, the better the expected performance of the air kit. Ensure that air dryer and compressors are serviced with new filters and compression rings. If contaminants are found in the system and detected by a 'sticking' valve, replace the spool.

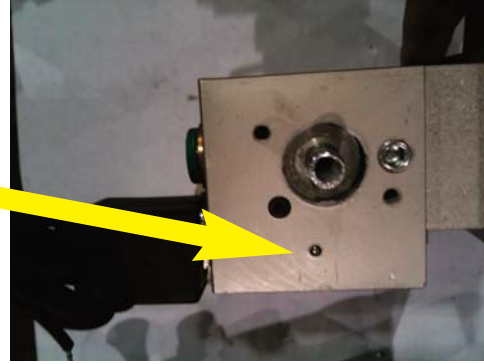
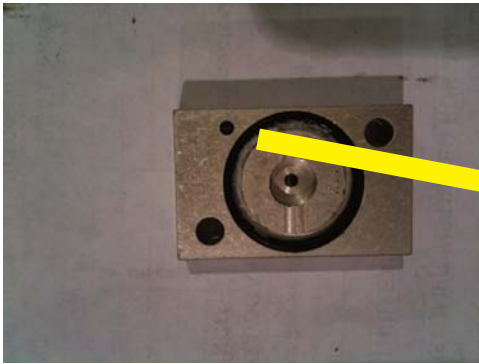
Reference Pictures:



Generation 1 Kit (2-dimples)



Generation 2 Kit (6-dimples)



Spool Replacement (orient per arrow)



Spools (Gen 2 on left and Gen 1 on right)
Gen 2 spools will work in Gen 1 kits, but
Gen 1 spools will not work in Gen 2 kits.



Solenoid Armature Replacement (2-screws)

www.hendrickson-intl.com



Auxiliary Axle Systems
277 North High Street
Hebron, OH 43025 USA
740.929.5600
Fax 740.929.5601

Auxiliary Axle Systems
250 Chrysler Drive, Unit #3
Brampton, ON L6S 6B6 Canada
905.789.1030
Fax 905.789.1033