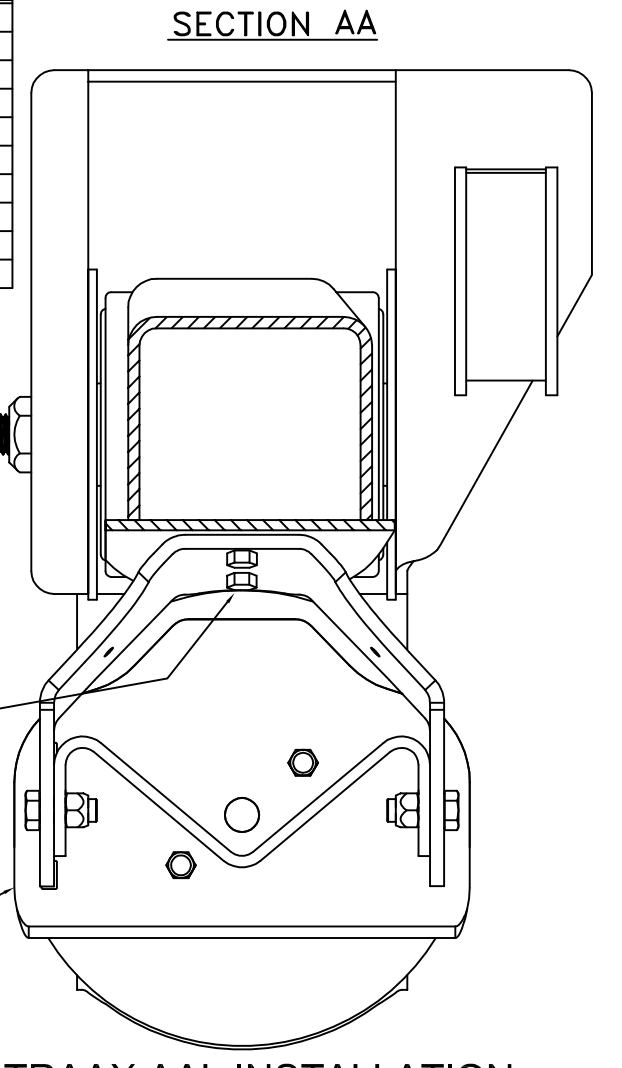


ITEM	PART NO.	DESCRIPTION	QTY.
1	A-24614	LIFT ASSEMBLY BOLT KIT	1
2	C-23114	AIR SPRING	2
3	C-28537C	LIFT BRACKET	2
4	B-27945	BEAM PLATE ASS'Y	2
5	D-24658C	HANGER SUPPORT, LIFT	2
6	B-2901-37	.25 GUSSET	4
7	*A-26828	IDENTIFICATION TAG	1
8	**DWG D-24657	UBL-002	1
9	*A-21066	RIVET, DRIVE	1
10	*T91001	UBL HARDWARE KIT INFORMATION	1

- * NOT SHOWN
 ** DWG PART NUMBER REVISION MUST MATCH REVISION OF DOCUMENT.
- NOTES:
- 12 RIDE HEIGHT SHOWN, INSTALLATION IS SAME FOR ALL RIDE HEIGHTS.
 - WEIGHT: 59.01 LB
INCLUDES 1.16 LB FOR WELD
 - IF GAP EXISTS BETWEEN LIFT BRACKET (ITEM 3) AND BEAM PLATE ASS'Y (ITEM 4), USE A C-CLAMP TO COMPRESS LEGS OF LIFT BRACKET TO ALLOW BEAM PLATE ASSEMBLY TO FIT.
 - WELD:
28.5 VOLTS, 400 IPM, 275-300 AMPS, 35 CFH (GAS FLOW), .045 WIRE
FILL ALL CRATERS AT END OF WELDS.
WELD DIRECTION:
5. AAL 30K REQUIRES A CROSSOVER AIR CONTROL KIT.
STOP START
 - UBL-002 INTENDED FOR USE WITH CARBON STEEL FRAME BRACKETS ONLY. USE UBL-201 OR UBL-202 FOR STAINLESS STEEL FRAME BRACKETS.



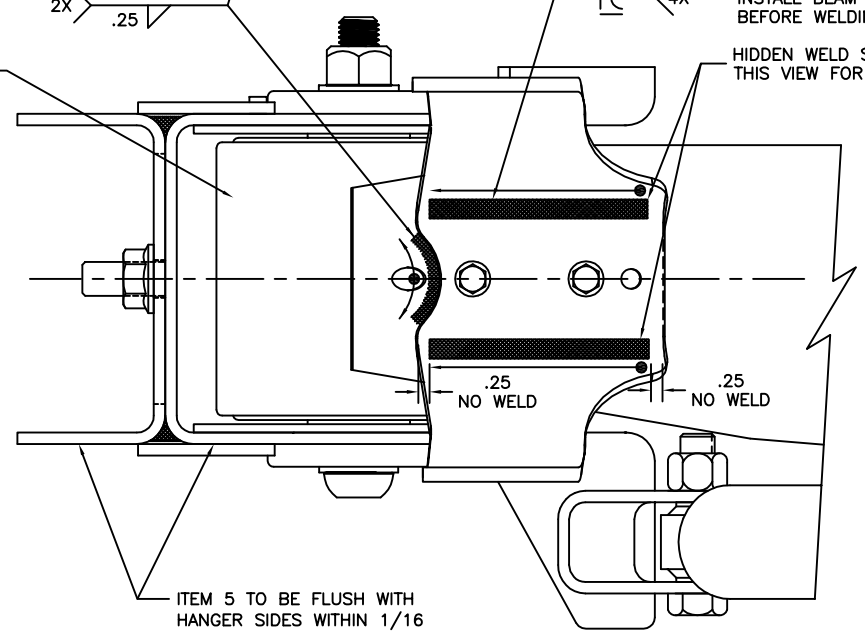
IMPORTANT!
 IF CROSS CHANNEL IS REQUIRED INSTALL HANGER SUPPORT BRACKET (ITEM 5) FIRST, REST CHANNEL ON TOP OF BRACKET SURFACE AND WELD AS SHOWN.

IF RETROFIT, TAKE OFF CHANNEL AND RELOCATE.

- ASSEMBLY PROCEDURE:
- 1 LOCATE LIFT BRACKETS (ITEM 3) WITH SELF-TAPPING SCREWS.
 - 2 INSTALL BEAM PLATE ASSEMBLIES (ITEM 4) TO LIMIT DISTORTION OF LIFT BRACKETS (ITEM 3) DURING WELDING.
 3. WELD TO BEAMS AS SHOWN.
 - 4 LOCATE TOP OF HANGER SUPPORT ASSEMBLY (ITEM 5) 3 5/8 FROM BOTTOM OF HANGERS AND WELD AS SHOWN.
 - 5 LOCATE AND WELD "C" CHANNEL AS SHOWN IF REQUIRED.
 - 6 IF PARKING BRAKES ARE REQUIRED, INSTALL AT THIS TIME.
 7. INSTALL AIR SPRINGS (ITEM 2).

This Print remains the property of Hendrickson. All information contained thereon is confidential. It is loaned, subject to return on demand and on express condition that it is not to be copied or used directly or indirectly for any purpose other than the purpose for which it has been loaned to you.

TORQUE SPECIFICATIONS		
DESCRIPTION	SIZE	TORQUE(FT-LB)
AIR SPRING BOLTS	3/8-16	25-35
AIR SPRING NUT	3/4-16	45-55
BEAM PLATE ASSEMBLY BOLTS	1/2-13	55-75
BRAKE CHAMBER MTG. NUTS	5/8-11	100-110
SELF TAPPING SCREWS	3/8	160-180 IN-LB

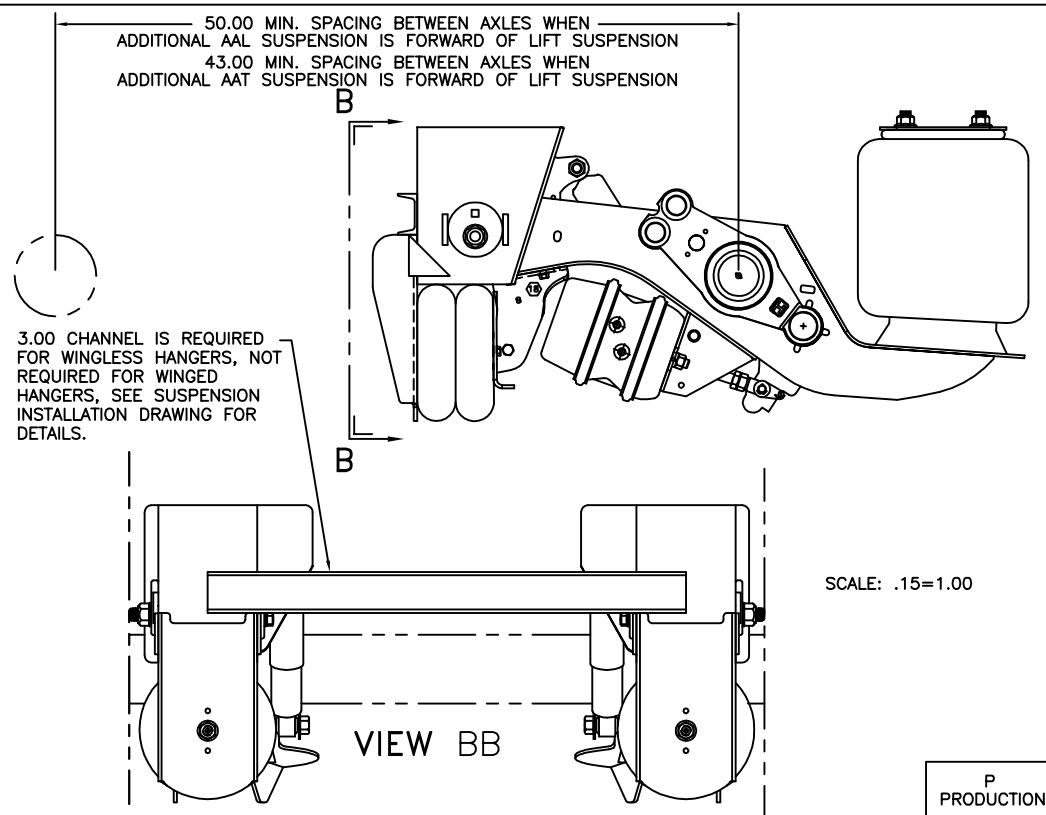


WARNING!
 SELF TAPPING SCREWS ARE FOR LOCATION ONLY. LIFT BRACKET (ITEM 3) MUST BE WELDED AS SHOWN.

REAR SELF-TAPPING SCREW MAY NEED TO BE REMOVED AFTER WELDING OPERATION WHEN LONG STROKE BRAKE CHAMBERS ARE USED.

IMPORTANT!
 REMOVE BEAM PLATE ASSEMBLIES (TWO 1/2 BOLTS) TO INSTALL OR REMOVE PARKING BRAKE CHAMBERS. DOES NOT APPLY TO SERVICE BRAKE CHAMBERS.

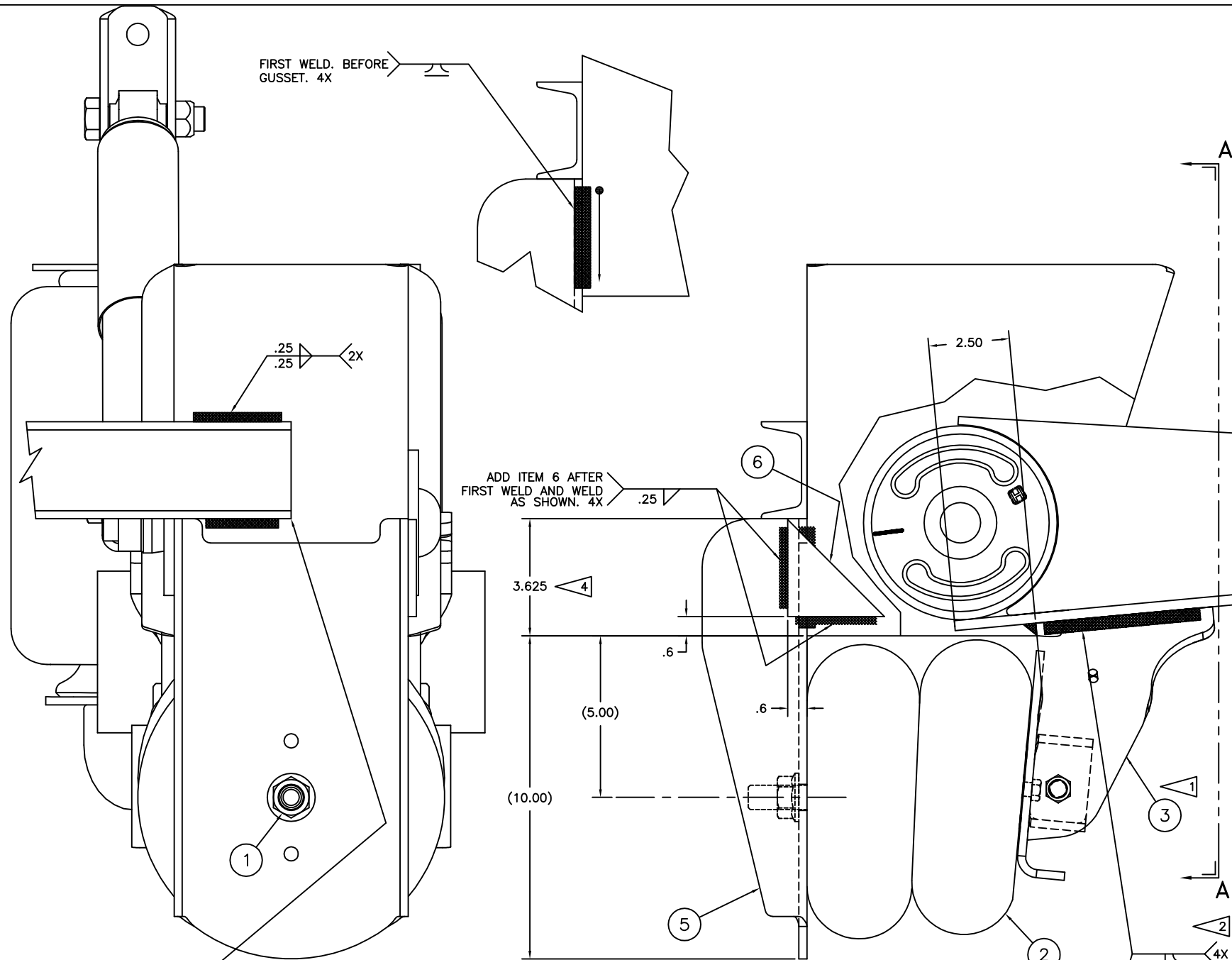
IMPORTANT!
 INSTALL BEAM PLATE ASSEMBLIES BEFORE WELDING.



PART NUMBER	REV
UBL-002	20

HENDRICKSON
 TRAILER COMMERCIAL VEHICLE SYSTEMS
 8025 INDUSTRIAL PLACE, E. CHRYSLER, OH 43002-3000, U.S.A.

UNLESS OTHERWISE NOTED, DIMENSIONS ARE IN INCHES
 .125 ± .015
 .1875 ± .015
 .250 ± .015
 .3125 ± .015
 .375 ± .015
 .4375 ± .015
 .500 ± .015
 .5625 ± .015
 .625 ± .015
 .6875 ± .015
 .750 ± .015
 .8125 ± .015
 .875 ± .015
 .9375 ± .015
 1.000 ± .015
 1.125 ± .015
 1.250 ± .015
 1.375 ± .015
 1.500 ± .015
 1.625 ± .015
 1.750 ± .015
 1.875 ± .015
 2.000 ± .015
 2.125 ± .015
 2.250 ± .015
 2.375 ± .015
 2.500 ± .015
 2.625 ± .015
 2.750 ± .015
 2.875 ± .015
 3.000 ± .015
 3.125 ± .015
 3.250 ± .015
 3.375 ± .015
 3.500 ± .015
 3.625 ± .015
 3.750 ± .015
 3.875 ± .015
 4.000 ± .015
 4.125 ± .015
 4.250 ± .015
 4.375 ± .015
 4.500 ± .015
 4.625 ± .015
 4.750 ± .015
 4.875 ± .015
 5.000 ± .015
 5.125 ± .015
 5.250 ± .015
 5.375 ± .015
 5.500 ± .015
 5.625 ± .015
 5.750 ± .015
 5.875 ± .015
 6.000 ± .015
 6.125 ± .015
 6.250 ± .015
 6.375 ± .015
 6.500 ± .015
 6.625 ± .015
 6.750 ± .015
 6.875 ± .015
 7.000 ± .015
 7.125 ± .015
 7.250 ± .015
 7.375 ± .015
 7.500 ± .015
 7.625 ± .015
 7.750 ± .015
 7.875 ± .015
 8.000 ± .015
 8.125 ± .015
 8.250 ± .015
 8.375 ± .015
 8.500 ± .015
 8.625 ± .015
 8.750 ± .015
 8.875 ± .015
 9.000 ± .015
 9.125 ± .015
 9.250 ± .015
 9.375 ± .015
 9.500 ± .015
 9.625 ± .015
 9.750 ± .015
 9.875 ± .015
 10.000 ± .015
 10.125 ± .015
 10.250 ± .015
 10.375 ± .015
 10.500 ± .015
 10.625 ± .015
 10.750 ± .015
 10.875 ± .015
 11.000 ± .015
 11.125 ± .015
 11.250 ± .015
 11.375 ± .015
 11.500 ± .015
 11.625 ± .015
 11.750 ± .015
 11.875 ± .015
 12.000 ± .015
 12.125 ± .015
 12.250 ± .015
 12.375 ± .015
 12.500 ± .015
 12.625 ± .015
 12.750 ± .015
 12.875 ± .015
 13.000 ± .015
 13.125 ± .015
 13.250 ± .015
 13.375 ± .015
 13.500 ± .015
 13.625 ± .015
 13.750 ± .015
 13.875 ± .015
 14.000 ± .015
 14.125 ± .015
 14.250 ± .015
 14.375 ± .015
 14.500 ± .015
 14.625 ± .015
 14.750 ± .015
 14.875 ± .015
 15.000 ± .015
 15.125 ± .015
 15.250 ± .015
 15.375 ± .015
 15.500 ± .015
 15.625 ± .015
 15.750 ± .015
 15.875 ± .015
 16.000 ± .015
 16.125 ± .015
 16.250 ± .015
 16.375 ± .015
 16.500 ± .015
 16.625 ± .015
 16.750 ± .015
 16.875 ± .015
 17.000 ± .015
 17.125 ± .015
 17.250 ± .015
 17.375 ± .015
 17.500 ± .015
 17.625 ± .015
 17.750 ± .015
 17.875 ± .015
 18.000 ± .015
 18.125 ± .015
 18.250 ± .015
 18.375 ± .015
 18.500 ± .015
 18.625 ± .015
 18.750 ± .015
 18.875 ± .015
 19.000 ± .015
 19.125 ± .015
 19.250 ± .015
 19.375 ± .015
 19.500 ± .015
 19.625 ± .015
 19.750 ± .015
 19.875 ± .015
 20.000 ± .015
 20.125 ± .015
 20.250 ± .015
 20.375 ± .015
 20.500 ± .015
 20.625 ± .015
 20.750 ± .015
 20.875 ± .015
 21.000 ± .015
 21.125 ± .015
 21.250 ± .015
 21.375 ± .015
 21.500 ± .015
 21.625 ± .015
 21.750 ± .015
 21.875 ± .015
 22.000 ± .015
 22.125 ± .015
 22.250 ± .015
 22.375 ± .015
 22.500 ± .015
 22.625 ± .015
 22.750 ± .015
 22.875 ± .015
 23.000 ± .015
 23.125 ± .015
 23.250 ± .015
 23.375 ± .015
 23.500 ± .015
 23.625 ± .015
 23.750 ± .015
 23.875 ± .015
 24.000 ± .015
 24.125 ± .015
 24.250 ± .015
 24.375 ± .015
 24.500 ± .015
 24.625 ± .015
 24.750 ± .015
 24.875 ± .015
 25.000 ± .015
 25.125 ± .015
 25.250 ± .015
 25.375 ± .015
 25.500 ± .015
 25.625 ± .015
 25.750 ± .015
 25.875 ± .015
 26.000 ± .015
 26.125 ± .015
 26.250 ± .015
 26.375 ± .015
 26.500 ± .015
 26.625 ± .015
 26.750 ± .015
 26.875 ± .015
 27.000 ± .015
 27.125 ± .015
 27.250 ± .015
 27.375 ± .015
 27.500 ± .015
 27.625 ± .015
 27.750 ± .015
 27.875 ± .015
 28.000 ± .015
 28.125 ± .015
 28.250 ± .015
 28.375 ± .015
 28.500 ± .015
 28.625 ± .015
 28.750 ± .015
 28.875 ± .015
 29.000 ± .015
 29.125 ± .015
 29.250 ± .015
 29.375 ± .015
 29.500 ± .015
 29.625 ± .015
 29.750 ± .015
 29.875 ± .015
 30.000 ± .015
 30.125 ± .015
 30.250 ± .015
 30.375 ± .015
 30.500 ± .015
 30.625 ± .015
 30.750 ± .015
 30.875 ± .015
 31.000 ± .015
 31.125 ± .015
 31.250 ± .015
 31.375 ± .015
 31.500 ± .015
 31.625 ± .015
 31.750 ± .015
 31.875 ± .015
 32.000 ± .015
 32.125 ± .015
 32.250 ± .015
 32.375 ± .015
 32.500 ± .015
 32.625 ± .015
 32.750 ± .015
 32.875 ± .015
 33.000 ± .015
 33.125 ± .015
 33.250 ± .015
 33.375 ± .015
 33.500 ± .015
 33.625 ± .015
 33.750 ± .015
 33.875 ± .015
 34.000 ± .015
 34.125 ± .015
 34.250 ± .015
 34.375 ± .015
 34.500 ± .015
 34.625 ± .015
 34.750 ± .015
 34.875 ± .015
 35.000 ± .015
 35.125 ± .015
 35.250 ± .015
 35.375 ± .015
 35.500 ± .015
 35.625 ± .015
 35.750 ± .015
 35.875 ± .015
 36.000 ± .015
 36.125 ± .015
 36.250 ± .015
 36.375 ± .015
 36.500 ± .015
 36.625 ± .015
 36.750 ± .015
 36.875 ± .015
 37.000 ± .015
 37.125 ± .015
 37.250 ± .015
 37.375 ± .015
 37.500 ± .015
 37.625 ± .015
 37.750 ± .015
 37.875 ± .015
 38.000 ± .015
 38.125 ± .015
 38.250 ± .015
 38.375 ± .015
 38.500 ± .015
 38.625 ± .015
 38.750 ± .015
 38.875 ± .015
 39.000 ± .015
 39.125 ± .015
 39.250 ± .015
 39.375 ± .015
 39.500 ± .015
 39.625 ± .015
 39.750 ± .015
 39.875 ± .015
 40.000 ± .015
 40.125 ± .015
 40.250 ± .015
 40.375 ± .015
 40.500 ± .015
 40.625 ± .015
 40.750 ± .015
 40.875 ± .015
 41.000 ± .015
 41.125 ± .015
 41.250 ± .015
 41.375 ± .015
 41.500 ± .015
 41.625 ± .015
 41.750 ± .015
 41.875 ± .015
 42.000 ± .015
 42.125 ± .015
 42.250 ± .015
 42.375 ± .015
 42.500 ± .015
 42.625 ± .015
 42.750 ± .015
 42.875 ± .015
 43.000 ± .015
 43.125 ± .015
 43.250 ± .015
 43.375 ± .015
 43.500 ± .015
 43.625 ± .015
 43.750 ± .015
 43.875 ± .015
 44.000 ± .015
 44.125 ± .015
 44.250 ± .015
 44.375 ± .015
 44.500 ± .015
 44.625 ± .015
 44.750 ± .015
 44.875 ± .015
 45.000 ± .015
 45.125 ± .015
 45.250 ± .015
 45.375 ± .015
 45.500 ± .015
 45.625 ± .015
 45.750 ± .015
 45.875 ± .015
 46.000 ± .015
 46.125 ± .015
 46.250 ± .015
 46.375 ± .015
 46.500 ± .015
 46.625 ± .015
 46.750 ± .015
 46.875 ± .015
 47.000 ± .015
 47.125 ± .015
 47.250 ± .015
 47.375 ± .015
 47.500 ± .015
 47.625 ± .015
 47.750 ± .015
 47.875 ± .015
 48.000 ± .015
 48.125 ± .015
 48.250 ± .015
 48.375 ± .015
 48.500 ± .015
 48.625 ± .015
 48.750 ± .015
 48.875 ± .015
 49.000 ± .015
 49.125 ± .015
 49.250 ± .015
 49.375 ± .015
 49.500 ± .015
 49.625 ± .015
 49.750 ± .015
 49.875 ± .015
 50.000 ± .015
 50.125 ± .015
 50.250 ± .015
 50.375 ± .015
 50.500 ± .015
 50.625 ± .015
 50.750 ± .015
 50.875 ± .015
 51.000 ± .015
 51.125 ± .015
 51.250 ± .015
 51.375 ± .015
 51.500 ± .015
 51.625 ± .015
 51.750 ± .015
 51.875 ± .015
 52.000 ± .015
 52.125 ± .015
 52.250 ± .015
 52.375 ± .015
 52.500 ± .015
 52.625 ± .015
 52.750 ± .015
 52.875 ± .015
 53.000 ± .015
 53.125 ± .015
 53.250 ± .015
 53.375 ± .015
 53.500 ± .015
 53.625 ± .015
 53.750 ± .015
 53.875 ± .015
 54.000 ± .015
 54.125 ± .015
 54.250 ± .015
 54.375 ± .015
 54.500 ± .015
 54.625 ± .015
 54.750 ± .015
 54.875 ± .015
 55.000 ± .015
 55.125 ± .015
 55.250 ± .015
 55.375 ± .015
 55.500 ± .015
 55.625 ± .015
 55.750 ± .015
 55.875 ± .015
 56.000 ± .015
 56.125 ± .015
 56.250 ± .015
 56.375 ± .015
 56.500 ± .015
 56.625 ± .015
 56.750 ± .015
 56.875 ± .015
 57.000 ± .015
 57.125 ± .015
 57.250 ± .015
 57.375 ± .015
 57.500 ± .015
 57.625 ± .015
 57.750 ± .015
 57.875 ± .015
 58.000 ± .015
 58.125 ± .015
 58.250 ± .015
 58.375 ± .015
 58.500 ± .015
 58.625 ± .015
 58.750 ± .015
 58.875 ± .015
 59.000 ± .015
 59.125 ± .015
 59.250 ± .015
 59.375 ± .015
 59.500 ± .015
 59.625 ± .015
 59.750 ± .015
 59.875 ± .015
 60.000 ± .015
 60.125 ± .015
 60.250 ± .015
 60.375 ± .015
 60.500 ± .015
 60.625 ± .015
 60.750 ± .015
 60.875 ± .015
 61.000 ± .015
 61.125 ± .015
 61.250 ± .015
 61.375 ± .015
 61.500 ± .015
 61.625 ± .015
 61.750 ± .015
 61.875 ± .015
 62.000 ± .015
 62.125 ± .015
 62.250 ± .015
 62.375 ± .015
 62.500 ± .015
 62.625 ± .015
 62.750 ± .015
 62.875 ± .015
 63.000 ± .015
 63.125 ± .015
 63.250 ± .015
 63.375 ± .015
 63.500 ± .015
 63.625 ± .015
 63.750 ± .015
 63.875 ± .015
 64.000 ± .015
 64.125 ± .015
 64.250 ± .015
 64.375 ± .015
 64.500 ± .015
 64.625 ± .015
 64.750 ± .015
 64.875 ± .015
 65.000 ± .015
 65.125 ± .015
 65.250 ± .015
 65.375 ± .015
 65.500 ± .015
 65.625 ± .015
 65.750 ± .015
 65.875 ± .015
 66.000 ± .015
 66.125 ± .015
 66.250 ± .015
 66.375 ± .015
 66.500 ± .015
 66.625 ± .015
 66.750 ± .015
 66.875 ± .015
 67.000 ± .015
 67.125 ± .015
 67.250 ± .015
 67.375 ± .015
 67.500 ± .015
 67.625 ± .015
 67.750 ± .015
 67.875 ± .015
 68.000 ± .015
 68.125 ± .015
 68.250 ± .015
 68.375 ± .015
 68.500 ± .015
 68.625 ± .015
 68.750 ± .015
 68.875 ± .015
 69.000 ± .015
 69.125 ± .015
 69.250 ± .015
 69.375 ± .015
 69.500 ± .015
 69.625 ± .015
 69.750 ± .015
 69.875 ± .015
 70.000 ± .015
 70.125 ± .015
 70.250 ± .015
 70.375 ± .015
 70.500 ± .015
 70.625 ± .015
 70.750 ± .015
 70.875 ± .015
 71.000 ± .015
 71.125 ± .015
 71.250 ± .015
 71.375 ± .015
 71.500 ± .015
 71.625 ± .015
 71.750 ± .015
 71.875 ± .015
 72.000 ± .015
 72.125 ± .015
 72.250 ± .015
 72.375 ± .015
 72.500 ± .015
 72.625 ± .015
 72.750 ± .015
 72.875 ± .015
 73.000 ± .015
 73.125 ± .015
 73.250 ± .015
 73.375 ± .015
 73.500 ± .015
 73.625 ± .015
 73.750 ± .015
 73.875 ± .015
 74.000 ± .015
 74.125 ± .015
 74.250 ± .015
 74.375 ± .015
 74.500 ± .015
 74.625 ± .015
 74.750 ± .015
 74.875 ± .015
 75.000 ± .015
 75.125 ± .015
 75.250 ± .015
 75.375 ± .015
 75.500 ± .015
 75.625 ± .015



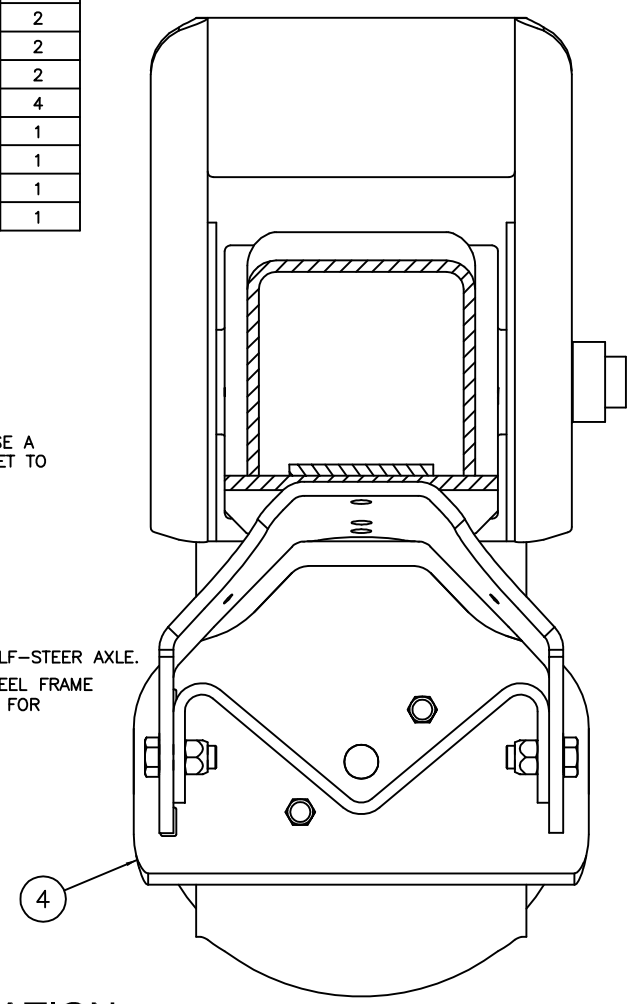
ITEM	PART NO.	DESCRIPTION	QTY.
1	A-24614	LIFT ASSEMBLY BOLT KIT	1
2	C-23114	AIR SPRING	2
3	C-28537C	LIFT BRACKET	2
4	B-27945	BEAM PLATE ASS'Y	2
5	D-24658C	HANGER SUPPORT, LIFT	2
6	B-2901-37	.25 GUSSET	4
7	*A-26828	IDENTIFICATION TAG	1
8	**DWG D-24657	UBL-002	1
9	*A-21066	RIVET, DRIVE	1
10	*T91001	UBL HARDWARE KIT INFORMATION	1

* NOT SHOWN
 ** DWG PART NUMBER REVISION MUST MATCH REVISION OF DOCUMENT.

NOTES:

- 12 RIDE HEIGHT SHOWN, INSTALLATION IS SAME FOR ALL RIDE HEIGHTS.
- WEIGHT: 59.01 LB
INCLUDES 1.16 LB FOR WELD
- IF GAP EXISTS BETWEEN LIFT BRACKET (ITEM 3) AND BEAM PLATE ASS'Y (ITEM 4), USE A C-CLAMP TO COMPRESS LEGS OF LIFT BRACKET TO ALLOW BEAM PLATE ASSEMBLY TO FIT.
- WELD:
28.5 VOLTS, 400 IPM, 275-300 AMPS, 35 CFH (GAS FLOW), .045 WIRE
FILL ALL CRATERS AT END OF WELDS.
WELD DIRECTION:
STOP START
- DO NOT USE THIS LIFT KIT WITH DUAL TIRE SELF-STEER AXLE.
- UBL-002 INTENDED FOR USE WITH CARBON STEEL FRAME BRACKETS ONLY. USE UBL-201 OR UBL-202 FOR STAINLESS STEEL FRAME BRACKETS.

SECTION AA

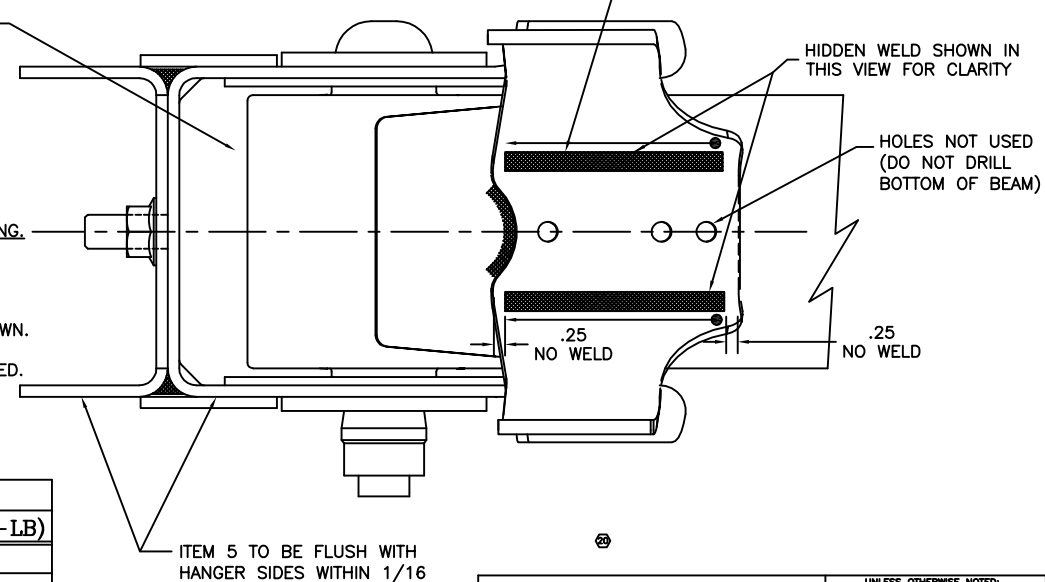


IMPORTANT!
 IF CROSS CHANNEL IS REQUIRED INSTALL HANGER SUPPORT BRACKET (ITEM 5) FIRST, REST CHANNEL ON TOP OF BRACKET SURFACE AND WELD AS SHOWN.
 IF RETROFIT, TAKE OFF CHANNEL AND RELOCATE.

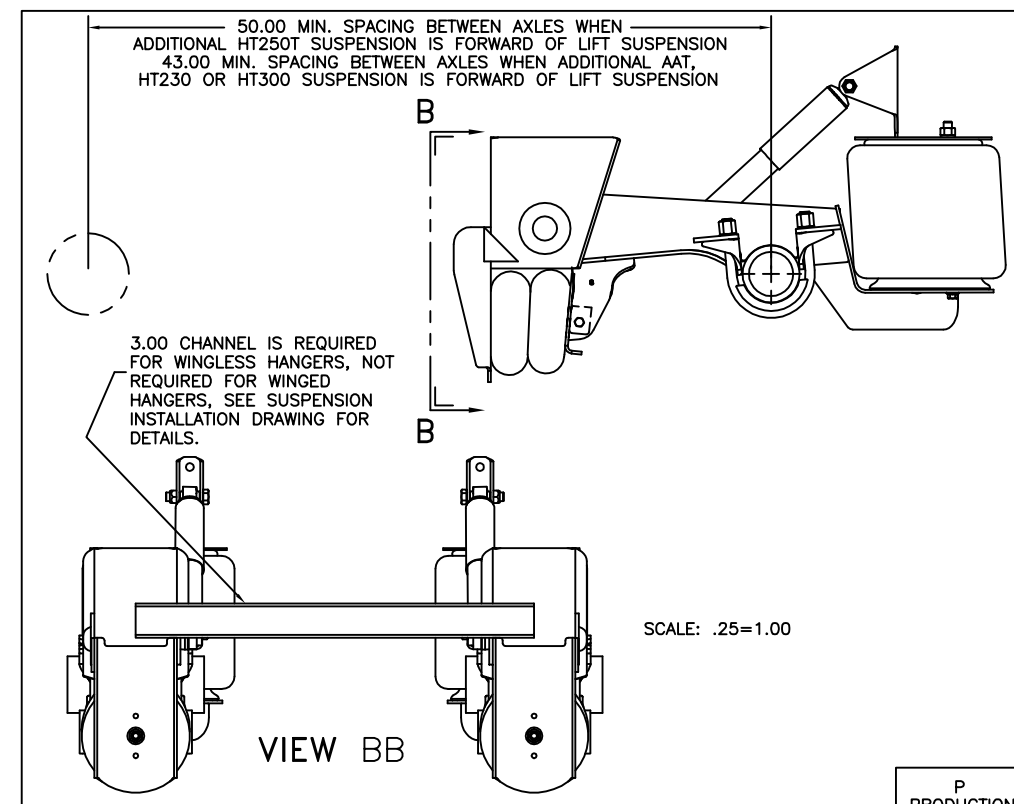
- ASSEMBLY PROCEDURE:
- 1 LOCATE LIFT BRACKETS (ITEM 3) AND CLAMP INTO PLACE. HOLES IN LIFT BRACKETS NOT USED (DO NOT DRILL BEAM).
 - 2 INSTALL BEAM PLATE ASSEMBLIES (ITEM 4) TO LIMIT DISTORTION OF LIFT BRACKETS (ITEM 3) DURING WELDING.
 3. WELD TO BEAMS AS SHOWN.
 - 4 LOCATE TOP OF HANGER SUPPORT ASSEMBLY (ITEM 5) 3 5/8 FROM BOTTOM OF HANGERS AND WELD AS SHOWN.
 - 5 LOCATE AND WELD "C" CHANNEL AS SHOWN IF REQUIRED.
 6. INSTALL AIR SPRINGS (ITEM 2).

TORQUE SPECIFICATIONS		
DESCRIPTION	SIZE	TORQUE (FT-LB)
AIR SPRING BOLTS	3/8-16	25-35
AIR SPRING NUT	3/4-16	45-55
BEAM PLATE ASSEMBLY BOLTS	1/2-13	55-75

IMPORTANT!
 INSTALL BEAM PLATE ASSEMBLIES BEFORE WELDING.



HT250T INSTALLATION



This Print remains the property of Hendrickson. All information contained thereon is confidential. It is loaned, subject to return on demand and on express condition that it is not to be copied or used directly or indirectly for any purpose other than the purpose for which it has been loaned to you.