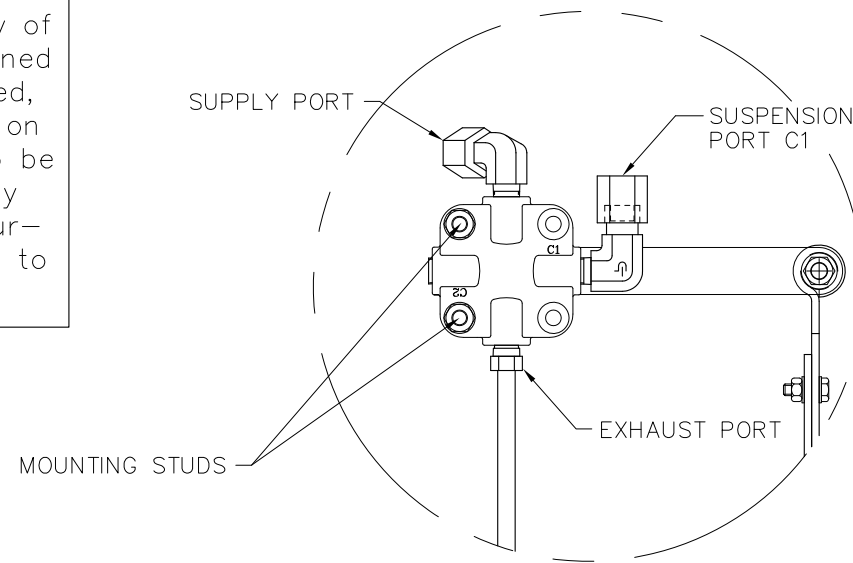
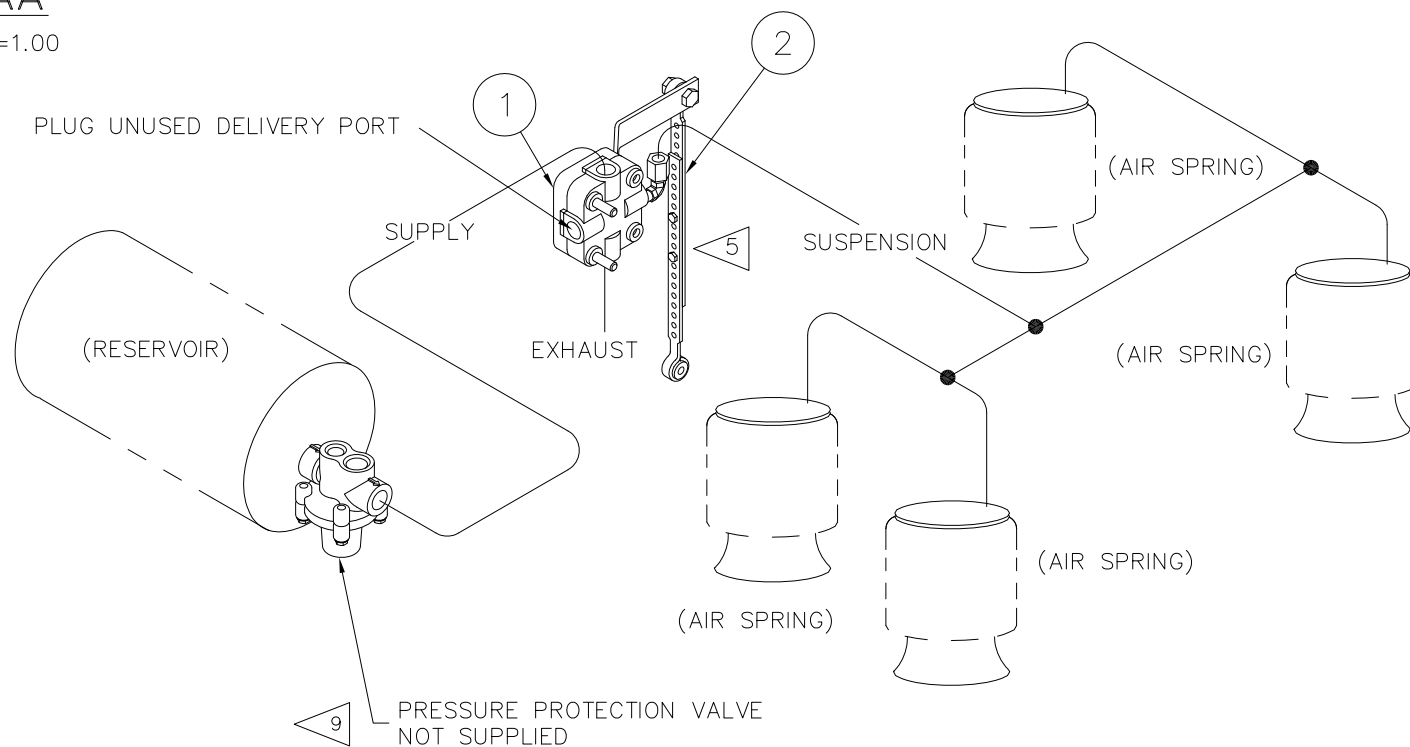
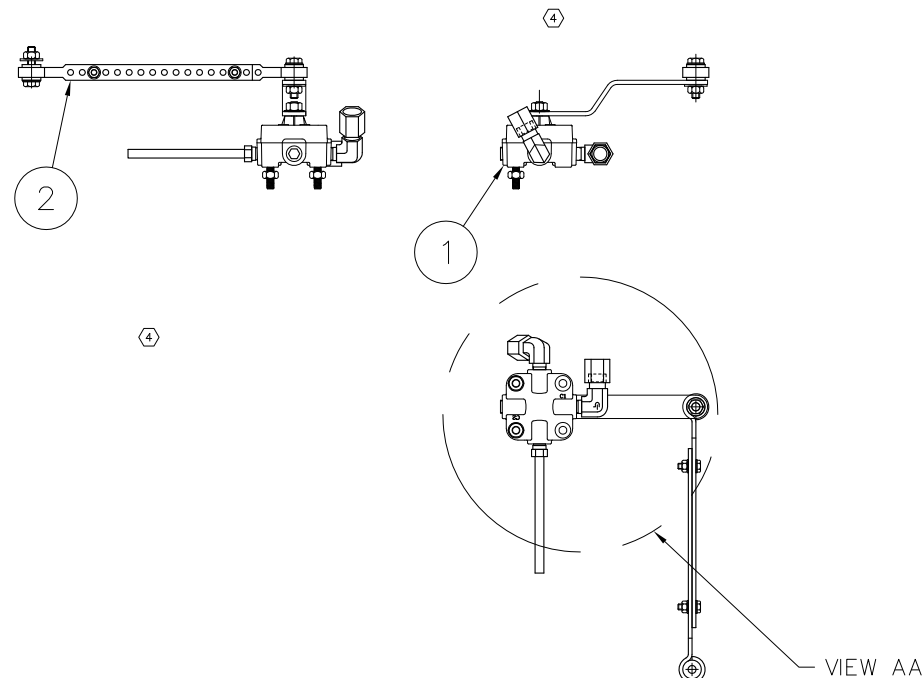


This Print remains the property of Hendrickson. All information contained thereon is confidential. It is loaned, subject to return on demand and on express condition that it is not to be copied or used directly or indirectly for any purpose other than the purpose for which it has been loaned to you.



VIEW AA

SCALE: .50=1.00



HCV WITHOUT DUMP			AKH-179-2
ITEM	PART NO.	DESCRIPTION	QTY.
④ 1	A-28648	HCV - VALVE ONLY	1
2	A-14187	LINK ASSEMBLY - BOLTED	1
*3	L-668	INSTALLATION INSTRUCTIONS	1
*4	DWG C-24788	AKH-179 NON DELAY HCV KIT	1
④ *5	A-29870	HCV SUB-KIT (#1)	1
* NOT SHOWN			WEIGHT (LB) 1.38 ④

NOTES:

1. DO NOT ADD LUBRICATION TO AIR SYSTEM.
2. ALL CONNECTIONS MUST BE LEAK PROOF.
3. AVOID BENDS IN AIR LINES.
4. AIR LINE FITTINGS AND LINES TO BE FURNISHED BY INSTALLER. 3/8" O.D. POLYIMIDE TUBING RECOMMENDED.
- ⑤ 5. TRIM & BOLT LINKS AS REQ'D TO HOLD HEIGHT CONTROL VALVE IN NEUTRAL POSITION WHILE SUSPENSION IS AT RIDE HEIGHT.
6. DO NOT OVER TIGHTEN LINK MOUNTING BOLTS. THE LINK SHOULD PIVOT FREELY ABOUT THE BOLT. THE LINK, WHEN PROPERLY INSTALLED, SHOULD APPEAR VERTICAL WHEN VIEWING IT FROM THE FRONT OF THE SUSPENSION.
7. TO MAKE FINE ADJUSTMENTS IN RIDE HEIGHT LOOSEN THE HCV MOUNTING NUTS AND ROTATE VALVE BODY.
8. ALL ITEMS SHIPPED UNASSEMBLED. FITTINGS, NUTS AND BOLTS TO BE PLACED IN A PLASTIC BAG.
- ⑨ 9. AKH-179 DOES NOT CONTAIN A PRESSURE PROTECTION VALVE. IT IS HENDRICKSON'S RECOMMENDATION THAT A PRESSURE PROTECTION VALVE WITH A CLOSING PRESSURE NO LESS THAN 70 PSI BE USED FOR ANY ACCESSORY INCLUDING A HEIGHT CONTROL VALVE THAT USES BRAKE RESERVOIR AIR.
10. USE AKH-227 HEIGHT CONTROL VALVE KIT ON T MODEL SUSPENSIONS.

OPERATION:

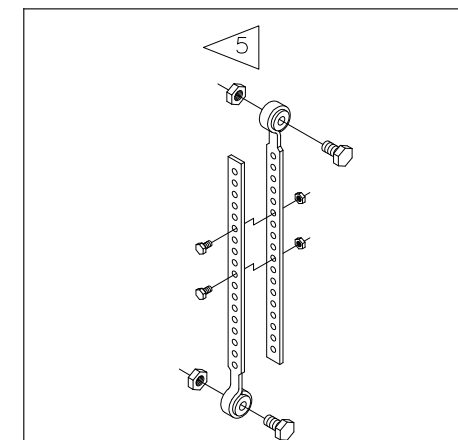
VALVE ARM HORIZONTAL
FRAME IS AT PRESET HEIGHT
NO AIR FLOW OCCURRING.

VALVE ARM DOWN
FRAME IS HIGH, AIR SPRINGS
ARE EXHAUSTED UNTIL ARM
IS HORIZONTAL.

VALVE ARM UP
FRAME IS LOW, AIR SPRINGS
ARE INFLATED UNTIL ARM
IS HORIZONTAL.

FUNCTION:

AUTOMATIC HEIGHT CONTROL.



2070 INDUSTRIAL PLACE S.E. CANTON, OH 44707-2600 U.S.A.

UNLESS OTHERWISE NOTED: TOLERANCES ARE: .X: ± .1 .XX: ± .06 .XXX: ± .030 ANGULAR: ± 0.5°	DIMENSIONS ARE: INCHES 3RD ANGLE PROJECTION	4 16040 PSO 10-12-07	3 15714 CDR 6/15/07	2 8533 LDW 9-17-99	1 8240 LDW 6-23-99	REV. ECN NO. BY DATE	DRAWN BY L. WILSON DATE 1-27-99	CHK'D BY 2-11-99 G. SHENKLE	APP'D BY J. CERVANTEZ	THIS DRAWING IS THE CONFIDENTIAL PROPERTY OF HENDRICKSON
---	---	----------------------	---------------------	--------------------	--------------------	----------------------	---------------------------------	-----------------------------	-----------------------	--

AKH-179
NON DELAY HCV KIT

SCALE .25=1.00 (SIZE)
PAGE 1 OF 1
DRAWING No.

C-24788