

H PARTS LIST

HT™ SERIES
HT250YS / HT250YB / HT250U-Y

LIT NO: L58

DATE: June 2019

REVISION: J



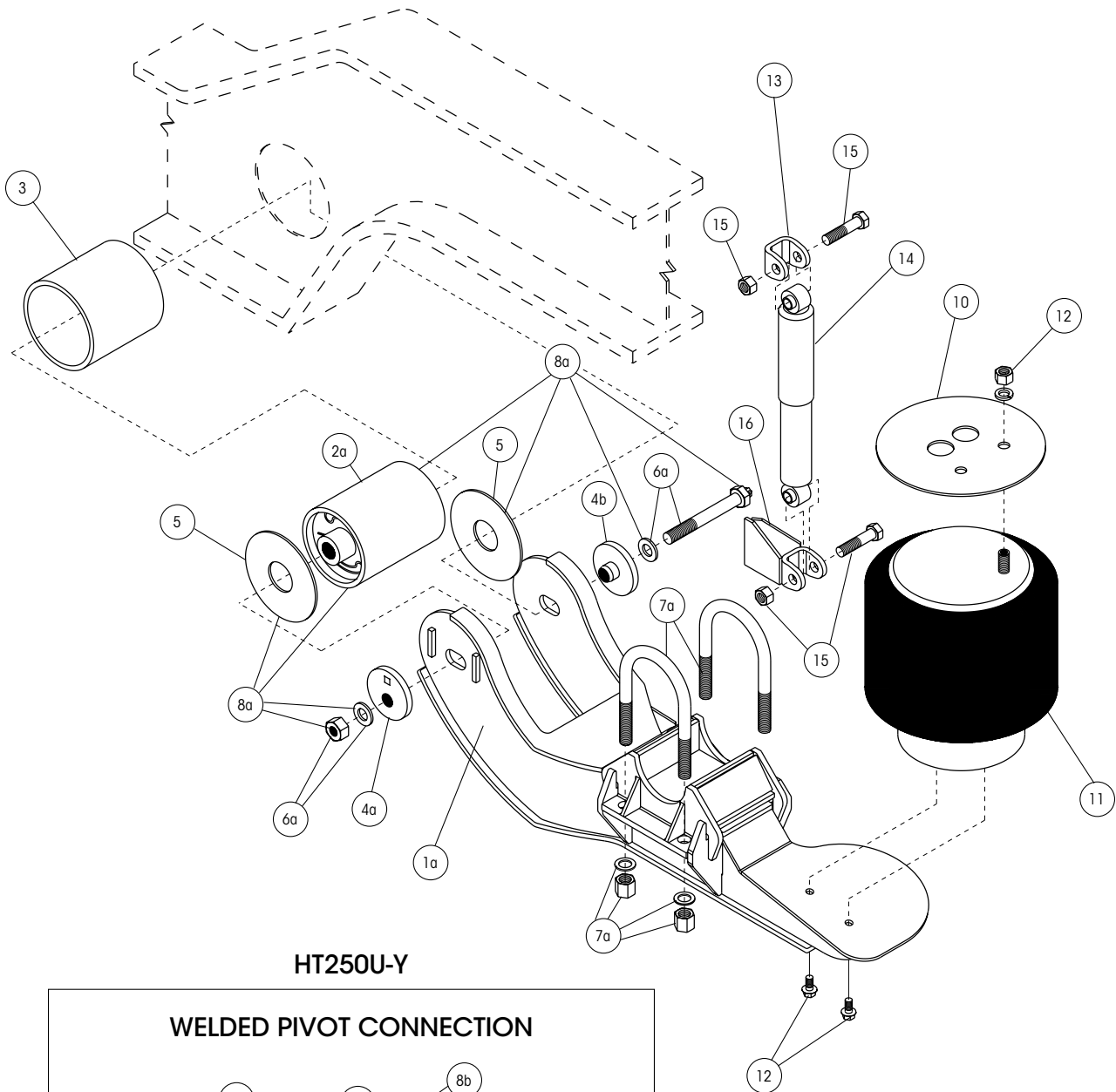
HT250YS



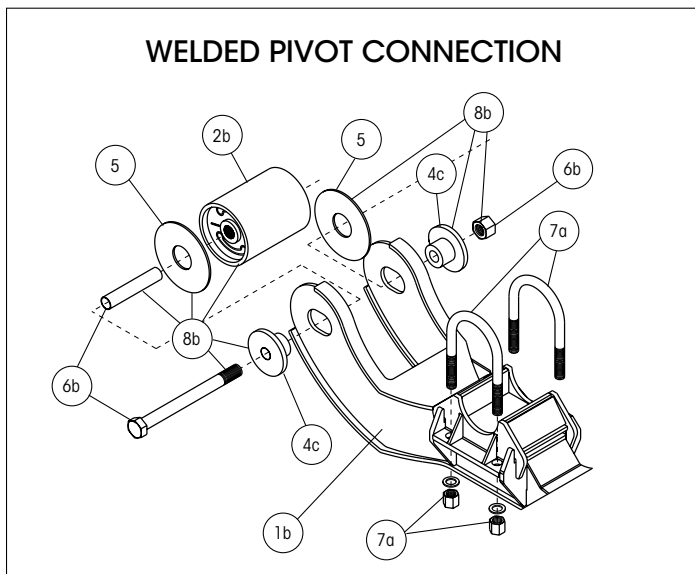
HT250YB

Picture shown may not resemble all models.

HT250U-Y / HT250YB



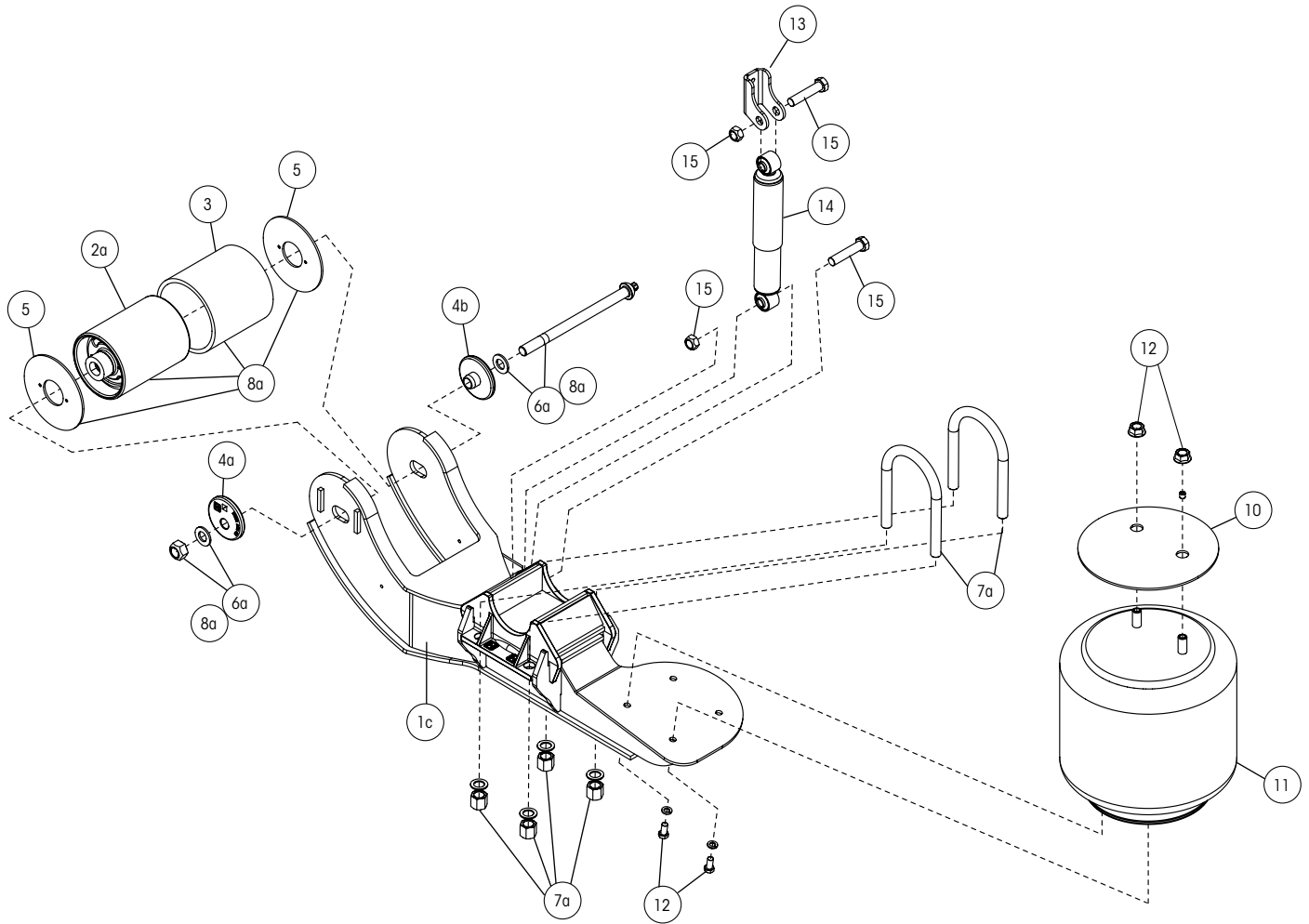
HT250U-Y





Picture shown may not resemble all models.

HT250YS



HT Y-BEAM PARTS LIST



ITEM	DESCRIPTION	PART NO.	QTY. PER SUSP.	Model No. / Description
1	BEAM ASSEMBLY			
1a	Roadside, QUIK-ALIGN®	S-22350-3	1	HT250YB
	Curbside, QUIK-ALIGN	S-22350-4	1	HT250YB
1b	Roadside, welded alignment	S-21076-1	1	HT250U-Y
	Curbside, welded alignment	S-21076-2	1	HT250U-Y
1c	Roadside, QUIK-ALIGN	S-30873-1	1	HT250YS
	Curbside, QUIK-ALIGN	S-30873-2	1	HT250YS
2	BUSHING ASSEMBLY			
2a	Bushing assembly, QUIK-ALIGN	S-30862	2	HT250YB and HT250YS
2b	Bushing assembly, welded alignment	S-7343	2	HT250U-Y
3	TUBE SLEEVE	S-7342	2	All models
4	ALIGNMENT COLLAR			
4a	Eccentric washer, QUIK-ALIGN	S-20925	2	HT250YB and HT250YS; Offset pivot bolt hole
4b	Concentric washer, QUIK-ALIGN	S-20924	2	HT250YB and HT250YS; Centered pivot bolt hole
4c	Welded alignment	S-7349	4	HT250U-Y
5	BUSHING TUBE SPACER	S-21099	4	All models
6	PIVOT BOLT KIT			
6a	QUIK-ALIGN	S-25948	2	HT250YB and HT250YS; Includes shear-type bolt, nut and washer
6b	Welded alignment	S-7345	2	HT250U-Y; Includes bolt, nut and liner
7	U-BOLT KIT	S-3650/4	4	All models
7a	U-Bolt Kit, RD	S-3650/4	4	HT250U-Y and HT250YB
7b	Flattened U-Bolt / Spacer Kit (not shown)	A-22237	1	HT250YS with 12.25" brakes only
7c	U-Bolt Kit (not shown)	S-21140/4	4	HT250YS with 16.5" brakes only
8	TRI-FUNCTIONAL® II BUSHING KIT			
8a	QUIK-ALIGN	S-26000	2	HT250YB and HT250YS; Includes assembly, bushing tube spacers, bolt and nut
8b	Welded Alignment	S-13136	2	HT250U-Y; Includes alignment collars, bushing assembly, bushing tube spacers, bolt, nut and liner
9	BUSHING TUBE SPACER KIT (not shown)	S-26371		HT250U-Y; Includes bolt, nut, liner and bushing tube spacer
10	AIR SPRING PLATE	S-21209	2	All models

Continued on page 5

NOTE: Identification tag can be found on the front of the roadside frame bracket or the inside of the curbside beam.



HT Y-BEAM PARTS LIST

ITEM	DESCRIPTION	PART NO.	QTY. PER SUSP.	Model No. / Description	
11	AIR SPRING	S-20127	2	HT250U -6.5Y -005,006	
				-9Y -006,031,037,706	
				HT250YB -6.5 -006,031,037	
				-7.5 -006,031,037	
				-9.0 -006,031,037	
		HT250YS -006,106			
		Rotated stud	S-20414	2	HT250U -9Y -010
					HT250YB -6.5 -010
					-7.5 -010
					-9.0 -010
HT250YS -010,011					
High pressure, standard	S-20124	2	HT250U -6.5Y -001		
			-9Y -001,021,027		
			HT250YB -6.5 -001,021,027		
			-7.5 -001,021,027		
			-9.0 -001,021,027		
HT250YS -001,101					
12	AIR SPRING BOLT KIT	S-20033/2	2	All models	
13	UPPER SHOCK CLEVIS	Standard	S-2592	2	All models except listed below
					HT250YB -6.5 -021,031
					-7.5 -021,031
					-9.0 -021,031
					HT250YS
14	SHOCK ABSORBER	Standard	S-20002	2	HT250U -6.5Y -001,006
					-7.5Y -001,006
					-9.0Y -001,006,010,021,031,706
					HT250YB -6.5 -001,006,010,021,031
					-7.5 -001,006,010,021,031
		-9.0 -001,006,010,021,031,706			
		Standard	S-23651	2	HT250YS
		Extended service, high damping	S-21553	2	HT250U -9Y -027,037
					HT250YB -6.5 -027,037
					-7.5 -027,037
-9.0 -027,037					
Remote shocks	S-23649	2	HT250YB -7.5-DB2		
			-9-DB2		
15	SHOCK ABSORBER BOLT KIT	S-2157/2	2	HT250U-Y and HT250YB	
		S-31929/2	2	HT250YS	

Continued on page 6

HT Y-BEAM PARTS LIST



ITEM	DESCRIPTION	PART NO.	QTY. PER SUSP.	Model No. / Description
16	LOWER SHOCK CLEVIS			
	Roadside	S-20145-1	1	All HT250U-Y and HT250YS except for remote mt. axle mount
	Curbside	S-20145-2	1	All HT250U-Y and HT250YS except for remote mt. axle mount
	Remote axle mount	S-2723	2	HT250YB -7.5-DB2 -9-DB2
17	SHOCK STRAP KIT (not shown)			Includes strap and nylon tie
	For S-20002 shock absorber	S-14587-1	1	
	For S-21553 shock absorber	S-14587-8	1	
	For S-23651 shock absorber	C-23086-4	1	

*Actual product performance may vary depending upon vehicle configuration, operation, service and other factors.
All applications must comply with applicable Hendrickson specifications and must be approved by the respective vehicle manufacturer with the vehicle in its original, as-built configuration.
Contact Hendrickson for additional details regarding specifications, applications, capacities, and operation, service and maintenance instructions.*

Call Hendrickson at 330.489.0045 or 866.RIDEAIR (743.3247) for additional information.



www.hendrickson-intl.com

TRAILER COMMERCIAL VEHICLE SYSTEMS

2070 Industrial Place SE
Canton, OH 44707-2641 USA
866.RIDEAIR (743.3247)
330.489.0045 • Fax 800.696.4416

Hendrickson Canada

250 Chrysler Drive, Unit #3
Brampton, ON Canada L6S 6B6
800.668.5360
905.789.1030 • Fax 905.789.1033

Hendrickson Mexicana

Circuito El Marqués Sur #29
Parque Industrial El Marqués
Pob. El Colorado, Municipio El Marqués,
Querétaro, México C.P. 76246
+52 (442) 296.3600 • Fax +52 (442) 296.3601

L58 Rev J 06-19

© 2000 – 2019 Hendrickson USA, L.L.C. All Rights Reserved. All trademarks shown are owned by Hendrickson USA, L.L.C., or one of its affiliates, in one or more countries.
Information contained in this literature was accurate at the time of publication. Product changes may have been made after the copyright date that are not reflected.

Printed in United States of America