

# **H** PARTS LIST

## HT250US UNDERSLUNG

LIT NO: L582

DATE: May 2019

REVISION: G

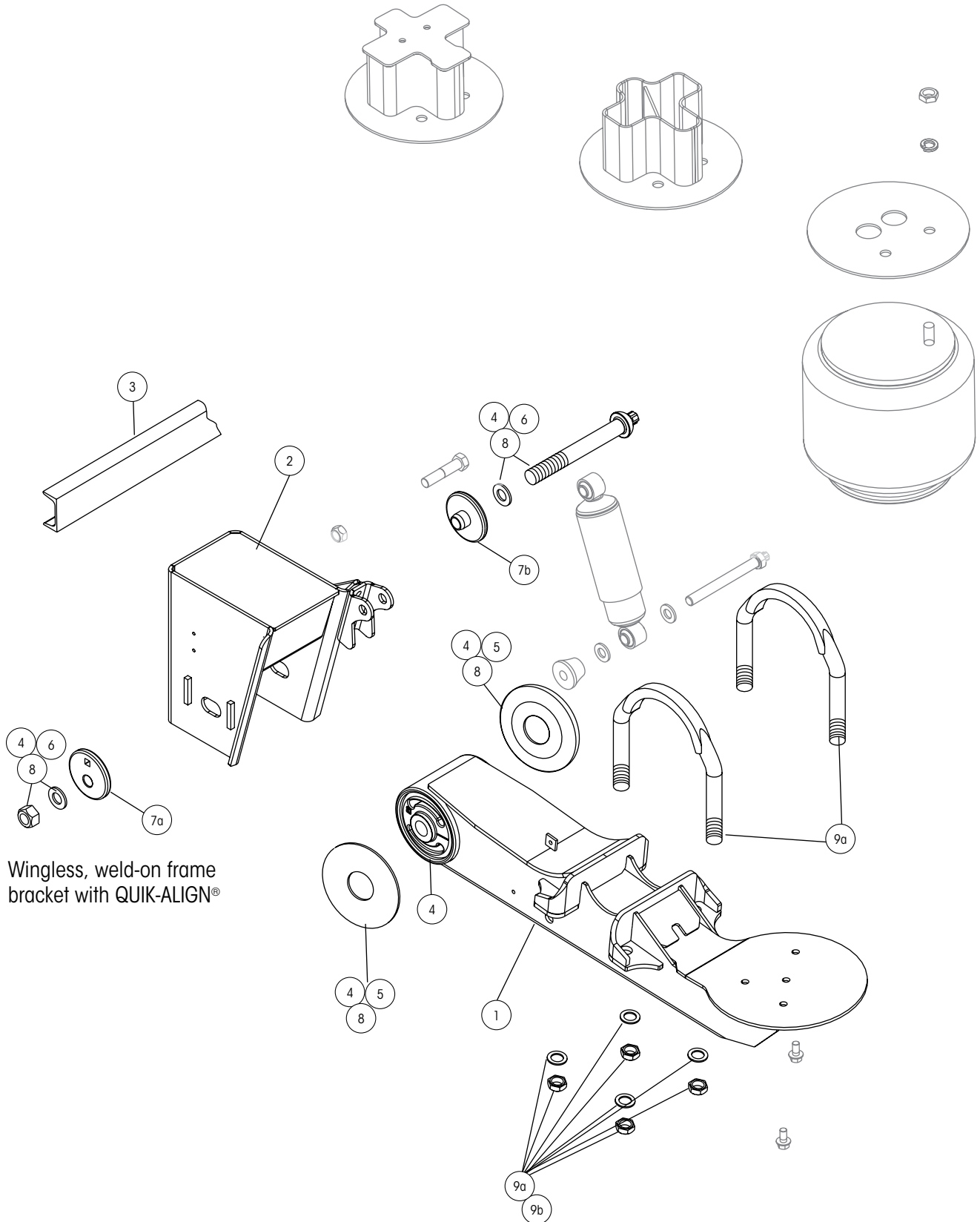
---



# HT250US UNDERSLUNG PARTS LIST



Picture shown may not resemble all models.



Wingless, weld-on frame bracket with QUIK-ALIGN®



# HT250US UNDERSLUNG PARTS LIST

ITEM	DESCRIPTION	PART NO.	QTY. PER SUSP.	NOTE
<b>1</b>	<b>BEAM ASSEMBLY</b>			
	<b>Standard</b>			
	Roadside	S-24186-1	1	All models except steer axles
	Curbside	S-24186-2	1	All models except steer axles
	<b>Steer (Not Shown)</b>			
	Roadside	S-29303-1	1	Steer axles only
	Curbside	S-29303-1	1	Steer axles only
<b>2</b>	<b>FRAME BRACKET<sup>1</sup></b>			See L1266 Frame Bracket Parts List
<b>3</b>	<b>FRAME BRACKET C-CHANNEL</b>	A-1631-19	1	All models
<b>4</b>	<b>TRI-FUNCTIONAL® II BUSHING KIT<sup>2</sup></b>	S-24691	2	Includes bushing, bushing tube spacers, round head bolt, prevailing torque hex nut, hardened washers and lube
<b>5</b>	<b>BUSHING TUBE SPACER</b>	S-21099	4	All models
<b>6</b>	<b>QUIK-ALIGN® PIVOT BOLT KIT</b>	S-24679	2	Includes round head bolt, hardened washers and prevailing torque hex nut
<b>7</b>	<b>ALIGNMENT COLLARS</b>			
	<b>7a</b> Eccentric	S-20925	2	Alignment hole is off center
	<b>7b</b> Concentric	S-20924	2	Alignment hole is centered
<b>8</b>	<b>BUSHING TUBE SPACER KIT</b>	S-26369	2	Includes round head bolt, hardened washers, prevailing torque hex nut and bushing tube spacers
<b>9</b>	<b>U-BOLT KIT</b>			
	<b>9a</b> 19.5" or Larger Tires	S-21140/4	4	Includes (1) stepped U-bolt and hardware; axle spacer is not needed
	<b>9b</b> 17.5" Tires	S-22894/4	4	Includes (1) flattened U-bolt and hardware; axle spacer is needed with flattened U-bolt
<b>10</b>	<b>AXLE SPACER</b>	S-20701	4	Axle spacer is not needed with stepped U-Bolt. For use with flattened U-bolt only. Must order with 9b.

1. Other options exist. Contact Hendrickson for assistance.

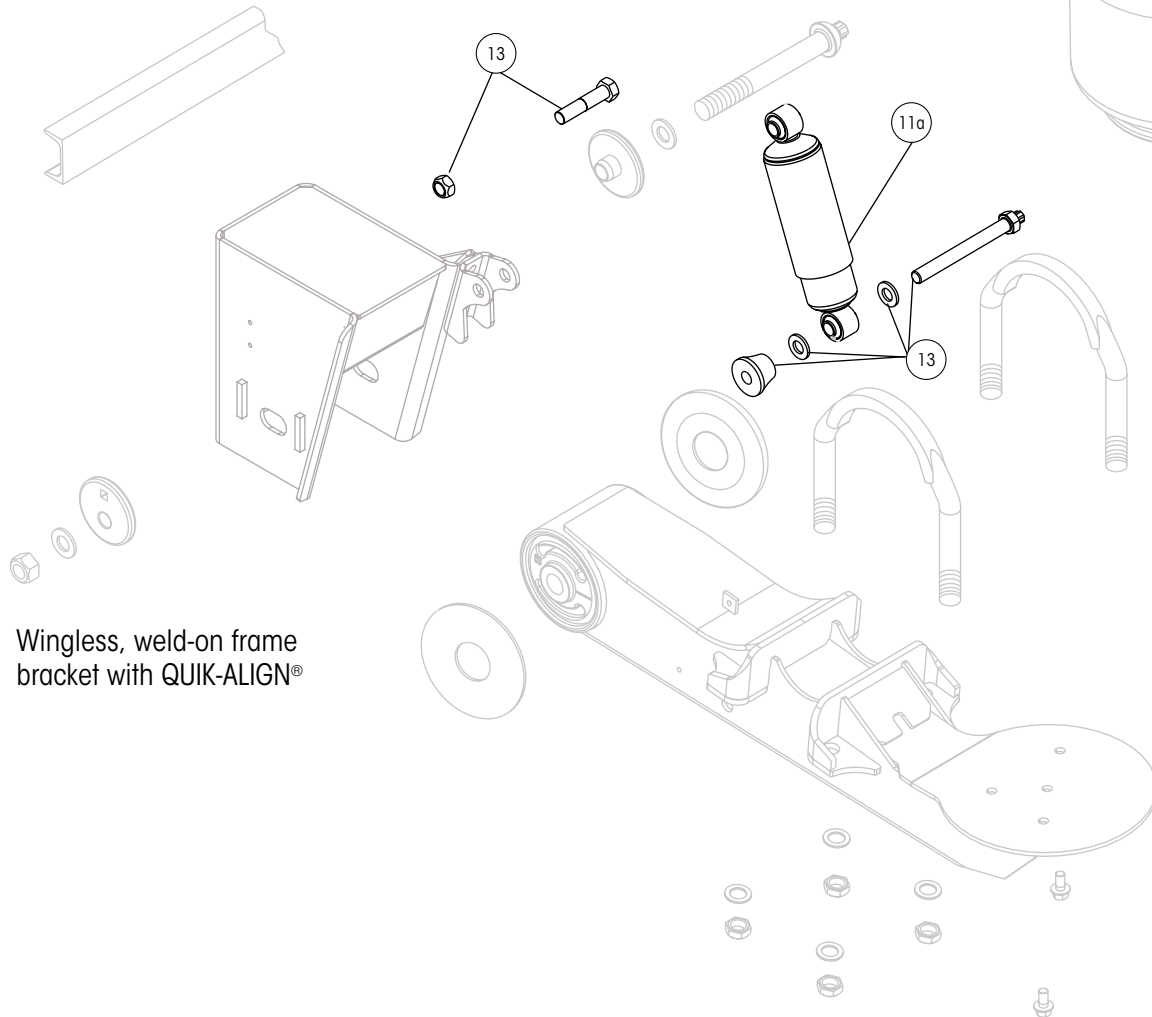
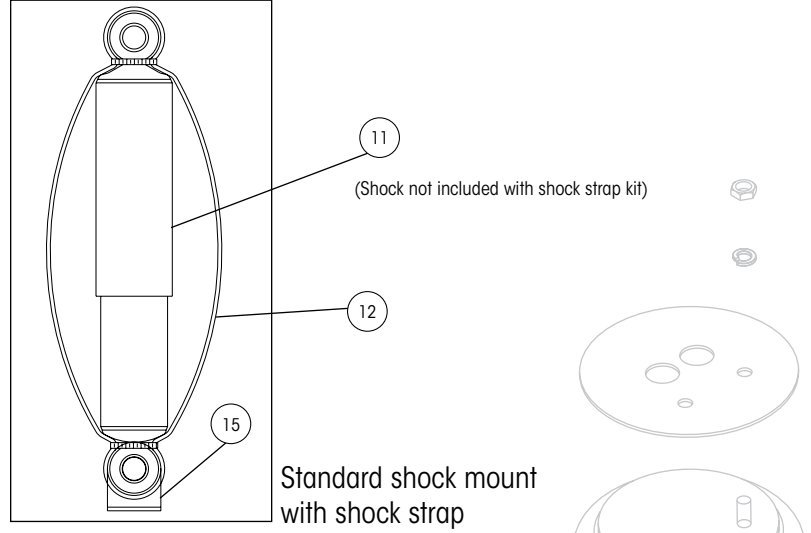
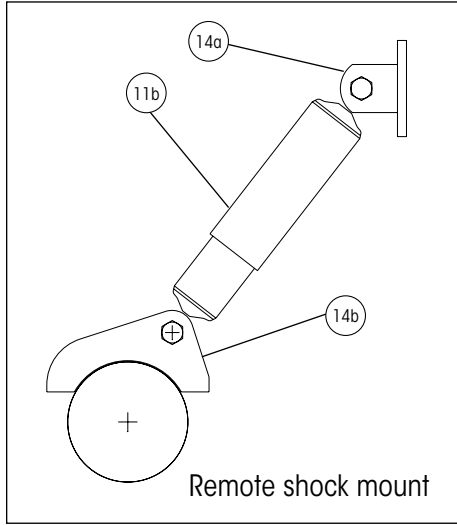
2. Bushing tool S-21307 is required to correctly re-bush the suspension.

NOTE: Identification tag can be found on the front of the roadside frame bracket or the inside of the curbside beam.

# HT250US UNDERSLUNG PARTS LIST



Picture shown may not resemble all models.



Wingless, weld-on frame bracket with QUIK-ALIGN®



# HT250US UNDERSLUNG PARTS LIST

11 & 12 SHOCK ABSORBERS AND SHOCK STRAP KITS				
DESCRIPTION	SHOCK PART NO. (11)	QTY PER SUSP.	SHOCK STRAP KIT NO. (12) <sup>3</sup>	QTY PER SUSP.
<b>a Standard Shock Mount</b>				
<b>Standard Travel</b>				
3.5" to 4" RH	S-23548	2	C-23086-11	1
5.5" to 6.5" RH	S-23650	2	C-23086-3	1
7.5" to 14" RH	S-23649	2	C-23086-5	1
<b>Standard Travel - High Damping</b>				
5.5" to 6.5" RH	S-23744	2	C-23086-10	1
7.5" to 14" RH	S-23743	2	C-23086-5	1
<b>Limited Jounce</b>				
6.5" to 12" RH	S-23649	2	C-23086-5	1
<b>Limited Jounce - High Damping</b>				
6.5" to 12" RH	S-23743	2	C-23086-5	1
<b>Extended Rebound</b>				
6.5" RH	S-23651	2	C-23086-4	1
<b>Extended Rebound - High Damping</b>				
6.5" RH	S-24579	2	C-23086-8	1
<b>b Remote Shock Mount <sup>4</sup></b>				
<b>Standard Travel</b>				
5.5" to 6.5" RH	S-23650	2	S-14587-9	1
7.5" to 9" RH	S-23649	2	S-14587-10	1
12" to 14" RH	S-2212	2	S-14587-3	1
<b>Standard Travel - High Damping</b>				
5.5" to 6.5" RH	S-23744	2	S-14587-11	1
7.5" to 9" RH	S-23743	2	S-14587-10	1
<b>Extended Rebound</b>				
6.5" to 9" RH	S-2212	2	S-14587-3	1
<b>Extended Rebound - High Damping</b>				
6.5" to 9" RH	S-23316	2	S-14587-3	1
<b>c Angled and Frame Clearance Mounting (Not Shown)</b>				
<b>Standard Travel</b>				
6.5", 7.5" and 14" RH	S-23651	2	N/A	1
<b>Standard Travel - High Damping</b>				
6.5", 7.5" and 14" RH	S-24579	2	N/A	1

ITEM	DESCRIPTION	PART NO.	QTY. PER SUSP.	NOTE
<b>13</b>	<b>SHOCK BOLT KIT</b>			(1) Shock bolt is required per shock
	Standard Shock Mount	S-24185/2	2	
	Standard Shock Mount Lower	S-23642	2	
	Standard Shock Mount Upper	S-2157/2	1	
	Remote Shock Mount	S-2157/2	2	
<b>14</b>	<b>REMOTE SHOCK MOUNT</b>			Also order shock bolt kit S-2157/2
	Upper Assembly	A-5431	2	
	Lower Assembly	S-2723	2	
<b>15</b>	<b>SHOCK STRAP CLEVIS</b>	B-20919	2	Only needed for standard shock mount Included in shock strap kit

3. Shock strap kits: includes (2) straps, (2) clevis and (4) nylon ties

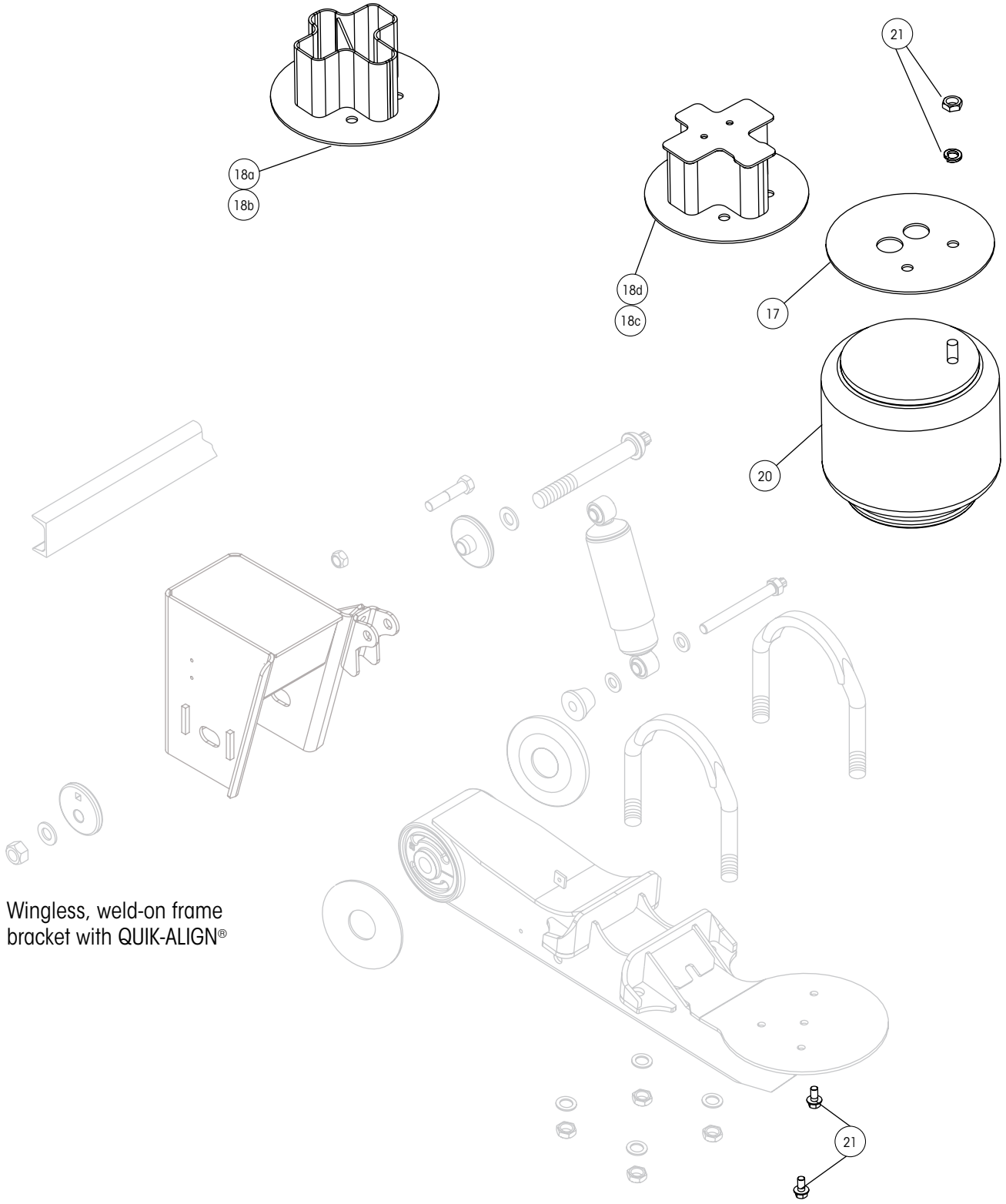
4. Shock strap clevis not included and not needed for remote shock mount

NOTE: Identification tag can be found on the front of the roadside frame bracket or the inside of the curbside beam.

# HT250US UNDERSLUNG PARTS LIST



Picture shown may not resemble all models.



Wingless, weld-on frame bracket with QUIK-ALIGN®



# HT250US UNDERSLUNG PARTS LIST

ITEM	DESCRIPTION	PART NO.	QTY. PER SUSP.	NOTE
16	UPPER SHOCK CLEVIS (Not Shown)	S-2592	2	3.5" and 4" RH only
17	AIR SPRING MOUNTING PLATE			Air spring mounting plates fit standard and rotated mounting types
	<b>Weld-on, Angled and Frame Clearance</b>			
	3.5" to 14" RH	S-21209	2	
	<b>Bolt-on</b>			
	5.5" to 9" RH, Standard Travel	B-21211	2	
18	AIR SPRING SPACER ASSEMBLY <sup>5</sup>			Air spring spacers fit standard and rotated air spring mounting types. Includes air spring plate and spacer assembly.
	<b>18a Weld-on, Standard Travel</b>			
	12" RH	C-21210-3	2	With 3" spacer with top plate
	14" RH	C-21210-5	2	With 5" spacer with top plate
	<b>18b Weld-on, Limited Jounce</b>			
	6.5" and 7.5" RH	C-21210-1	2	With 1" spacer with top plate
	9" RH	C-21210-3	2	With 3" spacer with top plate
	12" RH	C-21210-5	2	With 5" spacer with top plate. Also on frame angled and frame clearance 14" RH
	<b>18c Bolt-on, Standard Travel</b>			
	12" RH	C-21215-3	2	With 3.2" spacer with top plate
	14" RH	C-21215-5	2	With 5.2" spacer with top plate
	<b>18d Bolt-on, Limited Jounce</b>			
	6.5" and 7.5" RH	C-21215-1	2	With 1.2" spacer with top plate
	9" RH	C-21215-3	2	With 3.2" spacer with top plate
	12" RH	C-21215-5	2	With 5.2" spacer with top plate
19	AIR SPRING SPACER <sup>6</sup> (Not Shown)	B-28662	2	For steer axle configurations only
20	AIR SPRING			
	<b>Standard Mount</b>			
	4" RH	S-20010	2	
	3.5" and 4" RH, High Pressure	S-20223	2	
	5.5" to 14" RH	S-20127	2	
	6.5" RH, High Pressure, Short Bellows	S-20716	2	
	7.5" to 14" RH, High Pressure	S-20124	2	
	<b>Rotated Mount</b>			
	5.5" to 14" RH	S-20414	2	
	7.5" to 14" RH, High Pressure	S-20413	2	
21	AIR SPRING MOUNTING KIT	S-20033/2		Order 1 kit per air spring

5. Other options exist. Contact your customer service representative for specific model numbers.

6. Used on all steerable configurations except when paired with bolt-on air spring mounting plate and space assembly.

NOTE: Identification tag can be found on the front of the roadside frame bracket or the inside of the curbside beam.

*Actual product performance may vary depending upon vehicle configuration, operation, service and other factors.  
All applications must comply with applicable Hendrickson specifications and must be approved by the respective vehicle manufacturer with the vehicle in its original, as-built configuration.  
Contact Hendrickson for additional details regarding specifications, applications, capacities, and operation, service and maintenance instructions.*

**Call Hendrickson at 330.489.0045 or 866.RIDEAIR (743.3247) for additional information.**



[www.hendrickson-intl.com](http://www.hendrickson-intl.com)

**TRAILER COMMERCIAL VEHICLE SYSTEMS**

2070 Industrial Place SE  
Canton, OH 44707-2641 USA  
866.RIDEAIR (743.3247)  
330.489.0045 • Fax 800.696.4416

**Hendrickson Canada**

250 Chrysler Drive, Unit #3  
Brampton, ON Canada L6S 6B6  
800.668.5360  
905.789.1030 • Fax 905.789.1033

**Hendrickson Mexicana**

Circuito El Marqués Sur #29  
Parque Industrial El Marqués  
Pob. El Colorado, Municipio El Marqués,  
Querétaro, México C.P. 76246  
+52 (442) 296.3600 • Fax +52 (442) 296.3601

L582 Rev G 05-19

© 1997 – 2019 Hendrickson USA, L.L.C. All Rights Reserved. All trademarks shown are owned by Hendrickson USA, L.L.C., or one of its affiliates, in one or more countries.  
Information contained in this literature was accurate at the time of publication. Product changes may have been made after the copyright date that are not reflected.

Printed in United States of America