

ASSEMBLY INSTRUCTIONS

Transverse Rods

SUBJECT: Requirements and Installation
Guidelines

LIT NO: 59310-004

DATE: December 2006

REVISION: C

REQUIREMENTS

TRANSVERSE RODS ARE MANDATORY FOR THE FOLLOWING HENDRICKSON REAR SUSPENSIONS:

- All walking beam series suspensions up to and including 52,000 lbs. capacity with axle spacing 60 inches or greater.
- All walking beam series suspensions up to and including 52,000 lbs. capacity when used on front-end loader refuse packers.
- All walking beam series suspensions up to and including 52,000 lbs. capacity when used in mining applications.
- All HN[®], HAULMAAX[®], HA[™], HAS[™] and PRIMAAX[®] series suspensions.
- All walking beam series suspensions with capacities of 44,000 lbs. through 52,000 lbs. when using rubber equalizing beam center bushings, regardless of axle spacing.

TRANSVERSE RODS are also recommended where it is necessary to restrict the lateral movement of axles to prevent interference of tires, brakes, axle housings, etc. with the frame, body or suspension components. This must be determined by the vehicle manufacturer prior to vehicle assembly.

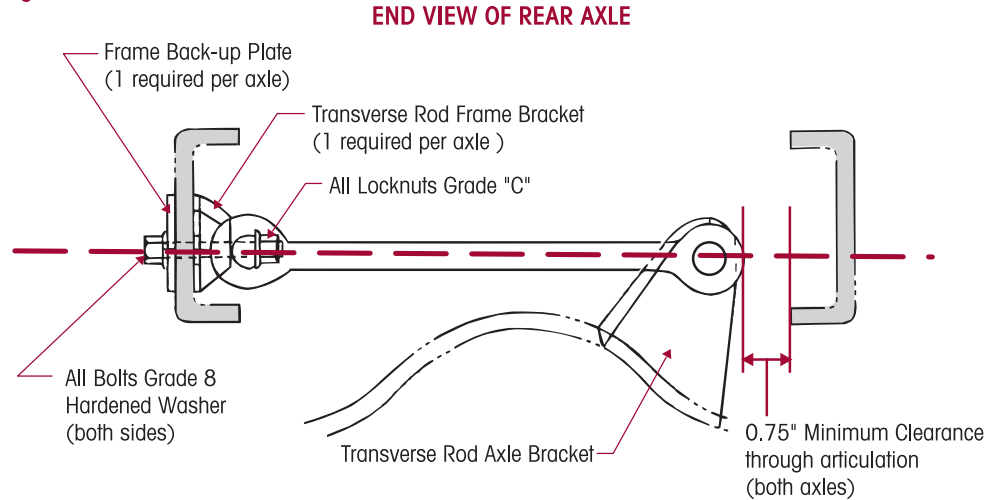


CAUTION

WHEN TRANSVERSE RODS ARE USED ON WALKING BEAM SERIES SUSPENSIONS, THE EQUALIZING BEAM CENTER BUSHING MUST BE RUBBER. EQUALIZING BEAMS THAT CONTAIN A BRONZE CENTER BUSHING MUST BE CONVERTED TO A RUBBER CENTER BUSHING PRIOR TO INSTALLING TRANSVERSE RODS. FAILURE TO DO SO CAN CAUSE PREMATURE COMPONENT WEAR.

RECOMMENDED GUIDELINES FOR INSTALLING TRANSVERSE RODS

Figure 1



WARNING

DO NOT MODIFY OR REWORK PARTS. DO NOT SUBSTITUTE PARTS OF THE SUSPENSION OR AXLE COMPONENTS, USE OF A MODIFIED OR REPLACEMENT PARTS NOT AUTHORIZED BY HENDRICKSON MAY NOT MEET HENDRICKSON'S SPECIFICATIONS, AND CAN RESULT IN FAILURE OF THE PART, LOSS OF VEHICLE CONTROL, AND POSSIBLE PERSONAL INJURY OR PROPERTY DAMAGE. USE ONLY HENDRICKSON AUTHORIZED REPLACEMENT PARTS, DO NOT MODIFY PARTS WITHOUT AUTHORIZATION FROM HENDRICKSON.



CAUTION

A MECHANIC USING A SERVICE PROCEDURE OR TOOL WHICH HAS NOT BEEN RECOMMENDED BY HENDRICKSON MUST FIRST SATISFY HIMSELF THAT NEITHER HIS SAFETY NOR THE VEHICLE'S SAFETY WILL BE JEOPARDIZED BY THE METHOD OR TOOL SELECTED. INDIVIDUALS DEVIATING IN ANY MANNER FROM THE INSTRUCTIONS PROVIDED ASSUME ALL RISKS OF ANY POSSIBLE PERSONAL INJURY OR DAMAGE TO EQUIPMENT INVOLVED.

- If possible, install transverse rods while the vehicle is set at its loaded ride height.
- Install transverse rods perpendicular to the frame rails, see Figure 2.
- The transverse rod frame brackets are to be mounted on the web section and located as close as possible to either the bottom (preferably) or top flange of the frame.
- Frame backup plates must be installed with transverse rod frame brackets without exception.
- Transverse rods are to be installed as low as possible to the horizontal centerline of the axle, but high enough as not to interfere with axle components during articulation.

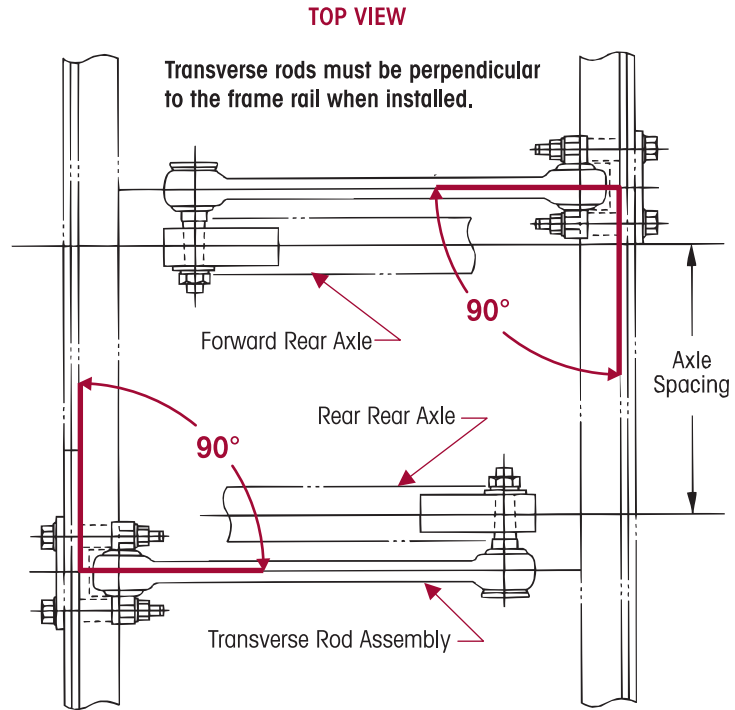
NOTE

A vehicle equipped with transverse rods may experience some reduction in suspension articulation or increased lateral stiffness and resistance to turning, especially with radial ply tires.

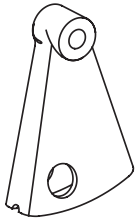
NOTE

Hendrickson Truck Suspension Systems engineering does not set the guidelines with regard to transverse rod axle bracket heights or footprints, this is due to the many variables of axle combinations, frame widths, and suspension ride heights.

Figure 2



TRANSVERSE ROD AXLE BRACKETS

	Bracket Part Number	Axle
	48042	D460, D480
	46868	SL100, SQ100, SQHP
	34926	SSHD
	46732	SR170

Please refer any questions regarding this publication to Hendrickson Tech Services at 630.910.2800 or e-mail techservices@hendrickson-intl.com. See our website at www.hendrickson-intl.com for more information on Hendrickson products and to obtain a copy of the applicable Hendrickson technical publication(s) with safety and work instructions for your particular suspension.

www.hendrickson-intl.com



Truck Suspension Systems
800 South Frontage Road
Woodridge, IL 60517-4904 USA

630.910.2800
Fax 630.910.2899