

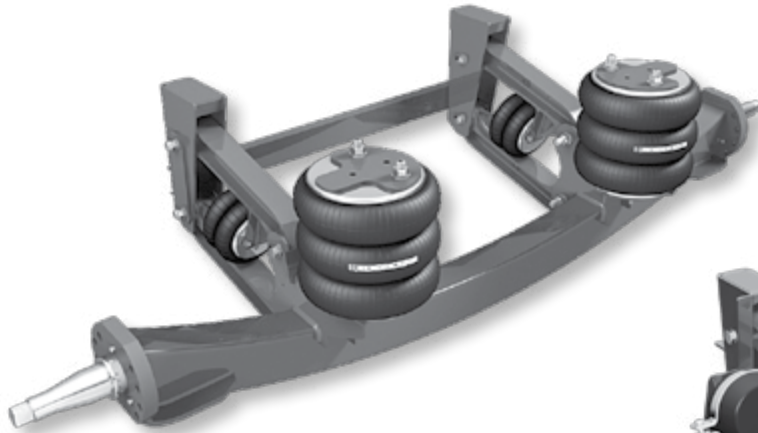
TRAILER LIFT AXLE

Specification Guide

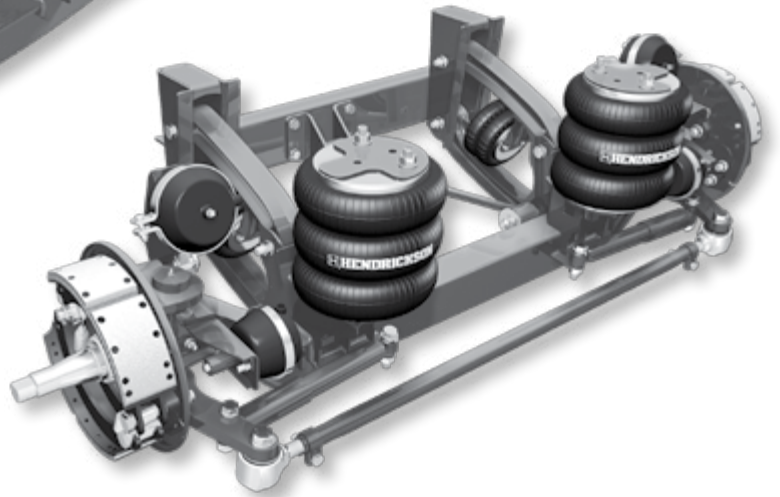
LIT NO: H764

DATE: April 2017

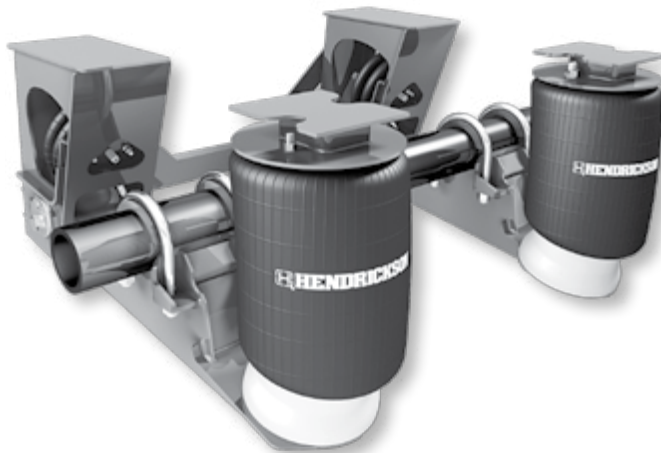
REVISION: B



COMPOSILITE®



TOUHLIFT®



TRAILER LIFT AXLE SPECIFICATION GUIDE

Call Hendrickson at:

1.800.660.2829 or 1.800.668.5360 in Canada
for additional information and application specifications.

 **LiftAxleTech@hendrickson-intl.com**

 **1.740.929.5601**

SPECIFICATION REQUESTER — REQUIRED INFORMATION

Company Name:	Request Date:
Contact Person:	City, State, Zip:
Telephone:	E-mail Address:

Please complete the sections below in numerical order.

1 APPLICATION & CAPACITY SELECTION

COMPOSILITE® Family <i>Lighter Duty Applications – Use fabricated axles</i>		TOUGHLIFT® Family <i>Heavy Duty Applications – Use trailer style, round tube axles</i>	
Steerable / Single Tire Capacities		Non-Steerable / Single Tire Capacities	
13K		13K	
20K		20K	
Non-Steerable / Single Tire Capacities		22K*	
13K		25K	
		Steerable / Dual Tire Capacities	
		25K	
		Non-Steerable / Dual Tire Capacities	
		20K	
		22K*	

* Tag application (straight axle) only

2 VEHICLE APPLICATION VERIFICATION (ALL DIMENSIONS REQUIRED)

On-Frame Mounting Location:
 Pusher (Ahead of Tandem) Tag (Behind Tandem)

Installation Application? Bolt-on Weld-on

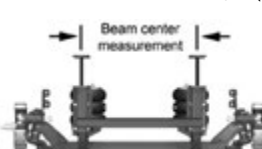
Vehicle's Primary Suspension Type:
 Air Ride Chalmers Rubber Block Mechanical Spring

Bottom of Frame Rail to ground Dimension (at axle mounting location): **Unloaded** _____ **Loaded** _____

Trailer Frame Width (outside to outside): _____

Frame Rail Height: _____

Width of Frame Flange (underside of frame): _____



OR Trailer Frame Beam Centers
(center to center of I-beam frame, see illustration): _____

Preferred Tire Size to be Mounted on Lift Axle: _____

3 WHEEL END EQUIPMENT OPTIONS (SELECT ALL THAT APPLY)

NOTE: Not all options available on all models; all units come standard filled with 80W/90 oil, except grease-filled hub caps.

- Hub Piloted Grease-filled Hub Caps
- Dust Shields Disc Brakes (13K - 20K Applications Only)
- ABS Ready No Wheel Ends (Brakes Only)

4 ADDITIONAL SUSPENSION OPTIONS

NOTE: Not all options available on all models

- V-Rod System Lock Straight (Steer only)
- TIREMAAX® Pre-Plumbed (Air control kit sold separately)
- Alaskan Special Softcoat Axle Body
- Galvanization

5 TIE ROD STYLE

- Heavy Duty CTR (Standard) Traditional Grease Tie Rod

6 AIR CONTROL KIT SPECIFICATIONS

NOTE: Control Kits sold separately; all units equipped for steerable use, have standard lift in reverse included

Select Control Mounting Style (choose one):

- Inside Cab Outside on Frame
- No Control Requested Maryland Spec

If Outside on Frame Selected (choose one):

- Steel Box Composite Box

If Lock Straight Option Selected (choose one):

- Lift and Lock Straight in Reverse Down and Lock in Reverse

Call Hendrickson at 800.660.2829 or 800.668.5360 in Canada for additional information.