

# **APPLICATION GUIDE**

## **HENDRICKSON AIR DISC BRAKES**

LIT NO: L1225

DATE: August 2017

REVISION: F



### **TABLE OF CONTENTS**

Introduction.....	2	Height Control Valve Requirements.....	6
Purpose .....	2	TRLAXLE® Non-Integrated Axle Brake Caliper Position ...	7
Important Notice.....	2	Wheel and Valve Stem .....	7
Questions.....	2	Trailer Brake Air Line Routing .....	7
Changes to Guidelines.....	2	Air Disc Brake Wheel-End System Options.....	8
Air Disc Brake Option .....	3	Hendrickson ADB Options Matrix.....	8
Brake Ratings .....	3	Air Disc Brake Warranty .....	9
Air Disc Brake Ordering Guide / Application Release Form.....	3	Air Disc Brake Package Weights Compared to Drum Brakes.....	10
Suspension and Axle Availability .....	4	Air Disc Brake vs. Drum Brake Weight Comparison ....	10
Suspension and Axle Specification Requirements.....	5	Closing .....	10
Additional Component Requirements .....	5		



## INTRODUCTION

Hendrickson presents this publication to aid in understanding Hendrickson's Air Disc Brake (ADB) product offering and application requirements. Hendrickson offers ADB packages for several wheel-end systems to meet virtually any application or technology requirement.

## PURPOSE

The purpose of this document is to provide original equipment manufacturers (OEMs) of medium and heavy-duty vehicles with application guidelines for Hendrickson Air Disc Brakes.

The descriptions and specifications contained in this publication are current at the time of printing.

Hendrickson reserves the right to discontinue or modify its models and / or procedures and to change specifications at any time without notice.

Any references to brand names in this publication are made as an example of the types of tools and materials recommended for use and should not be considered an endorsement. Equivalents may be used.

## IMPORTANT NOTICE

Hazard signal words (such as Warning or Caution) appear in various locations throughout this publication. Information accented by one of these signal words must be observed at all times.

Additional notes are utilized to emphasize areas of procedural importance and provide suggestions for ease of repair. The following definitions indicate the use of these signal words as they appear throughout the publication.

**⚠ WARNING: INDICATES HAZARDS OR UNSAFE PRACTICES WHICH COULD RESULT IN SEVERE PERSONAL INJURY OR DEATH.**

**⚠ CAUTION: Indicates hazards or unsafe practices which could result in damage to equipment or minor personal injury.**

**☑ NOTE:** Additional service information not covered in the service procedures.

## QUESTIONS

For answers to questions concerning these guidelines, for information not covered in these guidelines or to request a Hendrickson Trailer Ordering Guide, contact:

Hendrickson Trailer Commercial Vehicle Systems  
2070 Industrial Place SE  
Canton, OH 44707-2641  
Telephone: 866-743-3247 (866-RIDE-AIR)  
Website: [www.hendrickson-intl.com](http://www.hendrickson-intl.com)

## CHANGES TO GUIDELINES

These guidelines are subject to change at any time without prior notice at the discretion of Hendrickson. To get the most up-to-date version of these guidelines visit [www.hendrickson-intl.com](http://www.hendrickson-intl.com).



## AIR DISC BRAKE OPTION

Hendrickson offers the following ADB systems for 19.5", 22.5" and 24.5" wheels:

1. Hendrickson MAXX22T™

This system uses a 415mm diameter rotor that is compatible with 22.5" or 24.5" wheels.

2. WABCO PAN22-1

This system uses a 430mm diameter rotor that is compatible with 22.5" or 24.5" wheels and will fit dual or wide base tires.

3. Knorr/Bendix ADB22X

This system uses a 430mm diameter rotor that is compatible with 22.5" or 24.5" wheels and will fit dual or wide base tires. Knorr/Bendix ADB22X is not approved for dolly applications.

4. WABCO PAN19

This system uses a 375mm diameter rotor that is compatible with 19.5" wheels and will fit dual or wide base tires.

**NOTE:** Hendrickson previously offered the Haldex DB22LT, but a U.S. court ruled in January 2011 that the Haldex DB22LT ADB must be discontinued in the USA. While this system is no longer available on new production units, Hendrickson can fulfill aftermarket service requests for Haldex DB22LT systems. Please contact your customer service representative for aftermarket replacement components.

## BRAKE RATINGS

Hendrickson MAXX22T, WABCO PAN22-1, Knorr/Bendix ADB22X and WABCO PAN19 each use a specific brake pad lining and brake chamber tuned for each respective ADB package to achieve the desired brake rating.

For a complete list of all ADB brake rating certifications for FMVSS-121 (USA), CMVSS-121 (Canada) and ECE R13 (Europe), please reference Hendrickson literature number *L809 – Consolidated Certificate of Compliance for Air Actuated Brakes*. This document is available on Hendrickson's website at [www.hendrickson-intl.com](http://www.hendrickson-intl.com).

## AIR DISC BRAKE ORDERING GUIDE / APPLICATION RELEASE FORM

To order ADB packages from Hendrickson, customers are required to complete and submit an ordering guide. In some cases, an application approval is also required using one of the ADB approval methods (listed below):

- A. Pre-Approval (per disc brake manufacturer requirements)
- B. Online Approval
- C. Waiver (found on the last page of the product ordering guide)
- D. Application form (found on the last page of the product ordering guide)

This application approval is required by our ADB suppliers who use this information to fully understand the trailer application as well as the brake balancing characteristics between the tractor and trailer.

**NOTE:** The application approval is not required for the Hendrickson MAXX22T system. The MAXX22T is approved for use in on-highway applications using the approved brake ratings.



**SUSPENSION AND AXLE AVAILABILITY**

The table below provides a summary of the suspension systems and axle models available with air disc brakes.

**NOTE:** Hendrickson MAXX22T™, WABCO PAN22-1 or WABCO PAN19 must be specified for all dolly applications. Bendix does not approve the use of the ADB22X in dolly trailer applications.

<b>HENDRICKSON SUSPENSIONS AND AXLES AVAILABLE WITH ADB</b>	
<b>SUSPENSION / AXLE MODELS</b>	<b>AVAILABILITY</b>
<b>INTRAAX®</b>	
AANT 23K	Requires unique HCV
AANLS 20K / AANL 23K	Requires rear mounted shocks and unique HCV
AAT 23K, 25K, 30K	ADB OK without SURELOK® — requires unique HCV
AAL 23K, 25K, 30K	Requires rear mounted shocks
AAEDL 30K* / AAEDT 30K*	Requires rear mounted shocks
<b>INTRAAX®-SP</b>	
AAZNT 23K, 46K	Requires unique HCV
AAZNT 69K	ADB OK
AAZL 23K, 46K	Not available
<b>ULTRAA-K®</b>	
ULTRAA-K® UTKNT 40K**	ADB OK
<b>VANTRAAX®</b>	
HKANT 23K, 40K, 46K**	Requires unique HCV
HKANT 69K23**	ADB OK
HKAT 50K**	ADB OK without SURELOK — requires unique HCV
HKAT 69K25, HKARL**	ADB OK without SURELOK
HKANL, HKAL**	Not available
<b>CONNEX™-ST</b>	
CXSL 25K	Not available
<b>HT™ SERIES</b>	
HT250YB	Call for application approval
HT250T	Brake chambers in forward position only
HT230T, HT300T	ADB OK
HT250U, HT250UB	Call for application approval
HT190U, HT250US, HT300US	Not available
HT250Y, HT250YS, HT300YB	Not available
<b>TRLAXLE®</b>	
TRLAXLE — ½", ⅝", ⅝" HD wall	ADB available on limited tracks
TRLAXLE — ¾" wall	Not available
<b>TIREMAAX®</b>	
TIREMAAX CP, TIREMAAX PRO	ADB OK
* Not available with Hendrickson MAXX22T.	
** Not available with WABCO PAN19.	



### SUSPENSION AND AXLE SPECIFICATION REQUIREMENTS

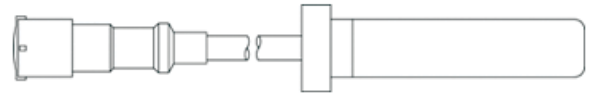
The chart below outlines the axle tracks available for suspension and axle systems equipped with ADBs.

MODELS	AXLE TRACK
VANTRAAX®	71.5", 77.5" and 83.5"
INTRAAX®	71.5", 73", 75.5", 76.5", 77.5", 83.5" and 85"
TRLAXLE®	
ULTRAA-K®	77.5"

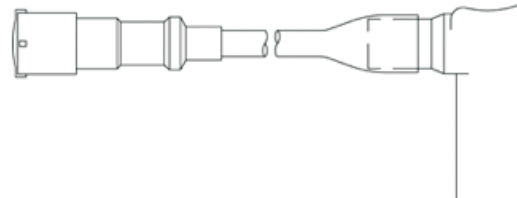
### ADDITIONAL COMPONENT REQUIREMENTS

Hendrickson requires all ADB equipped suspensions and axles to be fitted with dust shields and ABS sensors. Whereas ABS sensors for drum brakes are "right angle" 90-degree shaped, sensors for ADB are "straight" shaped. Depending on caliper brand, ABS sensing may be done by hub-mounted tone rings or rotor-mounted tone rings.

#### "Straight" ABS Sensor for ADB



#### 90-Degree ADB Sensor for Drum Brakes





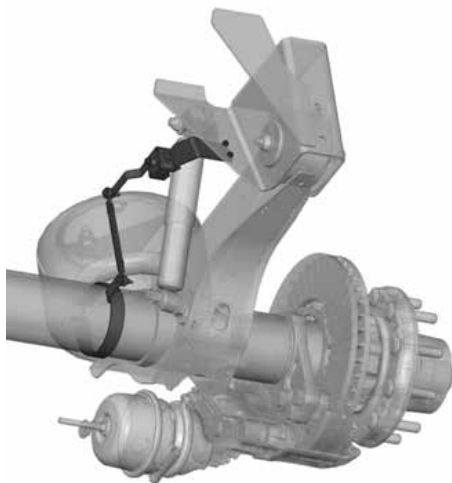
## HEIGHT CONTROL VALVE REQUIREMENTS

Some ADB-equipped suspensions require a unique height control valve (HCV) mounting kit. These HCV kits are unique because of the lower mount connection. On drum brakes, the HCV usually mounts to the brake chamber bracket. With ADB, there is no brake chamber bracket, so the HCV mounts to the axle using a band clamp arrangement. Suspension models that require a unique kit are referenced in the chart below.

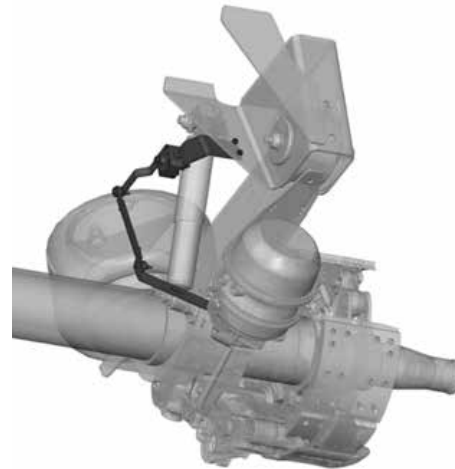
<b>INTRAAX®</b>
AANT 23K
AAT 23K/25K/30K
AANL 23K
AANLS 20K
<b>VANTRAAX®</b>
HKANT 23K/40K/46K
HKAT 50K
<b>INTRAAX®-SP</b>
AAZNT 23K/46K
Refer to Hendrickson literature number <i>L1024 - Height Control Valves</i> or <i>L1182 - Controls Parts Catalog</i> on the Hendrickson website for more information.

The following drawings show the difference between typical ADB suspension HCV mounting kits versus drum brake suspension HCV mounting kits.

### HCV Mounting for ADB



### Conventional HCV Mounting for Drum Brake



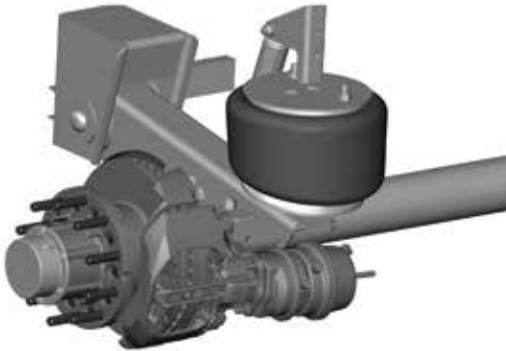
**NOTE:** Additional restrictions may apply; please contact Hendrickson Customer Service for assistance.



## TRLAXLE® NON-INTEGRATED AXLE BRAKE CALIPER POSITION

Brake caliper position is an important piece of information Hendrickson needs to fully configure an ADB-equipped non-integrated suspension or axle. Customers must select the brake caliper position as shown in the drawings below to ensure proper orientation of the brake chamber per the specification ordered by the end user.

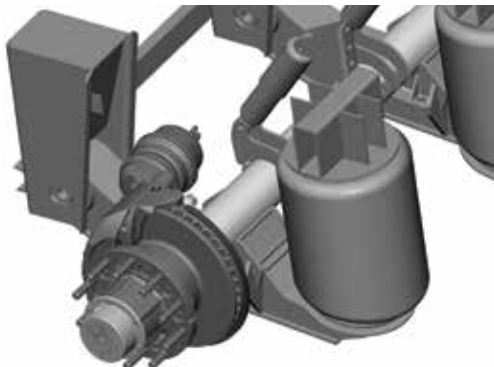
- A. For top-mount mechanical suspensions or top-mount air suspensions with brake chamber to the REAR of the axle.



- B. For top-mount air suspensions with brake chamber to the FRONT of the axle.



- C. For low-ride/underslung air suspensions with brake chamber to the FRONT of the axle.



These can also be found at the bottom of page 7 of L964 Hendrickson Trailer Axles Ordering Guide.

**⚠ CAUTION:** For underslung mechanical suspensions, call Hendrickson and the suspension supplier.

**✓ NOTE:** For all caliper positions shown, the tire inflation holes are located on top dead center of axle when suspension is at ride height. Customer should verify brake chamber clearance at the entire suspension travel range. On Figure C, the shock cannot be mounted in front of the axle on underslung suspensions due to interface with the brake chamber.

## WHEEL AND VALVE STEM

**⚠ WARNING:** Great care must be taken in selecting combinations of wheel and valve stem products that are compatible with ADB. Improper wheels or valve stems can interfere with air disc brakes and cause rapid tire deflation, component damage, a loss of vehicle control, **PROPERTY DAMAGE OR SEVERE PERSONAL INJURY**. Use only wheels and valve stems that provide proper running clearance with air disc brakes equipped on the suspension. Each brake manufacturer has compiled a list of approved wheel and valve stem combinations that can be selected during the approval process. If a wheel and valve stem combination is not available, please contact the brake manufacturer for approval. You may also contact the vehicle or brake manufacturer to determine replacement wheels and valve stems approved for the application.

## TRAILER BRAKE AIR LINE ROUTING

**⚠ WARNING:** Great care must be taken when installing brake chamber air lines. Brake air lines must be installed to **ENSURE FREE MOVEMENT** of the caliper over its entire stroke. Attach brake hose to the brake chamber according to chamber manufacturer's specifications.



## AIR DISC BRAKE WHEEL-END SYSTEM OPTIONS

Hendrickson offers ADB packages in combination with several wheel-end systems:

- Standard service wheel-end
- HXL Hendrickson Extended-Life wheel-end
- Conmet PreSet wheel-end

The specific options for each are shown in the Hendrickson ADB Options Matrix, listed below.

### HXL7® Hendrickson Extended-Life 7-Year System™

is an industry exclusive system that combines Hendrickson’s engineering and manufacturing expertise with high-performance wheel-end components to create a system that delivers reliability and performance mile after mile.

**HXL5® Hendrickson Extended-Life 5-Year System™** and **HXL3® Hendrickson Extended-Life 3-Year System™** are wheel-end packages, like HXL7, that offer the convenience of a single supplier for support and peace of mind from the most trusted name in the trailer industry.

### Conmet PreSet ADB Wheel-End Systems

Hendrickson offers the Conmet PreSet wheel-end system with two options:

1. PreSet Aluminum Hub
2. PreSet Ductile Iron Hub

The Aluminum PreSet hub is available on both WABCO PAN22-1 ADB and Knorr/Bendix ADB22X ADB packages. The ductile iron PreSet hub is only available on the Knorr/Bendix ADB22X package on an HP spindle.

For USA and Canada on-highway applications, the Conmet PreSet ADB wheel-end systems carry a limited five-year parts and one-year labor warranty on the hub, seal and bearings, excluding all normal wear. For areas outside the USA and Canada, Conmet PreSet ADB wheel-end systems carry a limited one-year parts and labor warranty on the hub, seal and bearings, excluding all normal wear. You may contact Conmet directly for ADB wheel-end warranty administration.

**HENDRICKSON ADB OPTIONS MATRIX**

ADB OFFERING	Hendrickson MAXX22T™ or Wabco PAN22-1, Knorr-Bendix ADB22X or WABCO PAN19**				ADB22X		ADB22X or PAN22-1
	Standard 1 Year*	HXL3®	HXL5®	HXL7®	Conmet PreSet		
<b>On-Highway</b>	1 Year	3 Year	5 Year	7 Year	5 Year Limited		
<b>Off-Road</b>	1 Year	1 Year	3 Year	3 Year			
<b>Rotor Type</b>	U-Shape Cast Iron				U-Shape Cast Iron	Splined	Flat Cast Iron
<b>Hub Material</b>	Ductile Iron or Dura-Light Hub®				Ductile Iron	AL Splined	AL
<b>Spindle Type</b>	HN or HP			HP	HP	HN or HP	HN or HP
<b>Lube Type</b>	SAE 80/90 Synthetic 75W/90 Semi-Fluid Grease	SAE 80/90 or 75W/90	Semi-Fluid Grease		Synthetic 75W/90 or Semi-Fluid Grease		
<b>Spindle Nut</b>	3 Piece Nut	PRECISION240® or PRECISION320®			3 Piece Nut		
<b>Options</b>	TIREMAAX® CP or TIREMAAX PRO						
* Hendrickson offers a minimum one-year, standard service wheel-end system on all ADB packages.							
** WABCO PAN19 is not available with HXL7® wheel-end package.							
NOTE: All long-life packages do not include wearable items such as rotors and brake pads. If service to these items is necessary within the warranty period and would require removal of the hub cap (i.e. rotor replacement), Hendrickson must be notified prior to initiation of the service. If service is performed to Hendrickson’s specifications, Hendrickson will continue to warrant the system for the remainder of the original warranty period.							





## AIR DISC BRAKE WARRANTY

Hendrickson MAXX22T™ air disc brake packages installed by Hendrickson will carry a limited five-year parts and one-year labor warranty, excluding all normal wear. Other air disc brake packages installed by Hendrickson will carry a limited one-year parts and labor warranty, excluding all normal wear.

The wheel-end warranties for ADB cover the hub seal, bearings and hubcaps.

For complete information on Hendrickson warranty policies, refer to literature number, *L583 – Hendrickson Comprehensive Warranty Statement* available online at [www.hendrickson-intl.com](http://www.hendrickson-intl.com).

**NOTE:** Warranty coverage from our air disc brake suppliers is subject to change without notice. Always contact the air disc brake supplier for the most current warranty information and specific details regarding coverage of air disc brake parts.

## AIR DISC BRAKE PACKAGE WEIGHTS COMPARED TO DRUM BRAKES

ADB package weights have closed the gap on drum brake package weights. The following tables show how several Hendrickson ADB packages compare to 16.5" x 7" and 16.5" x 8-5/8" drum brake packages. The results are listed as the difference in weight (lbs./axle).

As shown with an AANT integrated suspension system, several ADB packages are lighter than drum brakes. The lightest ADB package using Dura-Light hubs/cast rotors is nearly identical (2 lbs/axle) to the lightest 16.5" x 7" drum brake with Dura-Light hubs and Stemco CentriFuse brake drums. This analysis assumes 10-stud, 11.25" BC hubs using long studs for aluminum wheels.

## CLOSING

ADB is an evolving technology for the NAFTA market and changes are occurring rapidly. As new developments arise, Hendrickson will continue to provide updated information.

For questions regarding air disc brake packages at Hendrickson, please notify your trailer account manager or call 1-866-RIDE-AIR (866-743-3247) and ask to speak with a customer or technical service representative.

INTRAAX® AIR DISC BRAKES vs. DRUM BRAKE WEIGHT COMPARISONS – AANT							
Option	Hendrickson MAXX22T™		Wabco PAN 22-1		Bendix ADB22X™		
	Standard	Lightweight	Standard	Lightweight	Standard	Lightweight	
Rotor Style	U-Shape	U-Shape	U-Shape	Flat	U-Shape	Flat	Splined
Hub Material	DI	Dura-Light	DI	AL	DI	AL	
Hub Brand	Hendrickson	Walther	Hendrickson	Conmet PreSet	Conmet	Conmet PreSet	
Seal	Federal Mogul Gold Seal			Conmet Seal	FM Seal	Conmet Seal	
Bearings	Standard Bearings			Conmet Bearings	Standard Bearings	Conmet Bearings	
Weight Comparison*							
16.5" x 7" Ductile Iron	<b>(50)</b>	<b>(70)</b>	12	<b>(30)</b>	<b>(4)</b>	<b>(40)</b>	<b>(56)</b>
16.5" x 7" Dura-Light	18	<b>(2)</b>	80	38	64	28	12
16.5" x 7" Aluminum	14	<b>(6)</b>	76	34	60	24	8
16.5" x 8 <sup>5</sup> / <sub>8</sub> " Ductile Iron	<b>(84)</b>	<b>(104)</b>	<b>(22)</b>	<b>(64)</b>	<b>(38)</b>	<b>(74)</b>	<b>(90)</b>
16.5" x 8 <sup>5</sup> / <sub>8</sub> " Light wt	<b>(22)</b>	<b>(42)</b>	40	<b>(2)</b>	23	<b>(12)</b>	<b>(28)</b>
<b>(BOLD)</b> indicates the ADB package is lighter than the drum brake.							
* Actual weights may vary depending on suspension selection specification.							

NOTE: Due to configurations that are required to package air disc brakes on AANL suspensions, such as rear mounted shocks, the weight savings for AANL air disc brakes are not as significant as on other suspension types. Estimated weight differences for AANL drum and disc suspensions are show in the table on page 10.



INTRAAX® AIR DISC BRAKES vs. DRUM BRAKE WEIGHT COMPARISONS – AANL							
Option	Hendrickson MAXX22T™		Wabco PAN 22-1		Bendix ADB22X™		
	Standard	Lightweight	Standard	Lightweight	Standard	Lightweight	
Rotor Style	U-Shape	U-Shape	U-Shape	Flat	U-Shape	Flat	Splined
Hub Material	DI	Dura-Light	DI	AL	DI	AL	
Hub Brand	Hendrickson	Walther	Hendrickson	Conmet PreSet	Conmet	Conmet PreSet	
Seal	Federal Mogul Gold Seal			Conmet Seal	FM Seal	Conmet Seal	
Bearings	Standard Bearings			Conmet Bearings	Standard Bearings	Conmet Bearings	
Weight Comparison*							
16.5" × 7" Ductile Iron	<b>(5)</b>	<b>(25)</b>	57	15	41	5	<b>(11)</b>
16.5" × 7" Dura-Light	63	43	125	83	109	73	57
16.5" × 7" Aluminum	59	39	121	79	105	69	52
16.5" × 8 <sup>5</sup> / <sub>8</sub> " Ductile Iron	<b>(39)</b>	<b>(59)</b>	23	<b>(19)</b>	7	<b>(29)</b>	<b>(45)</b>
16.5" × 8 <sup>5</sup> / <sub>8</sub> " Light wt	23	3	85	43	69	33	17
<b>(BOLD)</b> indicates the ADB package is lighter than the drum brake.							
* Actual weights may vary depending on suspension selection specification.							



Call Hendrickson at **330.489.0045** or **866.RIDEAIR (743.3247)** for additional information.



[www.hendrickson-intl.com](http://www.hendrickson-intl.com)

**TRAILER COMMERCIAL VEHICLE SYSTEMS**

2070 Industrial Place SE  
Canton, OH 44707-2641 USA  
866.RIDEAIR (743.3247)  
330.489.0045 • Fax 800.696.4416

**Hendrickson Canada**

250 Chrysler Drive, Unit #3  
Brampton, ON Canada L6S 6B6  
800.668.5360  
905.789.1030 • Fax 905.789.1033

**Hendrickson Mexicana**

Circuito El Marqués Sur #29  
Parque Industrial El Marqués  
Pob. El Colorado, Municipio El Marqués,  
Querétaro, México C.P. 76246  
+52 (442) 296.3600 • Fax +52 (442) 296.3601